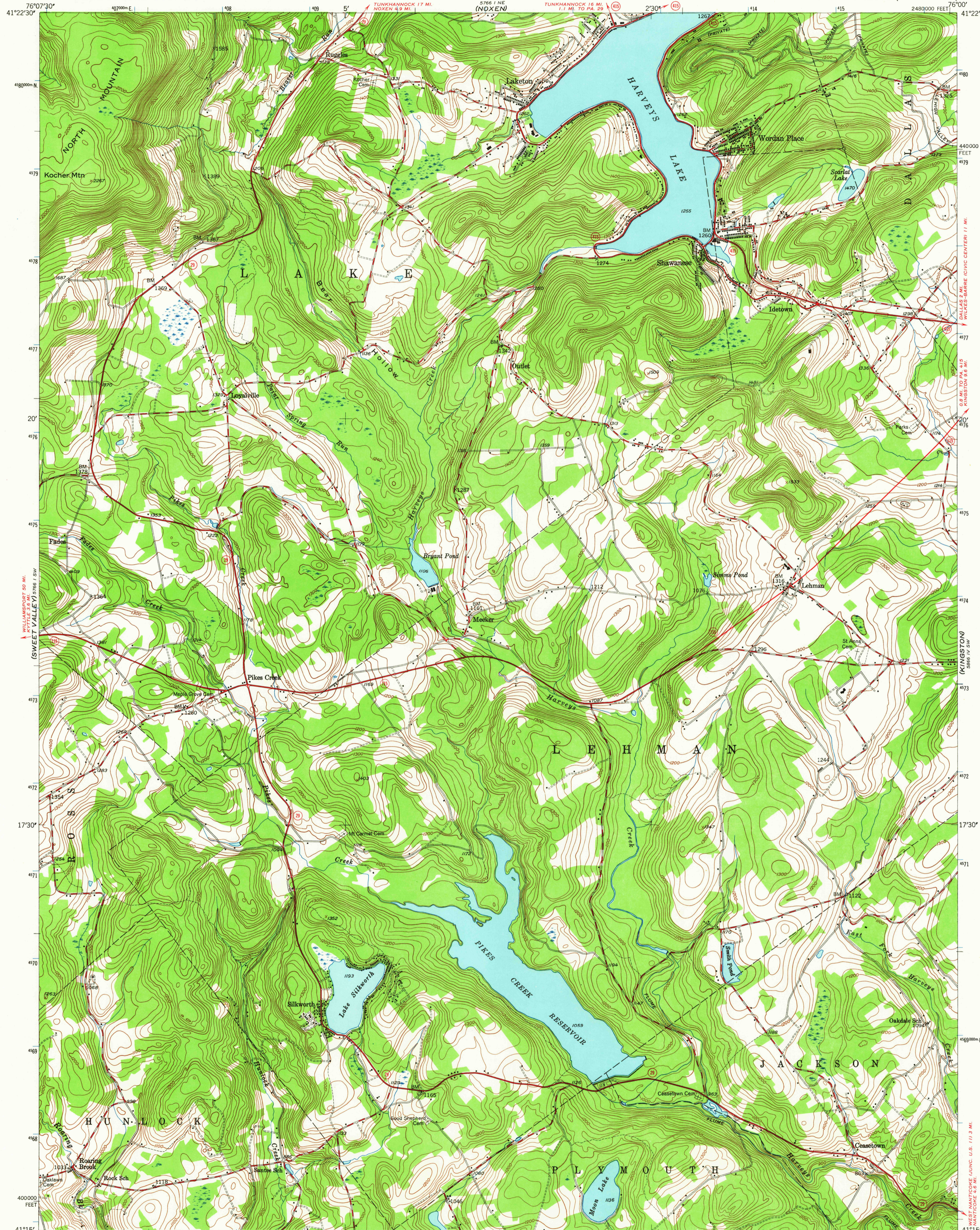
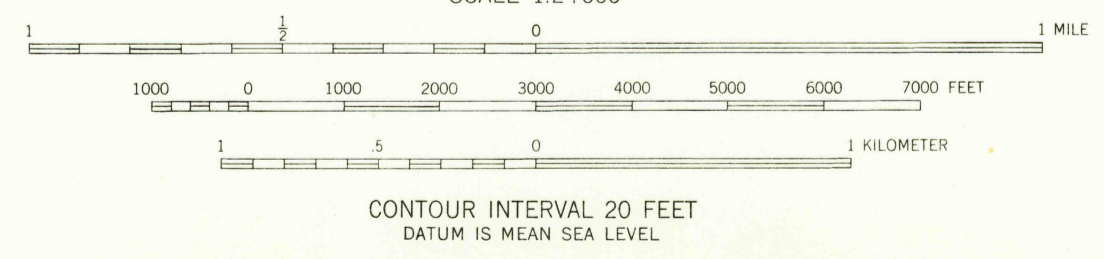
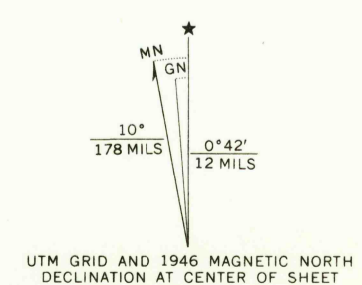


UNITED STATES
DEPARTMENT OF THE INTERIOR
GEOLOGICAL SURVEY

HARVEYS LAKE QUADRANGLE
PENNSYLVANIA—LUZERNE CO.
7.5 MINUTE SERIES (TOPOGRAPHIC)



Mapped, edited, and published by the Geological Survey
Control by USGS and USC&GS
Topography from aerial photographs by multiplex methods
Aerial photographs taken 1942. Field check 1946
Polyconic projection. 1927 North American datum
10,000-foot grid based on Pennsylvania coordinate system,
north zone
1000-meter Universal Transverse Mercator grid ticks,
zone 18, shown in blue



USGS
Historical File
Topographic Division

ROAD CLASSIFICATION

Heavy-duty	Light-duty
Medium-duty	Unimproved dirt
	State Route



U.S.G.S.
FILE COPY
TOPOGRAPHIC DIVISION
HARVEYS LAKE, PA.
N4115—W7600/7.5
1946
AMS 5766 I SE—SERIES V831

THIS MAP COMPLIES WITH NATIONAL MAP ACCURACY STANDARDS
FOR SALE BY U.S. GEOLOGICAL SURVEY, WASHINGTON, D.C. 20242
A FOLDER DESCRIBING TOPOGRAPHIC MAPS AND SYMBOLS IS AVAILABLE ON REQUEST

5861 N.W. (DUTCH MOUNTAIN)

5861 N.W. (CENTER MORELAND)

5861 N.W. (SHICKSHINNY)

5861 N.W. (WILKES-BARRE WEST)

6385
APR 12 1956