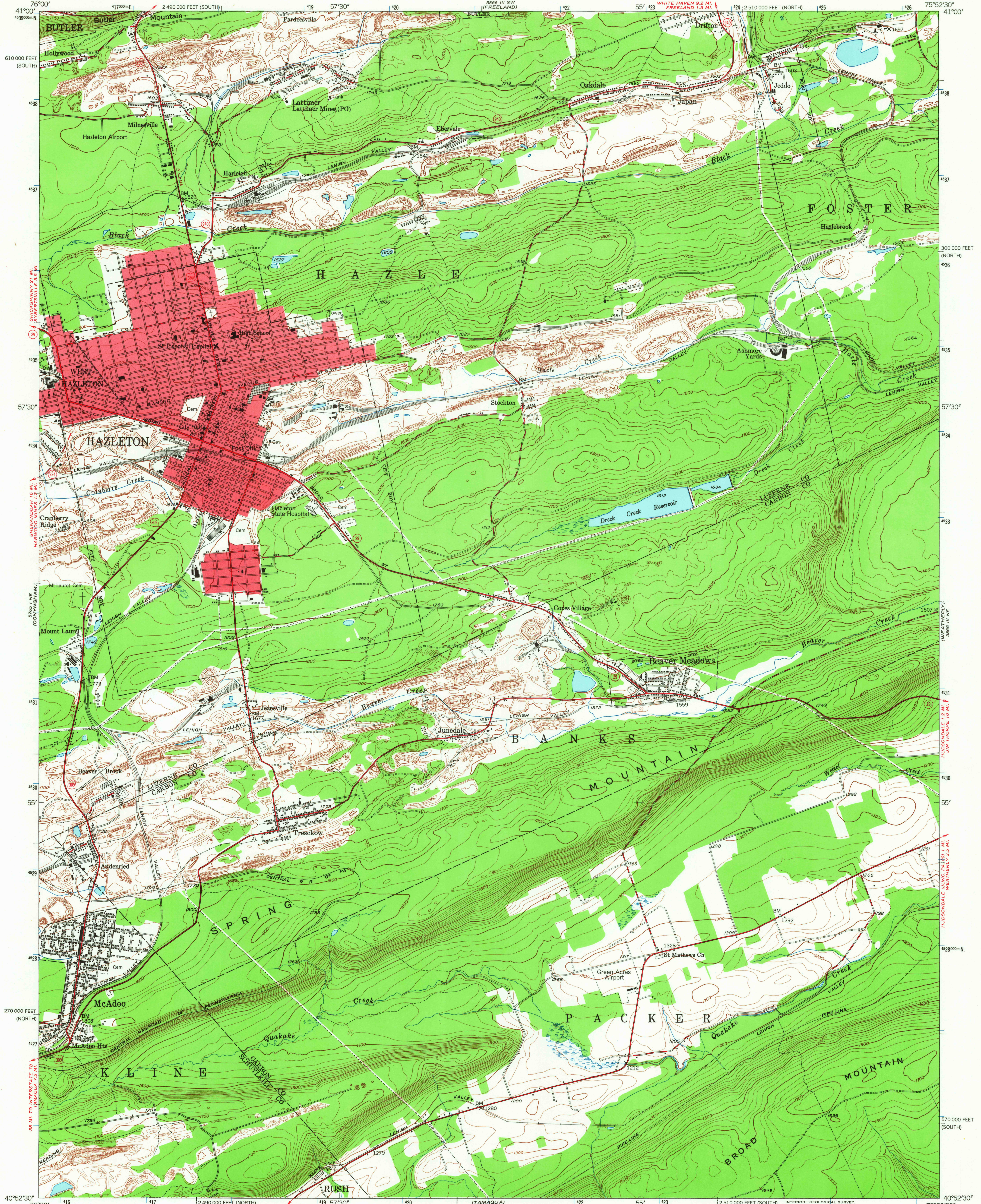
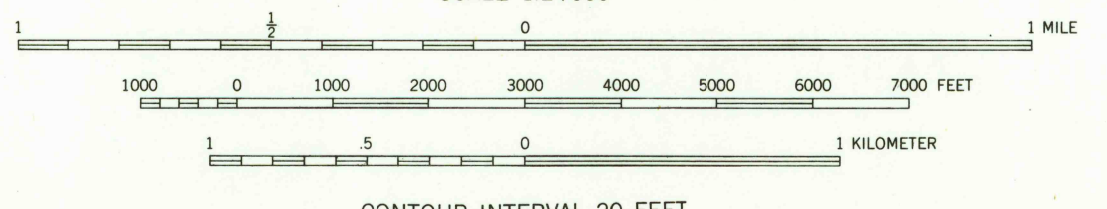
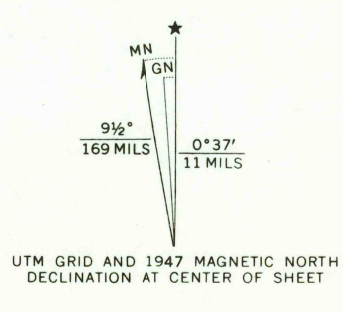


UNITED STATES DEPARTMENT OF THE INTERIOR  
GEOLOGICAL SURVEY

HAZLETON QUADRANGLE  
PENNSYLVANIA  
7.5 MINUTE SERIES (TOPOGRAPHIC)  
NW 1/4 HAZLETON 15' QUADRANGLE



Mapped, edited, and published by the Geological Survey  
Control by USGS, USC&GS, and  
Pennsylvania Department of Highways  
Topography from aerial photographs by multiple methods  
Aerial photographs taken 1942. Field check 1947  
Polyconic projection, 1927 North American datum  
10,000-foot grids based on Pennsylvania coordinate system,  
north and south zones  
Red tint indicates area in which only  
landmark buildings are shown  
Contours in strip mine and mine dump areas  
compiled from 1942 photography  
1000-meter Universal Transverse Mercator grid ticks,  
zone 18, shown in blue



USGS  
Historical File  
Topographic Division  
U.S.G.S.  
PENNSYLVANIA  
FILE COPY  
TOPOGRAPHIC DIVISION

ROAD CLASSIFICATION  
Heavy-duty ——— Light-duty ———  
Medium-duty ——— Unimproved dirt ———  
U.S. Route ——— State Route ———

HAZLETON, PA.  
NW 1/4 HAZLETON 15' QUADRANGLE  
N4052.5-W7552.5/7.5  
1947  
AMS 5865 IV NW-SERIES V831

THIS MAP COMPLIES WITH NATIONAL MAP ACCURACY STANDARDS  
FOR SALE BY U.S. GEOLOGICAL SURVEY, WASHINGTON, D. C. 20242  
A FOLDER DESCRIBING TOPOGRAPHIC MAPS AND SYMBOLS IS AVAILABLE ON REQUEST