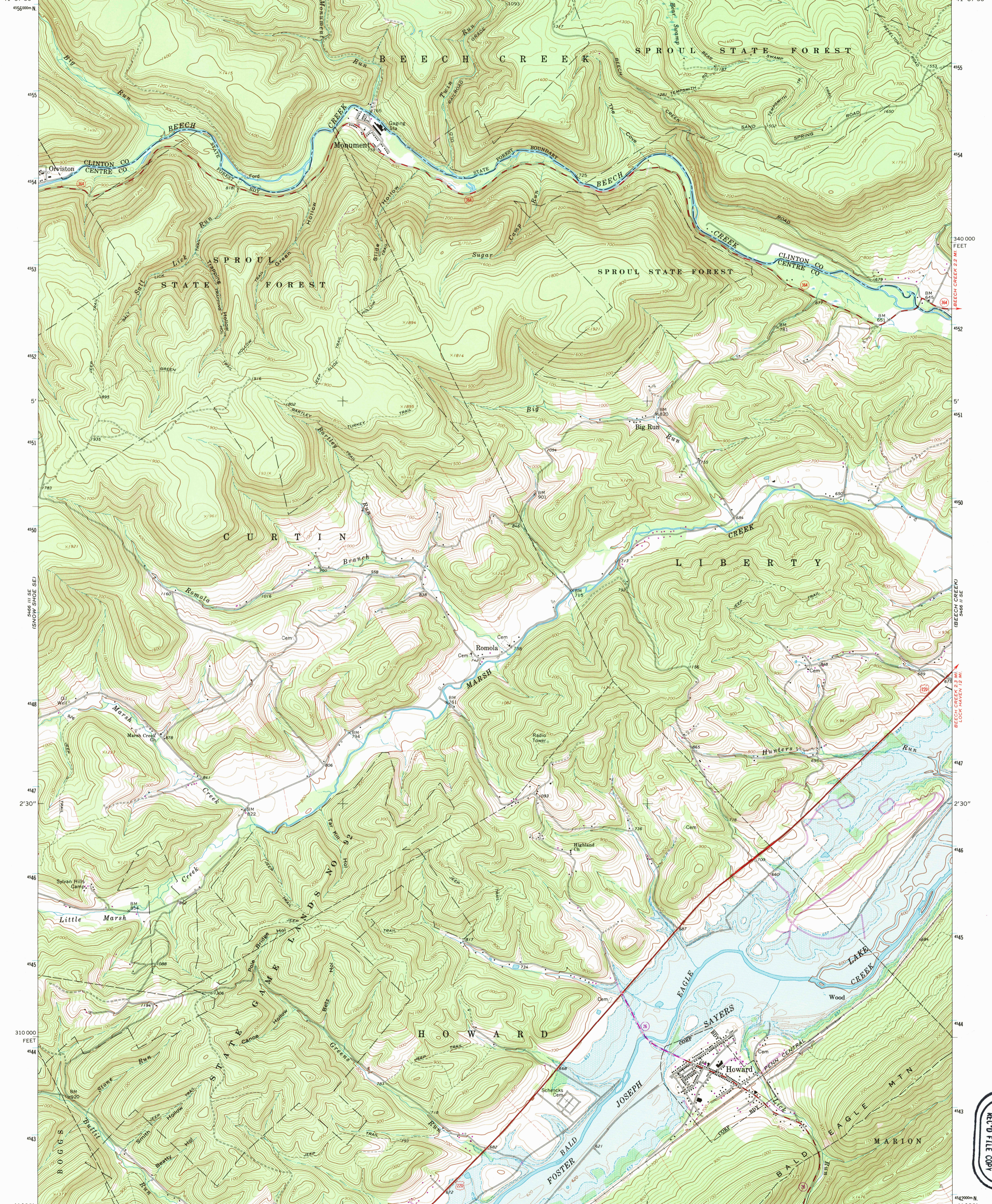
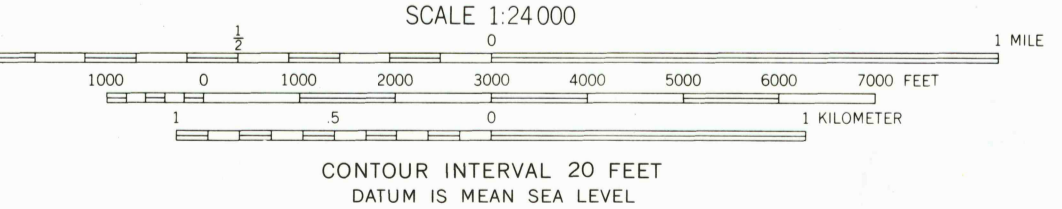
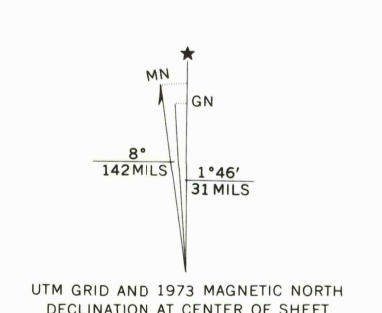


77° 45' 77° 42' 30" 77° 40' 77° 37' 30" 2 030 000 FEET 2 79

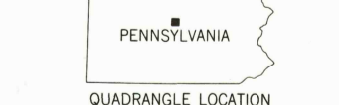


Mapped, edited, and published by the Geological Survey
Control by USGS and USC&GS
Topography by photogrammetric methods from aerial photographs
taken 1966. Field checked 1967
Polyconic projection. 1927 North American datum
10,000-foot grid based on Pennsylvania coordinate system, north zone
1000-meter Universal Transverse Mercator grid ticks,
zone 18, shown in blue
Fine red dashed lines indicate selected fence and field lines where
generally visible on aerial photographs. This information is unchecked
Blue hatching indicates areas to be submerged by Sayers Lake
at elevation 630 feet. Areas covered by dashed light-blue pattern
are subject to controlled inundation



ROAD CLASSIFICATION

Primary highway, all weather, hard surface	Light-duty road, all weather, improved surface
Secondary highway, all weather, hard surface	Unimproved road, fair or dry weather
U.S. Route	State Route



HOWARD, PA.
N4100—W7737.5/7.5
1967
PHOTOREVISED 1973
AMS 5466 II SW—SERIES V831

THIS MAP COMPLIES WITH NATIONAL MAP ACCURACY STANDARDS
FOR SALE BY U.S. GEOLOGICAL SURVEY, WASHINGTON, D.C. 20242
A FOLDER DESCRIBING TOPOGRAPHIC MAPS AND SYMBOLS IS AVAILABLE ON REQUEST

Revisions shown in purple compiled in cooperation with
State of Pennsylvania agencies from aerial photographs
taken 1973. This information not field checked

USGS AND HISTORICAL
MAP ARCHIVES
REC'D FILE COPY
JUL 21 1995

