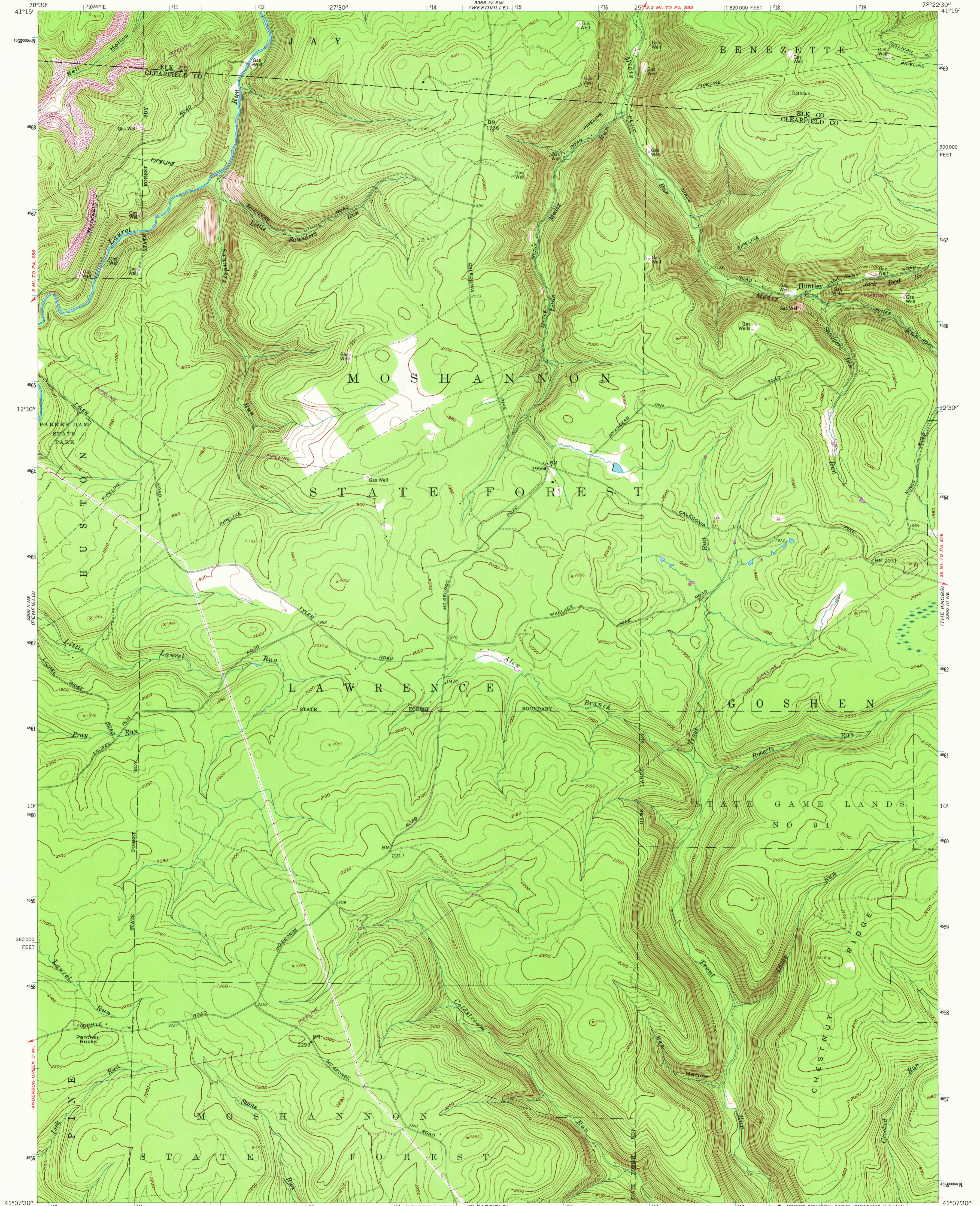
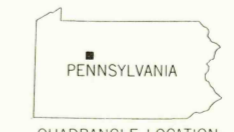
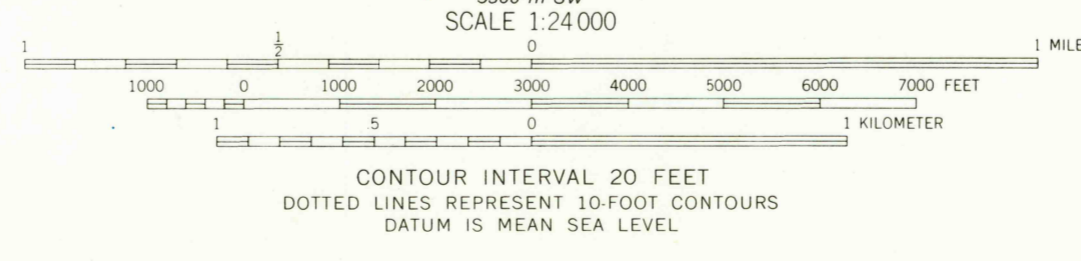
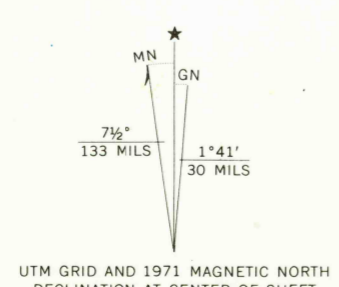


5366 III SW
(WEEDVILLE)

5366 III NE
(DEWIS RUN)



Mapped, edited, and published by the Geological Survey
Control by USGS and USC&GS
Topography from aerial photographs by photogrammetric methods
Aerial photographs taken 1958. Field check 1959
Polyconic projection. 1927 North American datum
10,000-foot grid based on Pennsylvania coordinate system, north zone
100-meter Universal Transverse Mercator grid ticks,
zone 17, shown in blue
Unchecked elevations are shown in brown
Revisions shown in purple compiled in cooperation with
State of Pennsylvania agencies from aerial photographs
taken 1971. This information not field checked



THIS MAP COMPLIES WITH NATIONAL MAP ACCURACY STANDARDS
FOR SALE BY U.S. GEOLOGICAL SURVEY, WASHINGTON, D. C. 20242
A FOLDER DESCRIBING TOPOGRAPHIC MAPS AND SYMBOLS IS AVAILABLE ON REQUEST

HUNTLEY, PA.
N4107.5-W7822.5/7.5
1959
PHOTOREVISED 1971
AMS 5366 III NW-SERIES V831

SEP 20 1972
2940
USGS
HISTORICAL FILE
TOPOGRAPHIC DIVISION