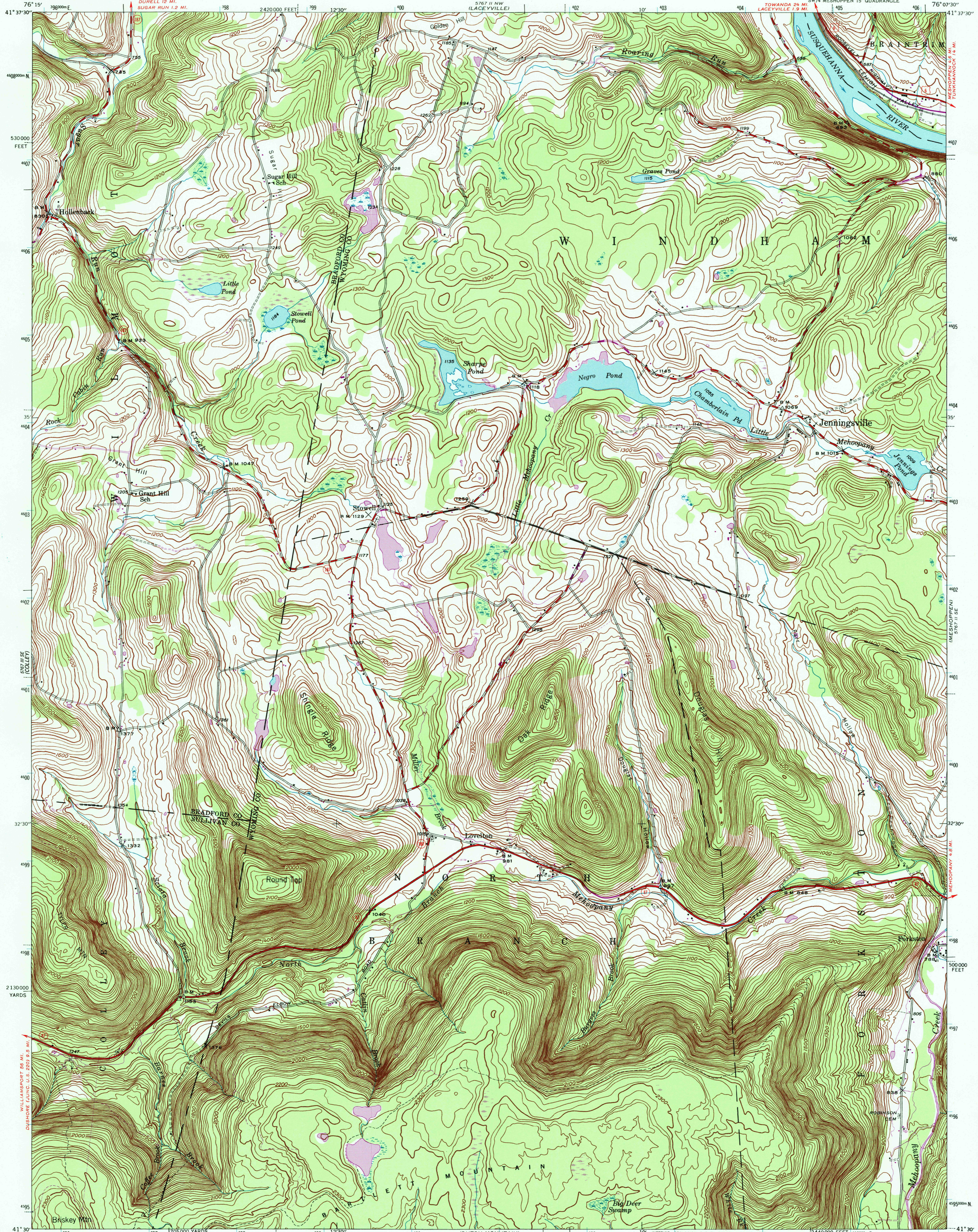


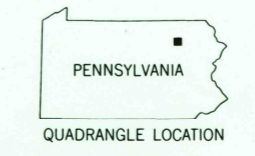
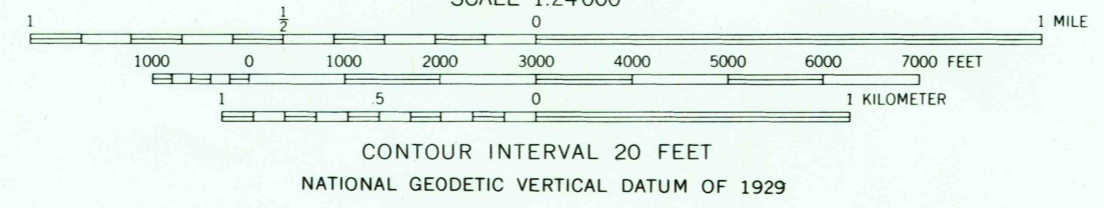
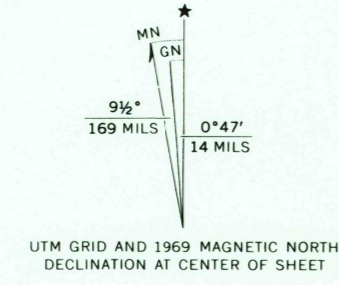
UNITED STATES
DEPARTMENT OF THE INTERIOR
GEOLOGICAL SURVEY

PENNSYLVANIA
JENNINGSVILLE QUADRANGLE
7 1/2-MINUTE SERIES
SW 1/4 MESHOPPEN 15' QUADRANGLE



Mapped by the Geological Survey
1945

Revisions shown in purple compiled in cooperation with
State of Pennsylvania agencies from aerial photographs taken 1969.
This information not field checked.



Polycyclic projection. 1927 North American datum
5000 yard grid based on U. S. zone system, A
10000 foot grid based on Pennsylvania (North)
rectangular coordinate system
1000-meter Universal Transverse Mercator grid ticks,
zone 18, shown in blue

JENNINGSVILLE, PA.
SW 1/4 MESHOPPEN 15' QUADRANGLE
N4130—W7607.5/7.5

- ROAD CLASSIFICATION**
- Heavy-duty ——— 2 LANE 6 LANE Light-duty ———
 - Medium-duty ——— 2 LANE 6 LANE Unimproved dirt ———
 - U. S. Route (square symbol) State Route (circle symbol)

1945
PHOTOREVISED 1969
AMS 5767 II SW—SERIES V831

FOR SALE BY U. S. GEOLOGICAL SURVEY, RESTON, VIRGINIA 22092
A FOLDER DESCRIBING TOPOGRAPHIC MAPS AND SYMBOLS IS AVAILABLE ON REQUEST

RECEIVED
JUL 31 1999
USGS NND
HISTORICAL MAP ARCHIVES

