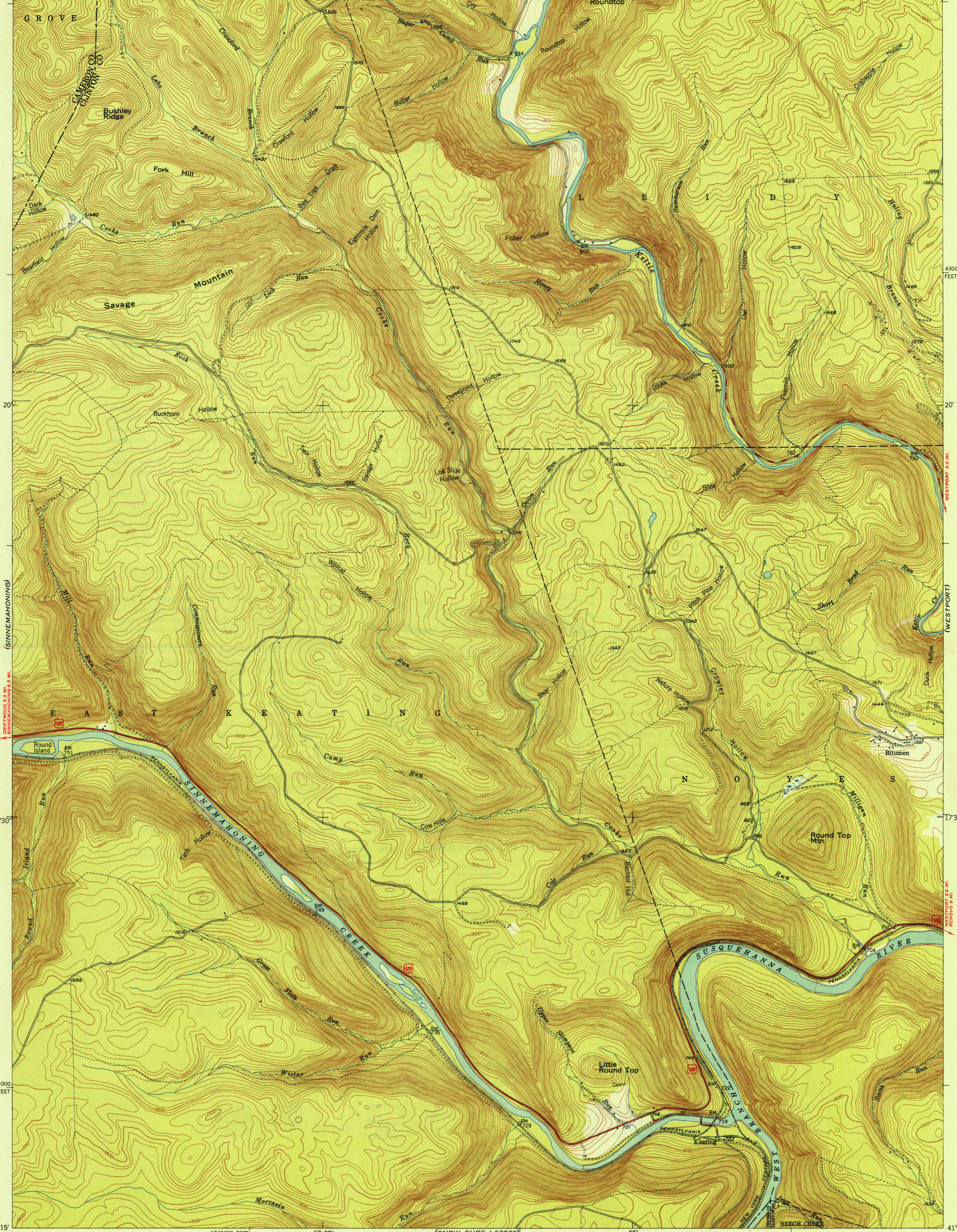


(FIRST FORK)

(TAMARACK)

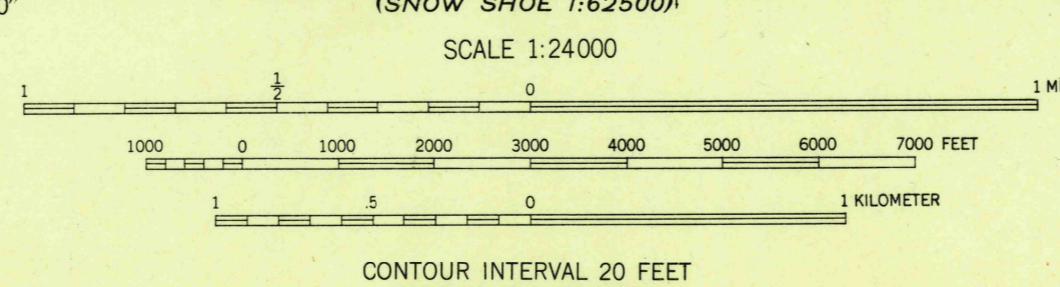
78°00' 57°30' 55' 77°52'30' 41°22'30'



U.S.G.S.
FILE COPY
Inspection and Editing

U.S.G.S.
FILE COPY
Inspection and Editing

Mapped, edited, and published by the Geological Survey
Control by USGS and USC&GS
Topography from aerial photographs by multiplex methods
Aerial photographs taken 1944. Field check, 1946
Polyconic projection. 1927 North American datum
10 000-foot grid based on Pennsylvania coordinate system,
north zone



USGS
HISTORICAL FILE
TOPOGRAPHIC DIVISION

ROAD CLASSIFICATION
HARD-SURFACE ALL WEATHER ROADS DRY WEATHER ROADS
Heavy-duty 4 LANE ROAD Improved dirt
Medium-duty 4 LANE ROAD Unimproved dirt
Loose-surface, graded, or narrow hard-surface
U.S. Route State Route

U.S.G.S.
FILE COPY
Inspection and Editing

KEATING, PA.
N4115-W7752.5/7.5

PRINTED 1948
DEC 23 1948

THIS MAP COMPLIES WITH NATIONAL MAP ACCURACY STANDARDS
FOR SALE BY U. S. GEOLOGICAL SURVEY, WASHINGTON 25, D. C.

3190