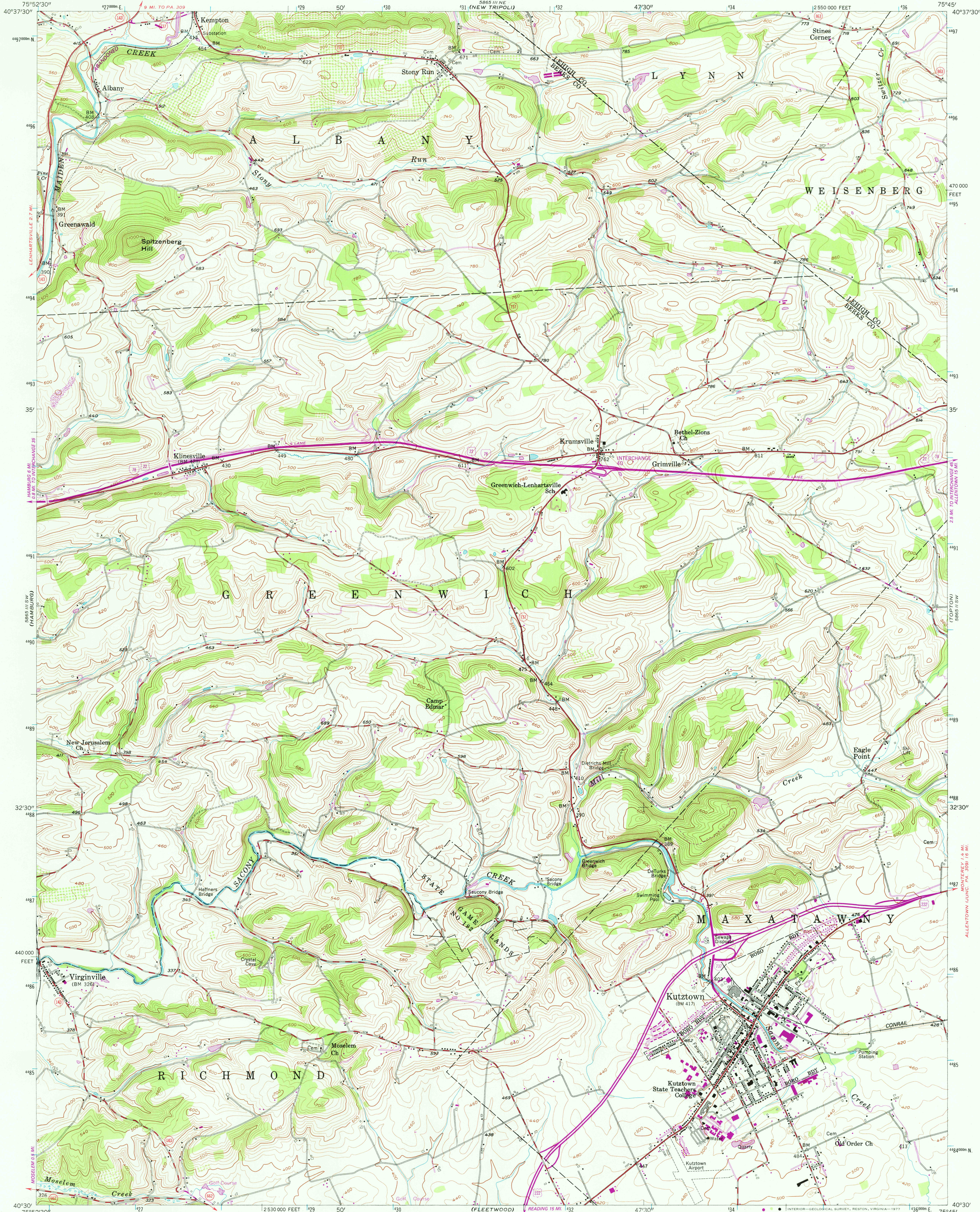


UNITED STATES  
DEPARTMENT OF THE INTERIOR  
GEOLOGICAL SURVEY

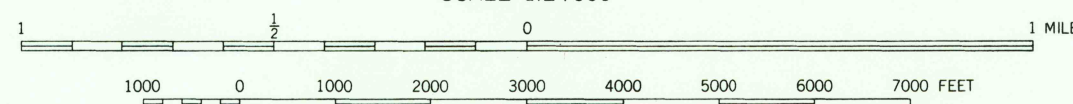
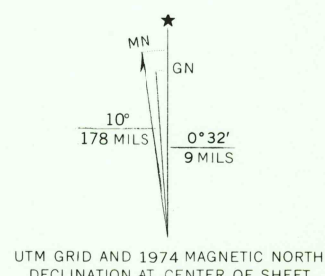
KUTZTOWN QUADRANGLE  
PENNSYLVANIA  
7.5 MINUTE SERIES (TOPOGRAPHIC)  
SE/4 HAMBURG 15' QUADRANGLE



Mapped, edited, and published by the Geological Survey  
Control by USGS and USC&GS

Topography from aerial photographs by multiplex methods  
Aerial photographs taken 1951. Field check 1956  
Polyconic projection. 1927 North American datum  
10,000-foot grid based on Pennsylvania coordinate system,  
south zone  
1000-meter Universal Transverse Mercator grid ticks,  
zone 18, shown in blue

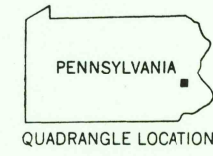
Revisions shown in purple compiled in cooperation with  
State of Pennsylvania agencies from aerial photographs  
taken 1969 and 1974. This information not field checked



CONTOUR INTERVAL 20 FEET  
NATIONAL GEODETIC VERTICAL DATUM OF 1929

THIS MAP COMPLIES WITH NATIONAL MAP ACCURACY STANDARDS  
FOR SALE BY U.S. GEOLOGICAL SURVEY, RESTON, VIRGINIA 22092  
A FOLDER DESCRIBING TOPOGRAPHIC MAPS AND SYMBOLS IS AVAILABLE ON REQUEST

ROAD CLASSIFICATION  
Heavy-duty ——— Light-duty ———  
Medium-duty ——— Unimproved dirt ———  
U.S. Route ——— State Route ———  
Interstate Route ———



USGS  
Historical File  
Topographic Division

KUTZTOWN, PA.  
SE/4 HAMBURG 15' QUADRANGLE  
N4030-W7545/7.5

1956  
PHOTOREVISED 1989 AND 1974  
AMS 5865 III SE-SERIES V831

FEB 17 1978  
3800