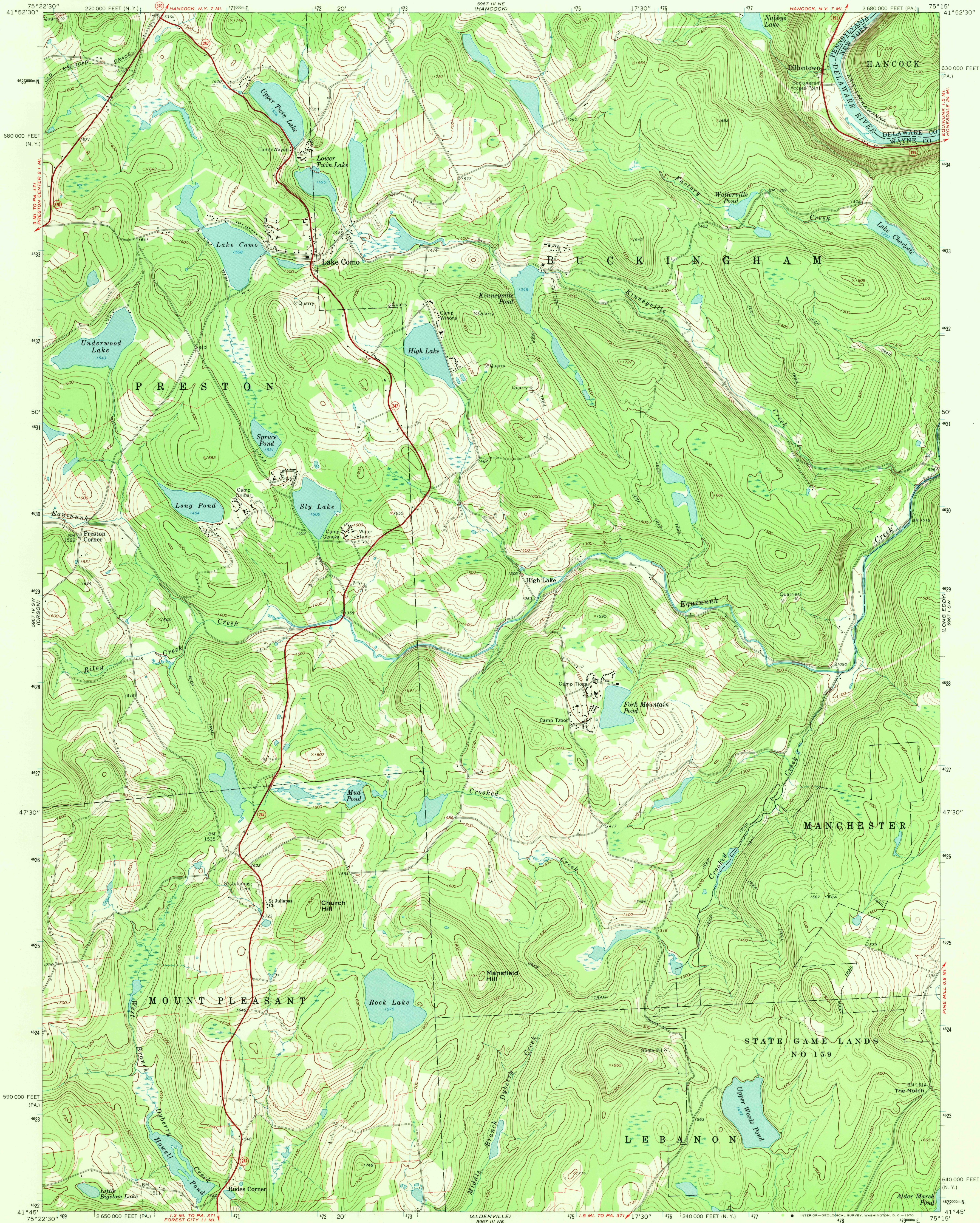
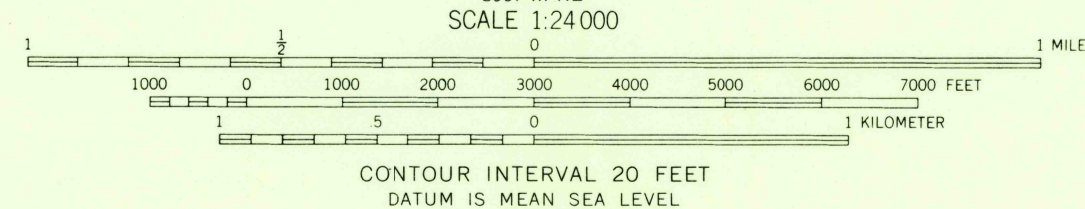


UNITED STATES
DEPARTMENT OF THE INTERIOR
GEOLOGICAL SURVEY

LAKE COMO QUADRANGLE
PENNSYLVANIA-NEW YORK
7.5 MINUTE SERIES (TOPOGRAPHIC)
SE/4 STARRUCCA 15' QUADRANGLE



Mapped, edited, and published by the Geological Survey
Control by USGS and USC&GS
Topography by photogrammetric methods from aerial
photographs taken 1966. Field checked 1968
Polyconic projection, 1927 North American datum
10,000-foot grids based on Pennsylvania coordinate system, north zone,
and New York coordinate system, east zone
1000-meter Universal Transverse Mercator grid ticks,
zone 18, shown in blue
Fine red dashed lines indicate selected fence and field lines where
generally visible on aerial photographs. This information is unchecked



ROAD CLASSIFICATION
Primary highway, all weather, hard surface
Light-duty road, all weather, improved surface
Unimproved road, fair or dry weather
State Route
State Game Lands No. 159
Lake Como, Pa. - N. Y.
SE/4 STARRUCCA 15' QUADRANGLE
N4145-W7515/7.5
1968
AMS 5967 IV SE-SERIES V831

THIS MAP COMPLIES WITH NATIONAL MAP ACCURACY STANDARDS
FOR SALE BY U. S. GEOLOGICAL SURVEY, WASHINGTON, D. C. 20242
A FOLDER DESCRIBING TOPOGRAPHIC MAPS AND SYMBOLS IS AVAILABLE ON REQUEST

3585
DEC 11 1970