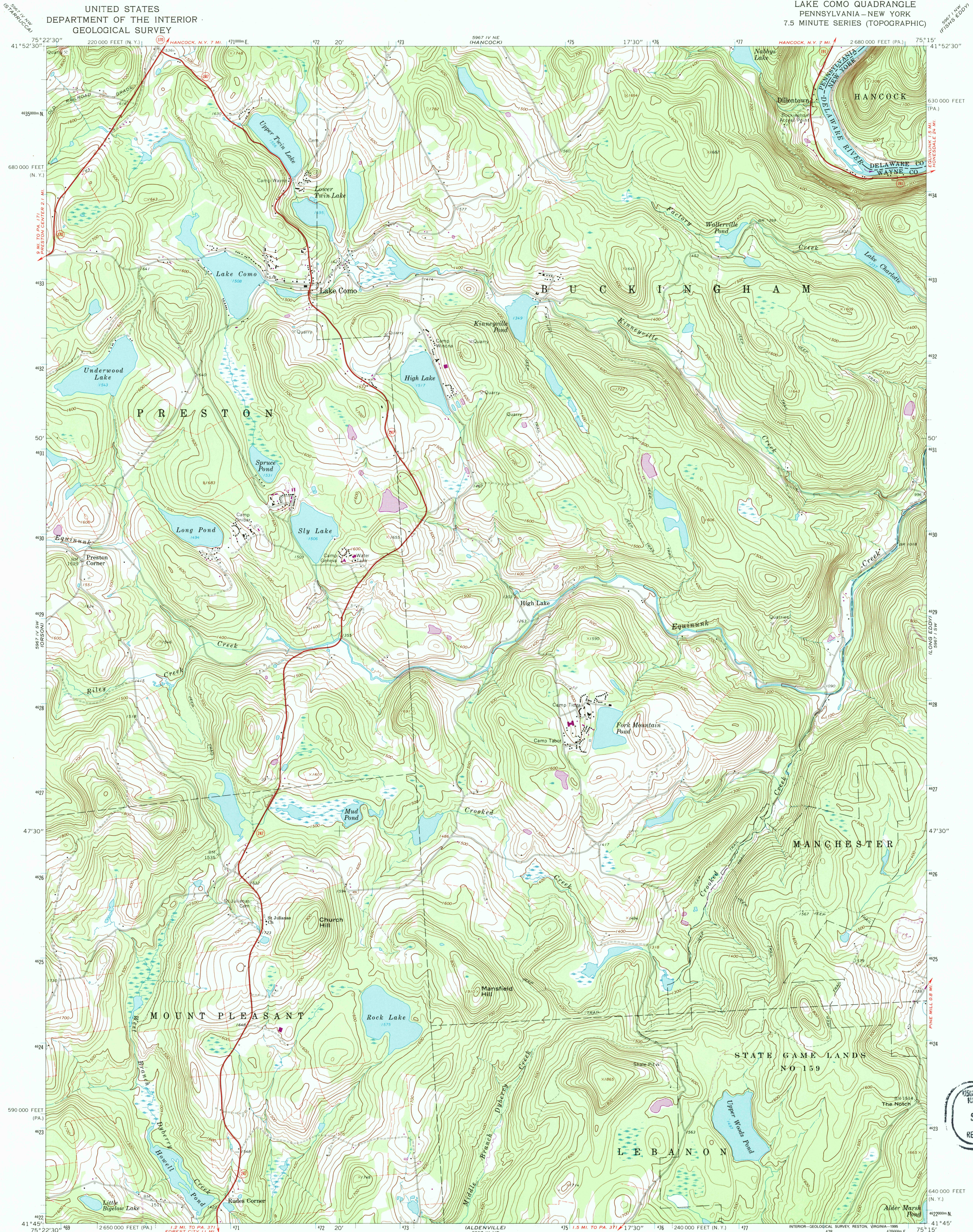
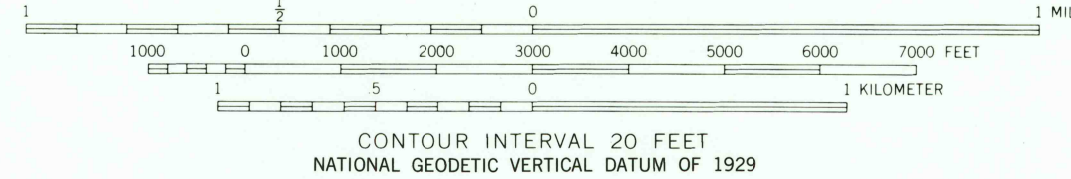
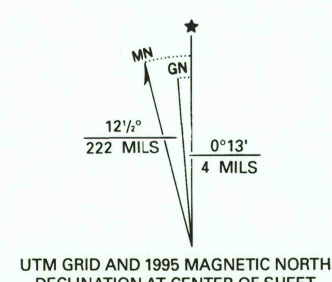


UNITED STATES  
DEPARTMENT OF THE INTERIOR  
GEOLOGICAL SURVEY

LAKE COMO QUADRANGLE  
PENNSYLVANIA-NEW YORK  
7.5 MINUTE SERIES (TOPOGRAPHIC)

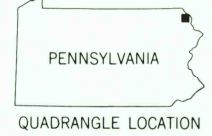


Produced by the U. S. Geological Survey  
Compiled by photogrammetric methods from imagery dated 1966  
Field checked 1968  
Photospected using imagery dated 1992, no major culture or drainage  
changes observed. Boundaries and names revised 1995  
North American Datum of 1927 (NAD 27)  
Projection: Pennsylvania coordinate system, north zone  
(Lambert conformal conic)  
10 000-foot ticks: Pennsylvania coordinate system, north zone and  
New York coordinate system, east zone  
Blue 1000-meter Universal Transverse Mercator grid ticks, zone 18  
North American Datum of 1983 (NAD 83) is shown by dashed  
corner ticks. The values of the shift between NAD 27 and NAD 83  
for 7.5-minute intersections are obtainable from National Geodetic  
Survey NADCON software  
There may be private inholdings within the boundaries of  
the National or State reservations shown on this map



THIS MAP COMPLIES WITH NATIONAL MAP ACCURACY STANDARDS  
FOR SALE BY U.S. GEOLOGICAL SURVEY  
DENVER, COLORADO 80225, OR RESTON, VIRGINIA 22092  
A FOLDER DESCRIBING TOPOGRAPHIC MAPS AND SYMBOLS IS AVAILABLE ON REQUEST

Revisions shown in purple compiled in cooperation with  
Commonwealth of Pennsylvania agencies from imagery  
dated 1976. This information not field checked  
Map edited 1978



ROAD CLASSIFICATION  
Primary highway, all weather, Light-duty road, all weather,  
hard surface improved surface  
Unimproved road, fair or dry  
weather  
State Route

LAKE COMO, PA-NY  
41075-G3-TF-024

1992

DMA 5967 IV SE-SERIES V831

USGS 1992 HISTORICAL  
MAP ARCHIVES  
SEP 06 1995  
REC'D FILE COPY

