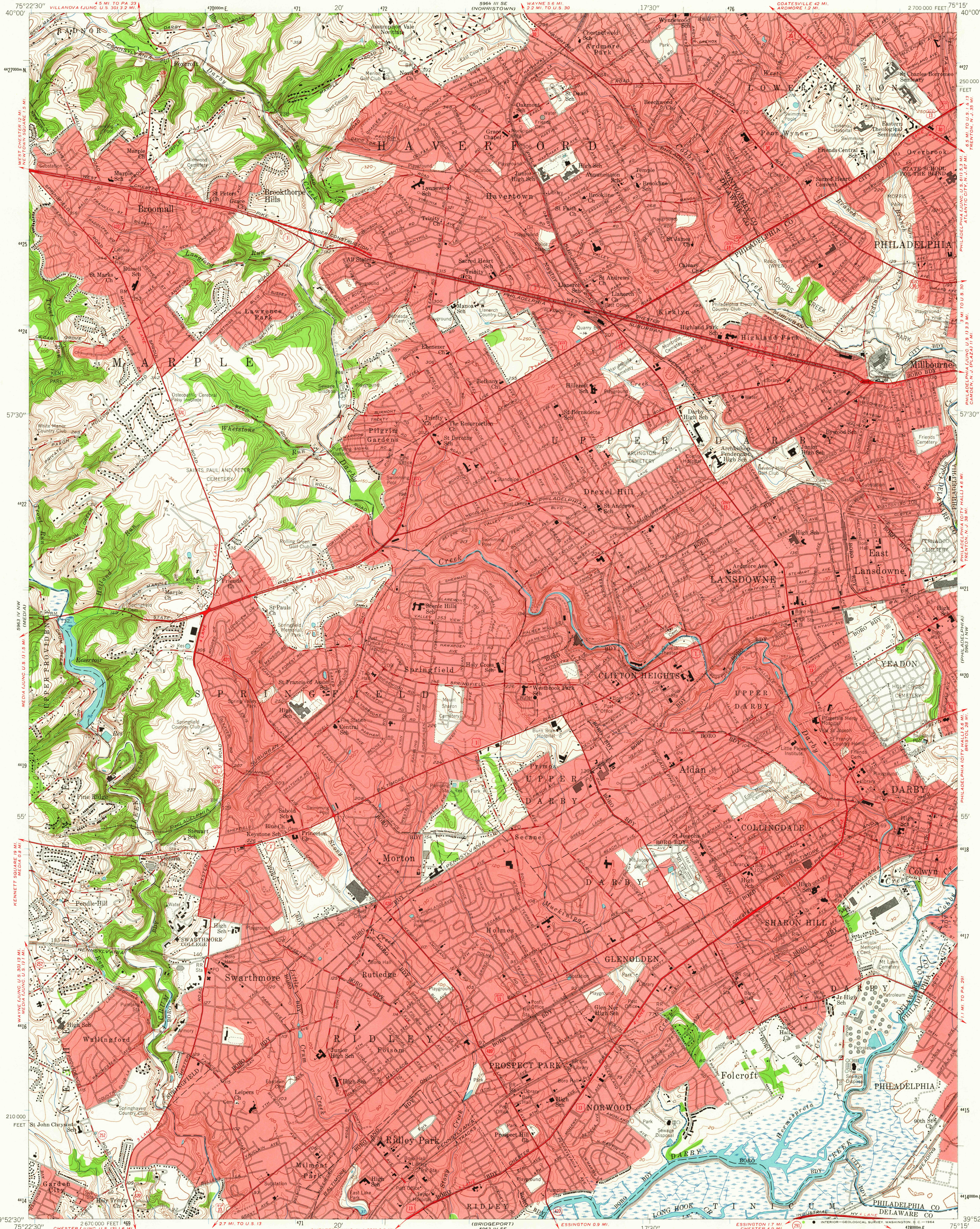
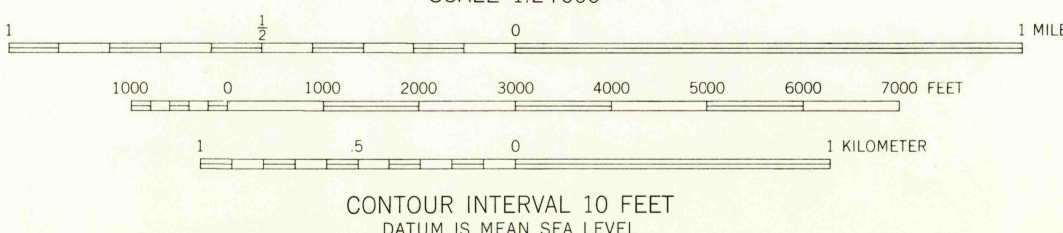
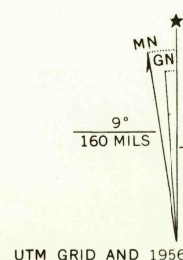


UNITED STATES
DEPARTMENT OF THE INTERIOR
GEOLOGICAL SURVEY

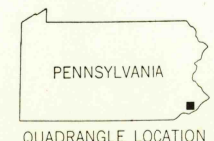
LANSDOWNE QUADRANGLE
PENNSYLVANIA
7.5 MINUTE SERIES (TOPOGRAPHIC)
NE/4 CHESTER 15' QUADRANGLE



Maped, edited, and published by the Geological Survey
Control by USGS, USC&GS, and Pennsylvania Railroad
Topography by planetable surveys 1939-1940. Revised 1956
Polyconic projection. 1927 North American datum
10,000-foot grid based on Pennsylvania coordinate system,
south zone. 1,000-meter Universal Transverse Mercator
grid ticks, zone 18, shown in blue
Red tint indicates areas in which only
landmark buildings are shown



USGS
Historical File
Topographic Division



ROAD CLASSIFICATION
Heavy-duty ——— Light-duty ———
Medium-duty ——— Unimproved dirt ———
U.S. Route ——— State Route ———

LANSDOWNE, PA.
NE/4 CHESTER 15' QUADRANGLE
N3952.5-W7515.7.5

1956

AMS 5963 IV NE-SERIES V851

NOV 9 1964

6055

U.S.G.S.

FILE COPY
TOPOGRAPHIC DIVISION

THIS MAP COMPLIES WITH NATIONAL MAP ACCURACY STANDARDS
FOR SALE BY U.S. GEOLOGICAL SURVEY, WASHINGTON 25, D.C.
A FOLDER DESCRIBING TOPOGRAPHIC MAPS AND SYMBOLS IS AVAILABLE ON REQUEST