

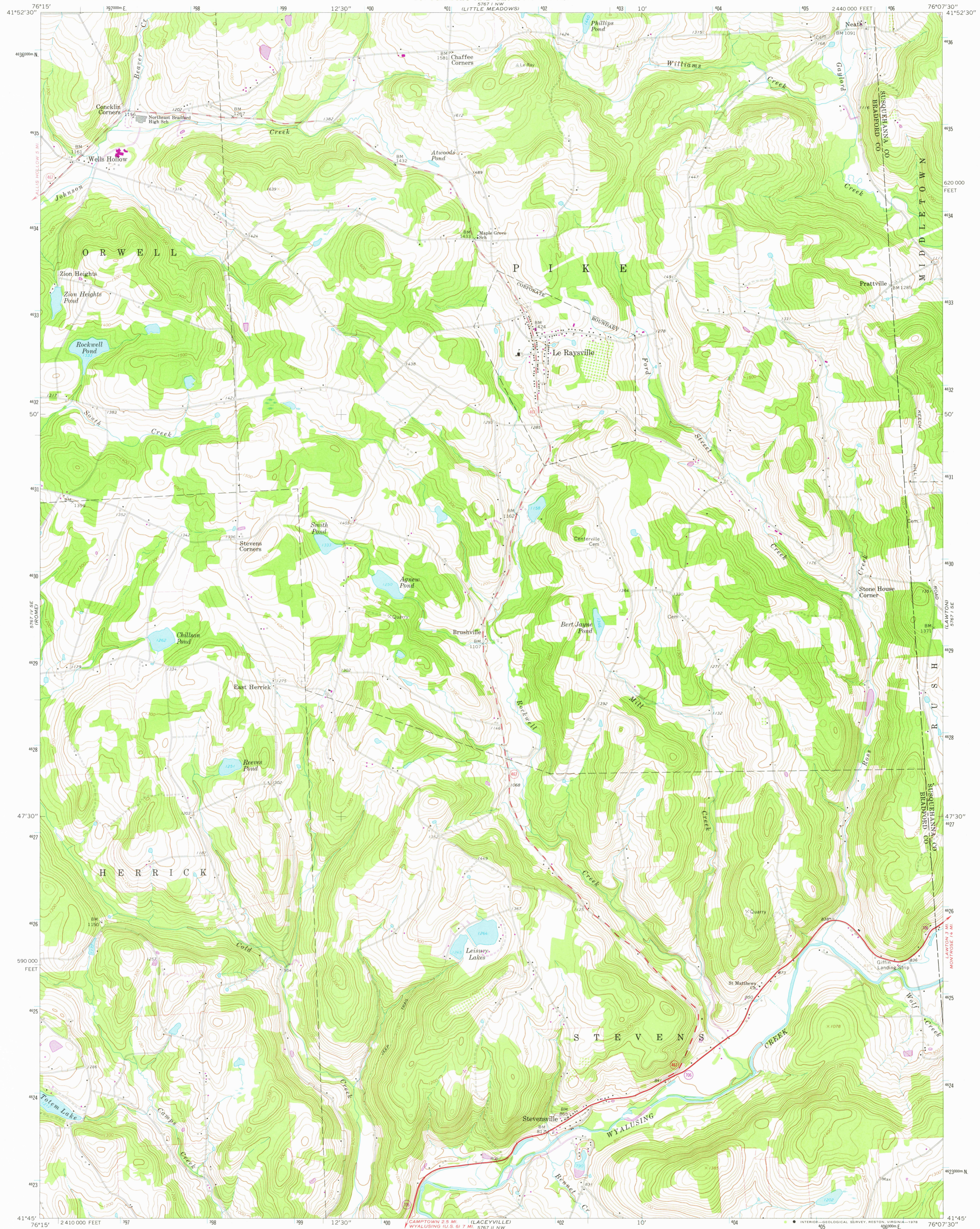
5767 I SW
(WYALUSING)

UNITED STATES
DEPARTMENT OF THE INTERIOR
GEOLOGICAL SURVEY

COMMONWEALTH OF PENNSYLVANIA
STATE PLANNING BOARD
TOPOGRAPHIC AND GEOLOGIC SURVEY

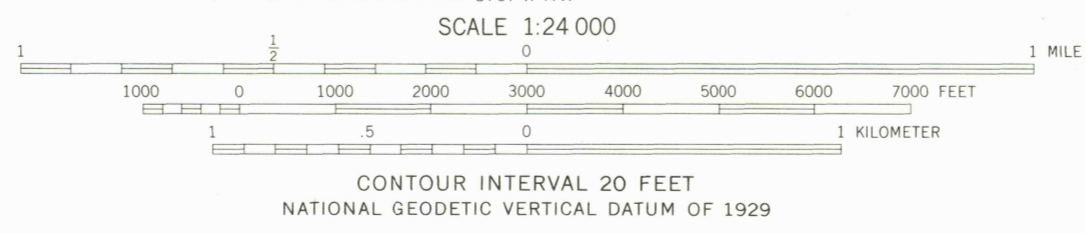
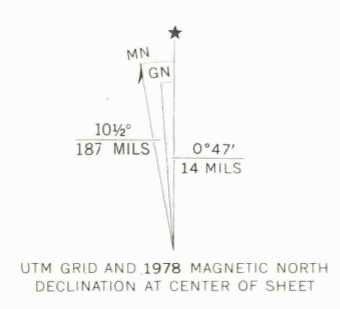
LE RAYSVILLE QUADRANGLE
PENNSYLVANIA
7.5 MINUTE SERIES (TOPOGRAPHIC)

5767 I NE
(FRANKSVILLE)



5767 I SE
(KONNER)

Mapped, edited, and published by the Geological Survey
Control by USGS and USC&GS
Topography by photogrammetric methods from aerial
photographs taken 1956-67. Field checked 1967
Polyconic projection. 1927 North American datum
10,000-foot grid based on Pennsylvania coordinate system, north zone
1000-meter Universal Transverse Mercator grid ticks,
zone 18, shown in blue
Fine red dashed lines indicate selected fence and field lines where
generally visible on aerial photographs. This information is unchecked
Revisions shown in purple compiled in cooperation with the state of
Pennsylvania agencies from aerial photographs taken 1976
This information not field checked. Map edited 1978



ROAD CLASSIFICATION

Primary highway, all weather, hard surface	Light-duty road, all weather, improved surface
Secondary highway, all weather, hard surface	Unimproved road, fair or dry weather
U. S. Route	State Route

USGS
Historical File
Topographic Division

LE RAYSVILLE, PA.
N4145-W7607.5/7.5
1967
PHOTOREVISED 1978
AMS 5767 I SW-SERIES V831

OCT 13 1978

3400

5767 I NE
(FRANKSVILLE)

5767 I SE
(KONNER)