

GALETON

TIADAGHTON

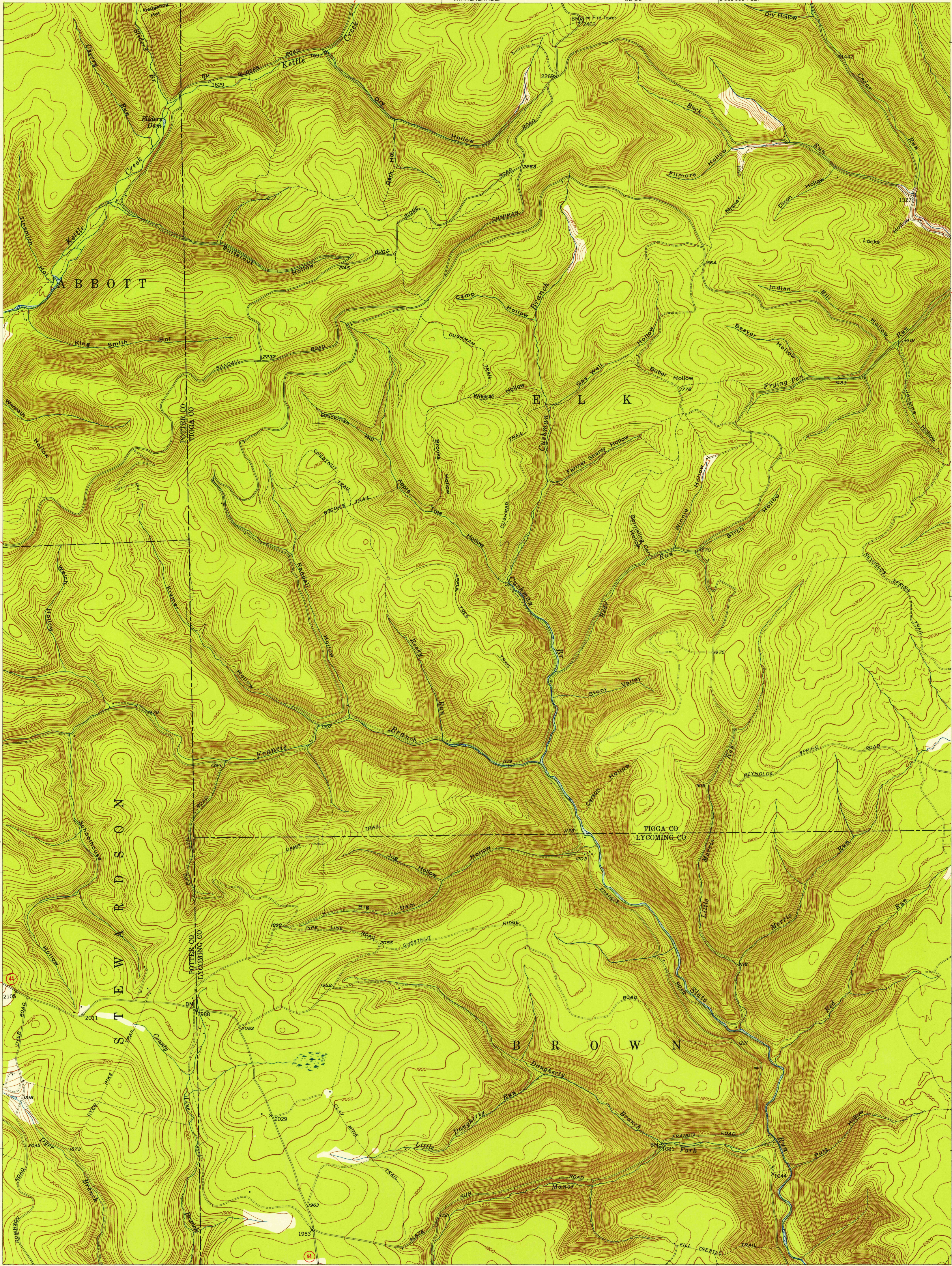
77°37'30"
41°37'30"

32°30"

77°30"
41°37'30"

9.8 MI. TO U.S. 6
MARSHLANDS 7.2 MI.

11 MI. TO U.S. 6
MARSHLANDS 8.9 MI.



U.S.G.S.
FILE COPY
TOPOGRAPHIC DIVISION

LEETON, 0.8 MI.
CEDAR RUN QUANC. PA. 0933 6 MI.

OLEONA

32°30"

41°30"

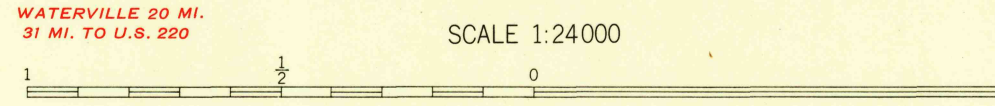
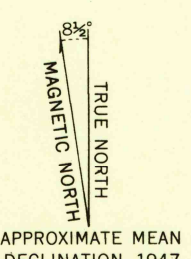
GALETON QUANC. U.S. 6, 19 MI.
GERMANIA QUANC. PA. 1443 8.5 MI.

COLENSPORT 1.5 MI.
OLEONA QUANC. PA. 1443 5.3 MI.

490 000 FEET

12 040 000 FEET

Mapped, edited, and published by the Geological Survey
Control by USGS and USC&GS
Topography from aerial photographs by multiplex methods
Aerial photographs taken 1942. Field check 1947
Polyconic projection. 1927 North American datum
10,000-foot grid based on Pennsylvania coordinate system,
north zone



CONTOUR INTERVAL 20 FEET
DATUM IS MEAN SEA LEVEL

THIS MAP COMPLIES WITH NATIONAL MAP ACCURACY STANDARDS
FOR SALE BY U. S. GEOLOGICAL SURVEY, WASHINGTON 25, D. C.
A FOLDER DESCRIBING TOPOGRAPHIC MAPS AND SYMBOLS IS AVAILABLE ON REQUEST

USGS
Historical File
Topographic Division

ROAD CLASSIFICATION
Heavy-duty ——— 4 LANE 16 LANE Light-duty ———
Medium-duty - - - 4 LANE 16 LANE Unimproved dirt =====
U. S. Route State Route

LEE FIRE TOWER, PA.
N4130-W7730/7.5
1947

U.S.G.S.
FILE COPY
TOPOGRAPHIC DIVISION

WATVERVILLE 1.62500

DEC 2 1994

5840