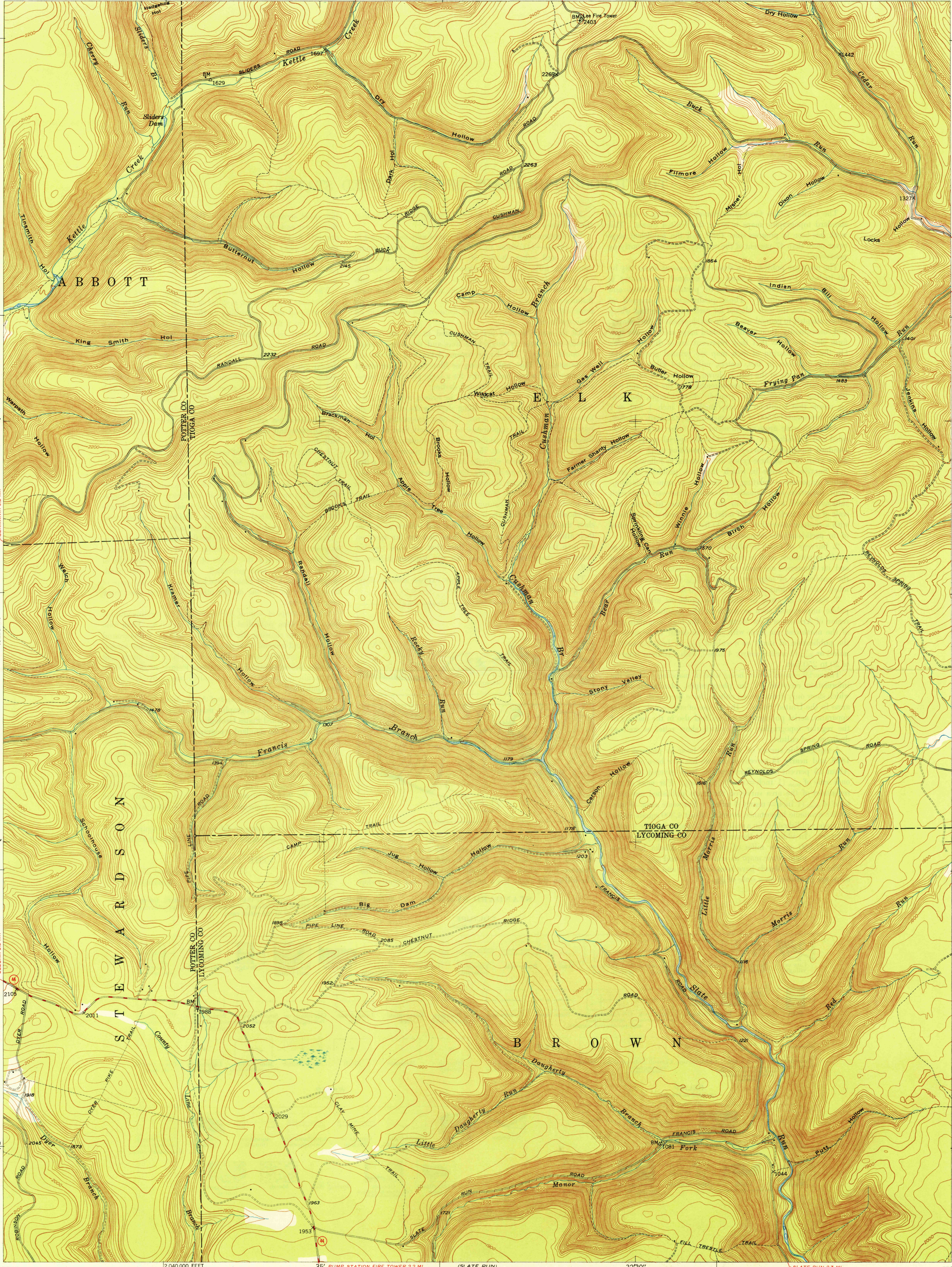


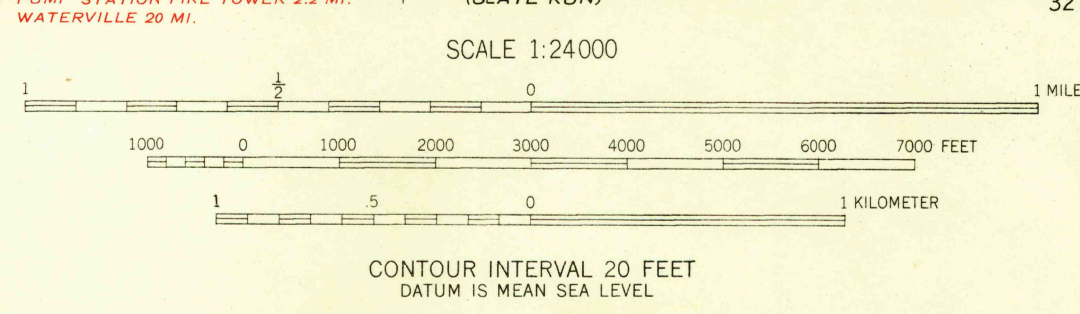
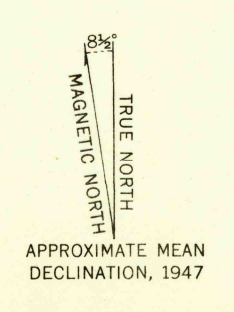
77°37'30" 41°37'30" 35' 9.8 MI. TO U.S. MARSHLANDS 7.2 MI. (MARSHLANDS) 12 MI. TO U.S. MARSHLANDS 9.1 MI. 32°30" 2 060 000 FEET 77°30' 41°37'30" 530 000 FEET

U.S.G.S.
FILE COPY
Inspection and Editing

U.S.G.S.
FILE COPY
TOPOGRAPHIC DIVISION



Mapped, edited, and published by the Geological Survey
Control by USGS and USC&GS
Topography from aerial photographs by multiplex methods
Aerial photographs taken 1942. Field check 1947
Polyconic projection. 1927 North American datum
10,000-foot grid based on Pennsylvania coordinate system,
north zone



USGS
Historical File
Topographic Division
U.S.G.S.
FILE COPY
Inspection and Editing

ROAD CLASSIFICATION

HARD-SURFACE ALL WEATHER ROADS	DRY WEATHER ROADS
Heavy-duty... 4 LANE LANE	Improved dirt... 2 LANE LANE
Medium-duty... 4 LANE LANE	Unimproved dirt... 2 LANE LANE
Loose-surface, graded, or narrow hard-surface	
U.S. Route	State Route

LEE FIRE TOWER, PA.
N4130-W7730/7.5
EDITION OF 1950

THIS MAP COMPLIES WITH NATIONAL MAP ACCURACY STANDARDS
FOR SALE BY U. S. GEOLOGICAL SURVEY, WASHINGTON 25, D. C.

JAN 20 1950 3155