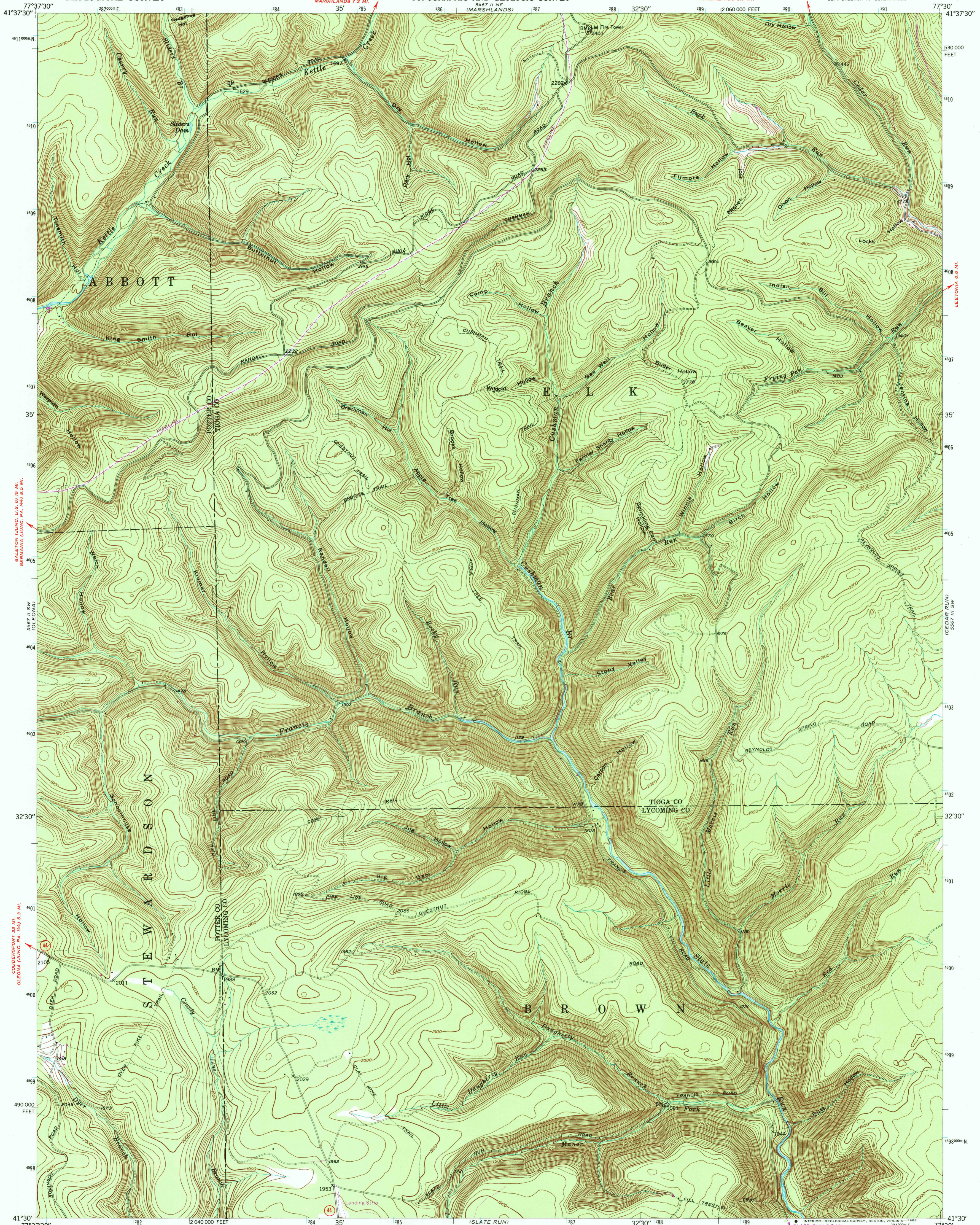


5467 11 NW
(GALETON)

5467 11 NW
(TIDAGHTOWN)



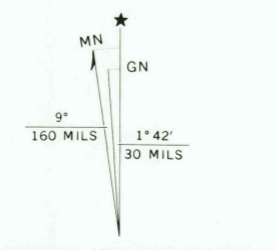
Mapped, edited, and published by the Geological Survey
Control by USGS and USC&GS

Topography from aerial photographs by multiplex methods
Aerial photographs taken 1942. Field check 1947
Polyconic projection. 1927 North American datum
10,000-foot grid based on Pennsylvania coordinate system,
north zone

1000-meter Universal Transverse Mercator grid ticks,
zone 18, shown in blue

Revisions shown in purple compiled in cooperation with State of
Pennsylvania agencies from aerial photographs taken 1971. This
information not field checked

Map photoinspected 1983
No major culture or drainage changes observed



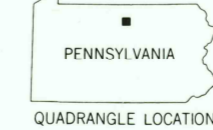
WATERVILLE 20 MI.
31 MI. TO U.S. 220

(SLATE RUN)
5466 1 NE

SCALE 1:24,000



CONTOUR INTERVAL 20 FEET
NATIONAL GEODETIC VERTICAL DATUM OF 1929



ROAD CLASSIFICATION

Hard-surface all weather roads	Dry weather roads
Heavy-duty	Improved dirt
Medium-duty	Unimproved dirt
Loose-surface, graded, or narrow hard-surface	
	State Route

LEE FIRE TOWER, PA.
SE 4 GALETON 15' QUADRANGLE

41077-E5-TF-024

PHOTOINSPECTED 1983

1947
DMA 5467 11 SE-SERIES V831

THIS MAP COMPLIES WITH NATIONAL MAP ACCURACY STANDARDS
FOR SALE BY U. S. GEOLOGICAL SURVEY
DENVER, COLORADO 80225, OR RESTON, VIRGINIA 22092
A FOLDER DESCRIBING TOPOGRAPHIC MAPS AND SYMBOLS IS AVAILABLE ON REQUEST

Move on the predicted North American Datum 1983,
to place the projection lines 4 meters south and
25 meters west as shown by dashed corner ticks

USGS MMP HISTORICAL MAP

SEP 20 1988

REC'D FILE COPY