

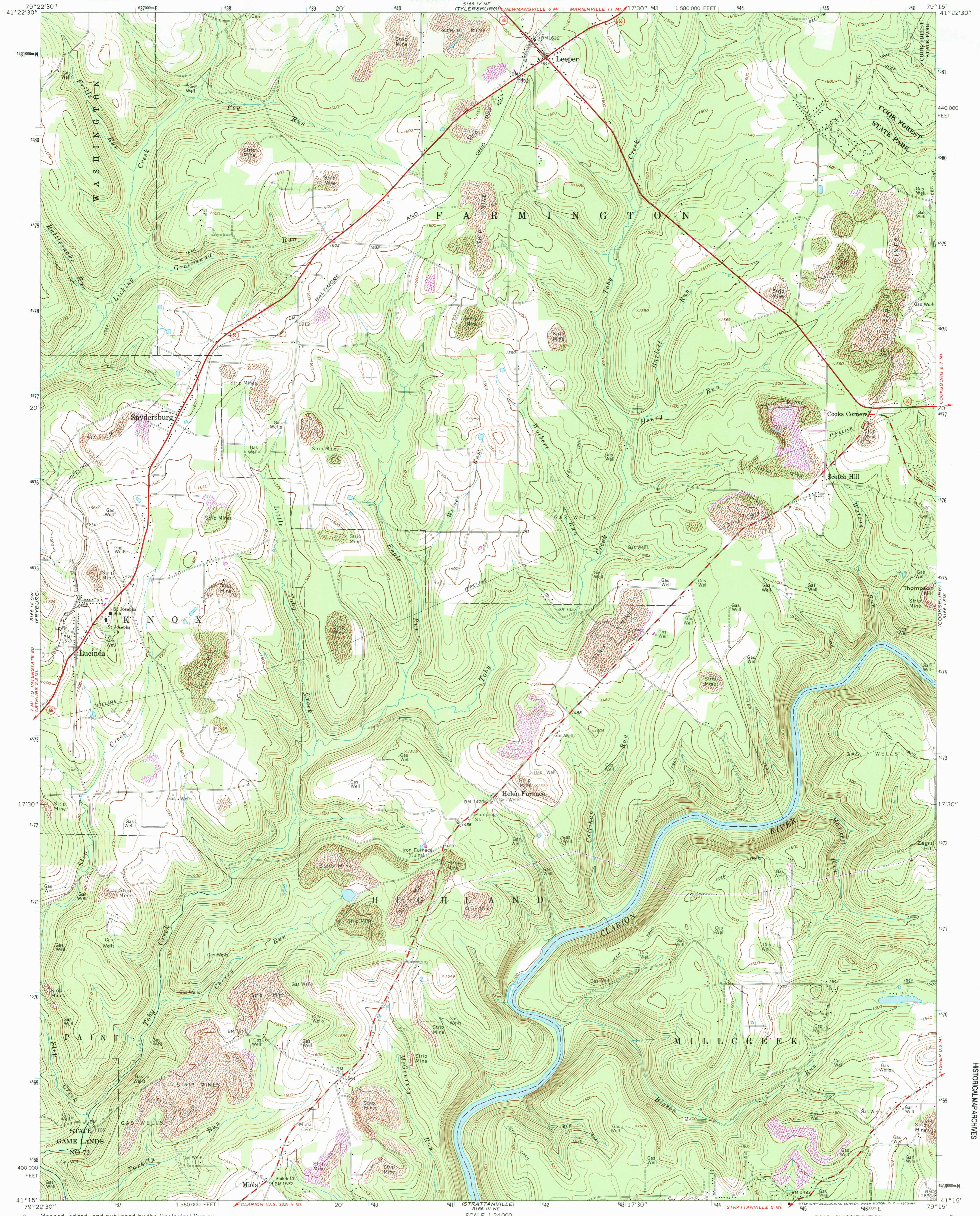
5166 IV NW
(FRYBURG)

UNITED STATES
DEPARTMENT OF THE INTERIOR
GEOLOGICAL SURVEY

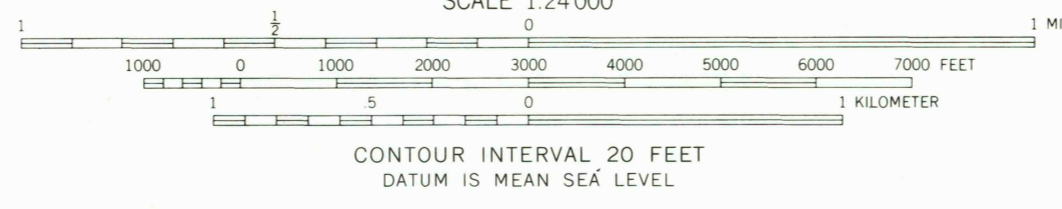
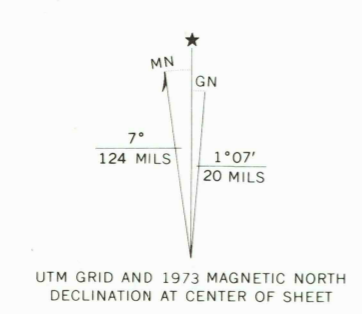
COMMONWEALTH OF PENNSYLVANIA
DEPARTMENT OF ENVIRONMENTAL RESOURCES
TOPOGRAPHIC AND GEOLOGIC SURVEY

LUCINDA QUADRANGLE
PENNSYLVANIA—CLARION CO.
7.5 MINUTE SERIES (TOPOGRAPHIC)
SE/4 TIONESTA 15' QUADRANGLE

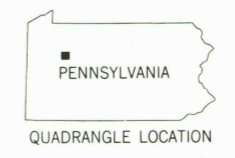
5166 I NW
(MARIENVILLE WEST)



Mapped, edited, and published by the Geological Survey
Control by USGS and USC&GS
Topography by photogrammetric methods from aerial photographs
taken 1967 and 1968. Field checked 1967
Polyconic projection. 1927 North American datum
10,000-foot grid based on Pennsylvania coordinate system, north zone
1000-meter Universal Transverse Mercator grid ticks, zone 17,
shown in blue
Fine red dashed lines indicate selected fence and field lines where
generally visible on aerial photographs. This information is unchecked
Revisions shown in purple compiled in cooperation with
State of Pennsylvania agencies from aerial photographs
taken 1973. This information not field checked



CONTOUR INTERVAL 20 FEET
DATUM IS MEAN SEA LEVEL



ROAD CLASSIFICATION

Primary highway, all weather, hard surface	Light duty road, all weather, improved surface
Secondary highway, all weather, hard surface	Unimproved road, fair or dry weather

State Route

THIS MAP COMPLIES WITH NATIONAL MAP ACCURACY STANDARDS
FOR SALE BY U. S. GEOLOGICAL SURVEY, WASHINGTON, D. C. 20242
A FOLDER DESCRIBING TOPOGRAPHIC MAPS AND SYMBOLS IS AVAILABLE ON REQUEST

LUCINDA, PA.
SE/4 TIONESTA 15' QUADRANGLE
N4115—W7915/7.5
1967
PHOTOREVISED 1973
AMS 5166 IV SE—SERIES V831

RECEIVED
FEB 04 2003
USGS MWD
HISTORICAL MAP ARCHIVES