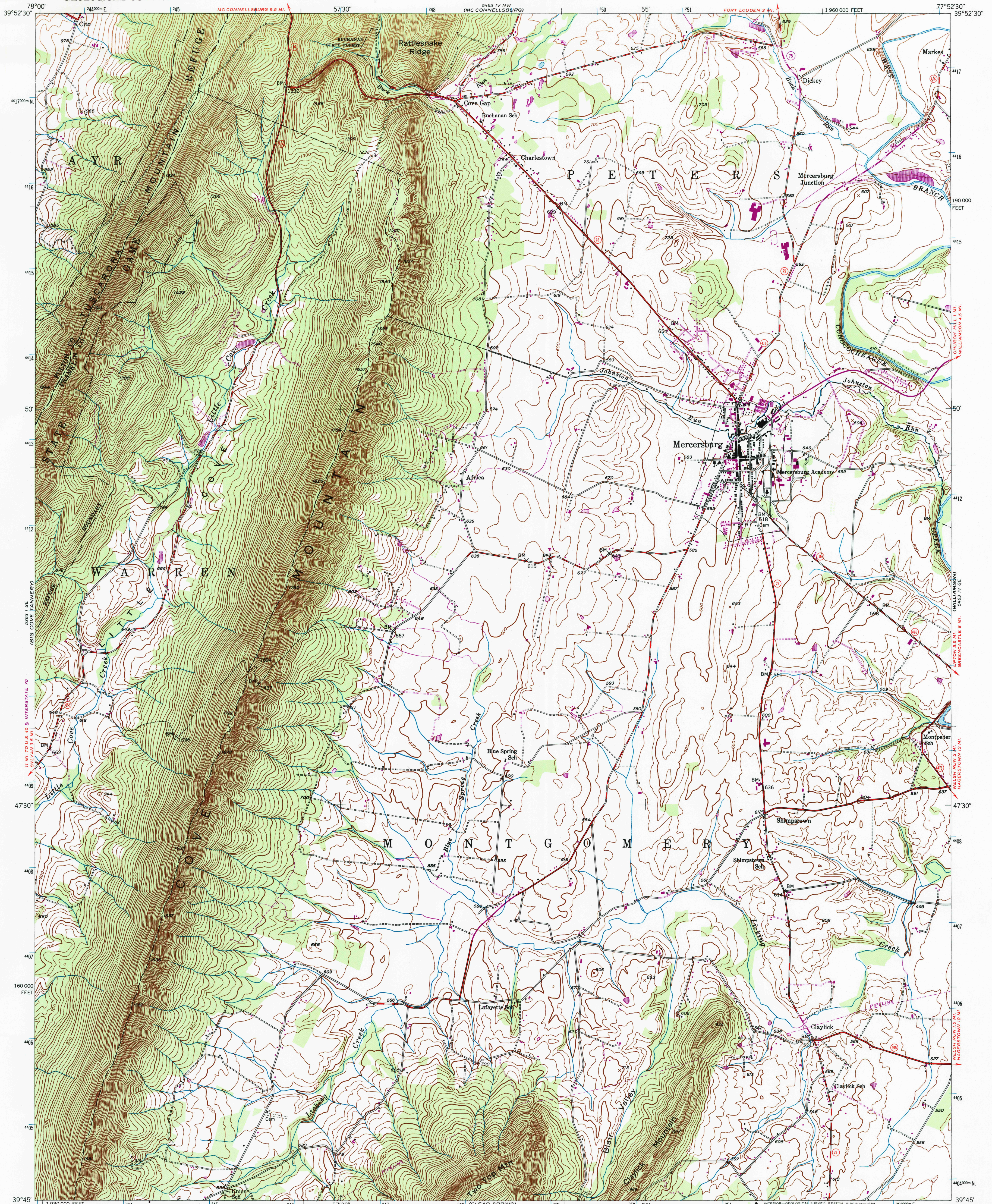
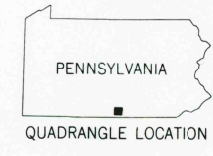
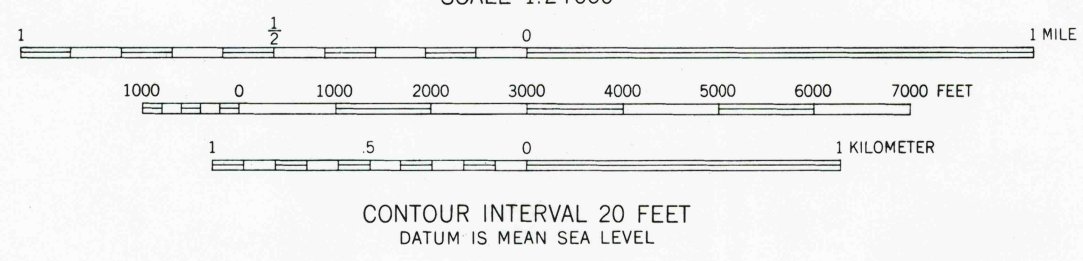
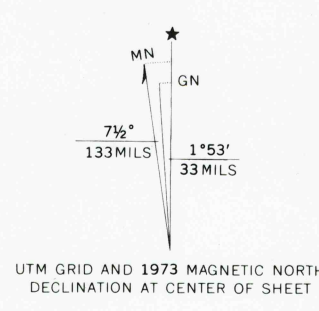


UNITED STATES  
DEPARTMENT OF THE INTERIOR  
GEOLOGICAL SURVEY

MERCERSBURG QUADRANGLE  
PENNSYLVANIA  
7.5 MINUTE SERIES (TOPOGRAPHIC)



Mapped by the Army Map Service  
Published for civil use by the Geological Survey  
Control by USGS, USC&GS, and USFS  
Topography from aerial photographs by KEK plotter  
Aerial photographs taken 1943. Field check 1943  
Polyconic projection. 1927 North American datum  
10,000-foot grid based on Pennsylvania coordinate system,  
south zone  
No distinction is made between dwellings, barns,  
commercial and industrial buildings  
1000-meter Universal Transverse Mercator grid ticks,  
zone 18, shown in blue  
Revisions shown in purple compiled by the Geological Survey in  
cooperation with State of Pennsylvania agencies, from aerial  
photographs taken 1968 and 1973. This information not field checked



ROAD CLASSIFICATION			
Heavy-duty	Light-duty	Unimproved dirt	
Medium-duty			
U.S. Route	State Route		

MERCERSBURG, PA.

N3945-W7752.5/7.5  
1943

PHOTOREVISED 1968 AND 1973  
AMS 5463 IV SW-SERIES V831

THIS MAP COMPLIES WITH NATIONAL MAP ACCURACY STANDARDS  
FOR SALE BY U.S. GEOLOGICAL SURVEY, RESTON, VIRGINIA 22092  
A FOLDER DESCRIBING TOPOGRAPHIC MAPS AND SYMBOLS IS AVAILABLE ON REQUEST

RETURN TO:  
USGS NHD HISTORICAL MAP ARCHIVES