

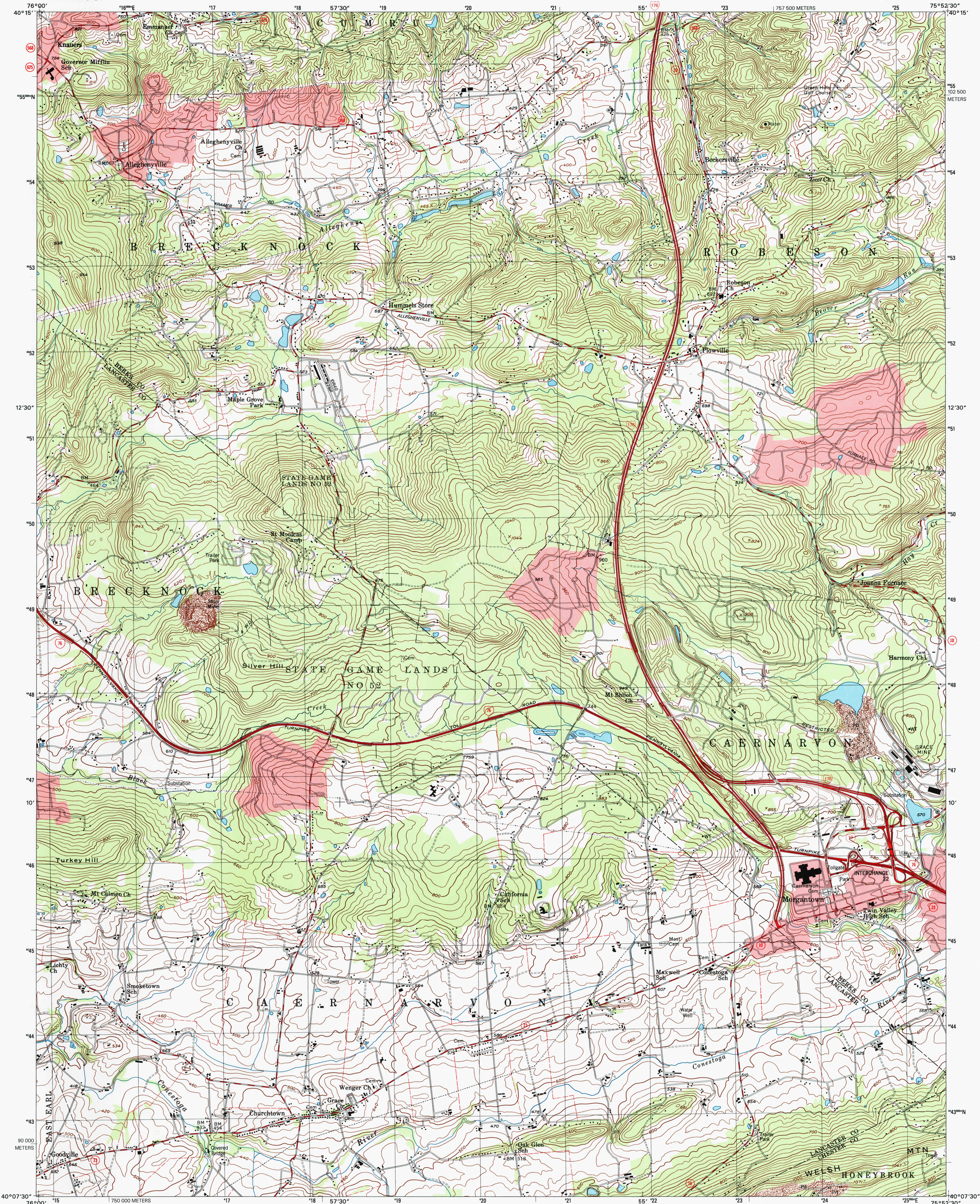


U.S. DEPARTMENT OF THE INTERIOR  
U.S. GEOLOGICAL SURVEY



COMMONWEALTH OF PENNSYLVANIA  
DEPARTMENT OF CONSERVATION AND NATURAL RESOURCES  
BUREAU OF TOPOGRAPHIC AND GEOLOGIC SURVEY

MORGANTOWN QUADRANGLE  
PENNSYLVANIA  
7.5-MINUTE SERIES (TOPOGRAPHIC)

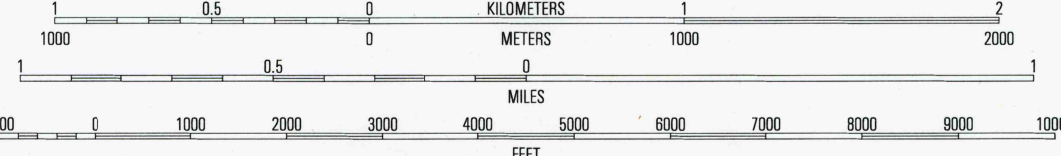
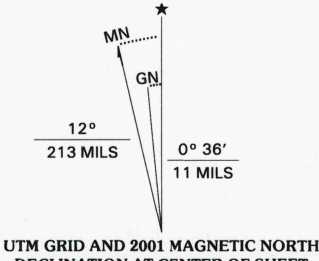


RECEIVED

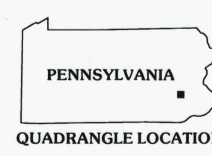
JUL 31 2001

USGS NWHD  
HISTORICAL MAP ARCHIVES

Produced by the United States Geological Survey  
in cooperation with Pennsylvania Department of  
Conservation and Natural Resources, Bureau of  
Topographic and Geologic Survey  
Topography compiled 1999. Planimetry derived from imagery  
taken 1999 and other sources. Survey control current as of 1956  
North American Datum of 1983 (NAD 83). Projection and  
1 000-meter grid: Universal Transverse Mercator, zone 18  
2 500-meter ticks: Pennsylvania Coordinate System of 1983  
(south zone)  
North American Datum of 1927 (NAD 27) is shown by dashed  
corner ticks. The values of the shift between NAD 83 and  
NAD 27 for 7.5-minute intersections are obtainable from  
National Geodetic Survey NADCON software  
There may be private inholdings within the boundaries of the  
National or State reservations shown on this map  
Landmark buildings verified 1956



CONTOUR INTERVAL 20 FEET  
NATIONAL GEODETIC VERTICAL DATUM OF 1929  
TO CONVERT FROM FEET TO METERS, MULTIPLY BY 0.3048



QUADRANGLE LOCATION

ROAD CLASSIFICATION  
Primary highway  
hard surface .....  
Secondary highway  
hard surface .....  
Unimproved road .....  
Light-duty road, hard or  
improved surface .....  
Interstate Route  
U.S. Route  
State Route

1	2	3	1 Sinking Spring
			2 Reading
			3 Birdsboro
4		5	4 Terre Hill
			5 Berwyn
			6 New Holland
6	7	8	7 Honey Brook
			8 Wagonetown

MORGANTOWN, PA  
1999

NIMA 5864 III NW-SERIES V831

