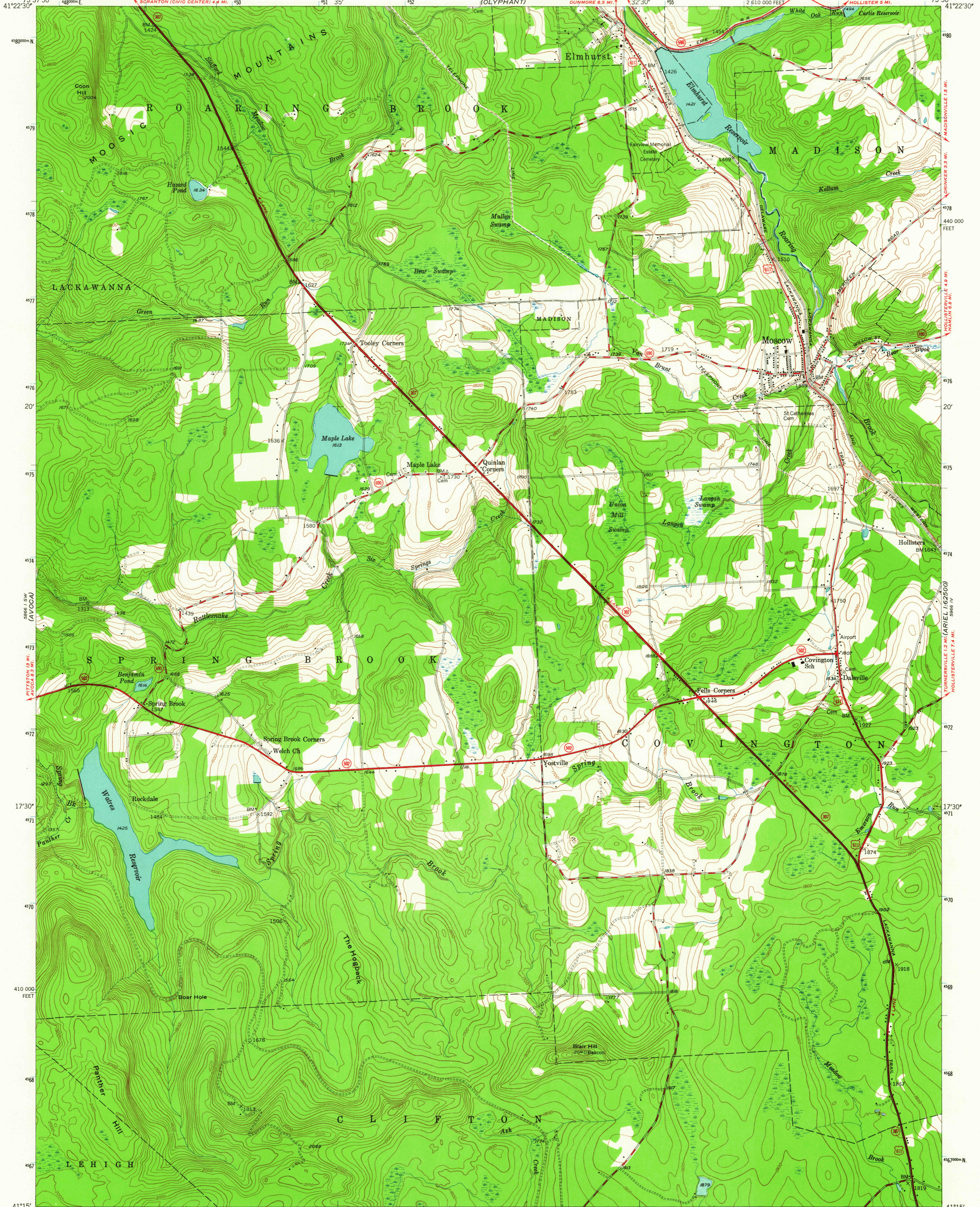
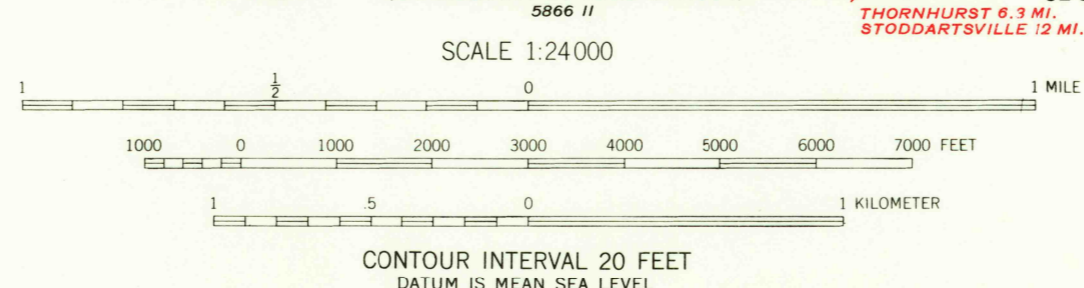
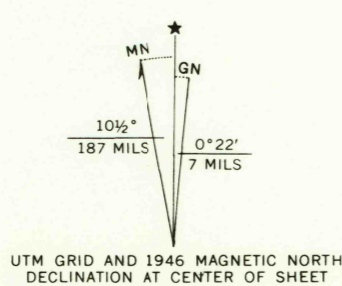


UNITED STATES
DEPARTMENT OF THE INTERIOR
GEOLOGICAL SURVEY

MOSCOW QUADRANGLE
PENNSYLVANIA-LACKAWANNA CO.
7.5 MINUTE SERIES (TOPOGRAPHIC)



Mapped, edited, and published by the Geological Survey
Control by USGS and USC&GS
Topography from aerial photographs by multiplex methods
Aerial photographs taken 1942 Field check, 1946
Polyconic projection, 1927 North American datum
10,000-foot grid based on Pennsylvania coordinate system,
north zone.
1000-meter Universal Transverse Mercator grid ticks,
zone 18, shown in blue



USGS
Historical File
Topographic Division

ROAD CLASSIFICATION

HARD-SURFACE ALL WEATHER ROADS	DRY WEATHER ROADS
Heavy-duty - 2 LANE LANE	Improved dirt -
Medium-duty - 2 LANE LANE	Unimproved dirt -
Loose-surface, graded, or narrow hard-surface -	
U. S. Route	State Route

U.S.G.S. FILE COPY
TOPOGRAPHIC DIVISION
MOSCOW, PA.
N4115-W7530/7.5
1946
AMS 5866 1 SE-SERIES V831

THIS MAP COMPLIES WITH NATIONAL MAP ACCURACY STANDARDS
FOR SALE BY U. S. GEOLOGICAL SURVEY, WASHINGTON 25, D. C.
A FOLDER DESCRIBING TOPOGRAPHIC MAPS AND SYMBOLS IS AVAILABLE ON REQUEST