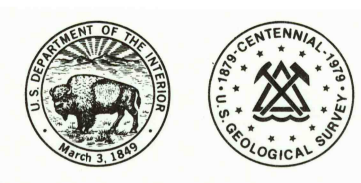


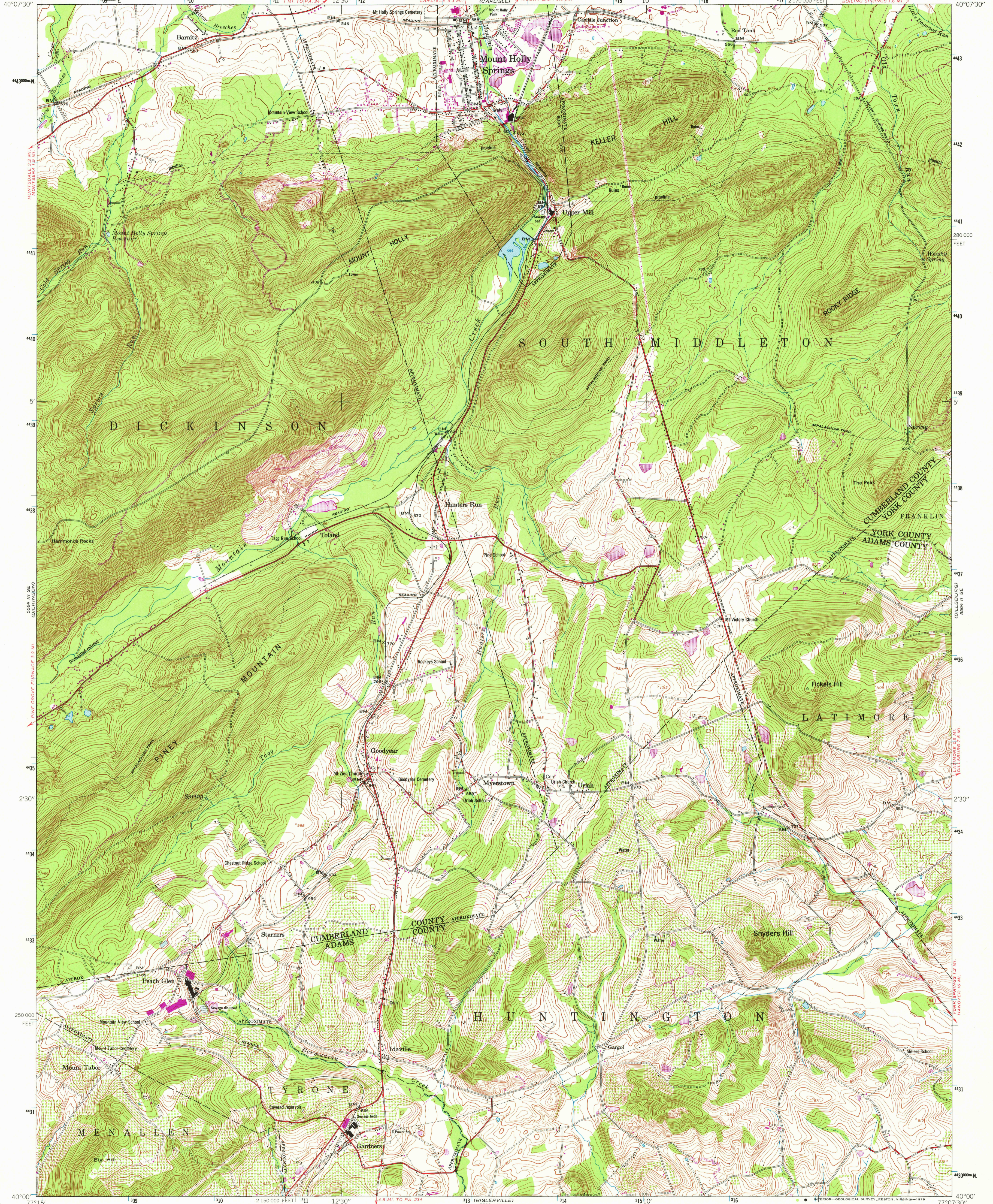
589 1/4 NE  
(MERCATOR)

UNITED STATES  
DEPARTMENT OF THE INTERIOR  
GEOLOGICAL SURVEY

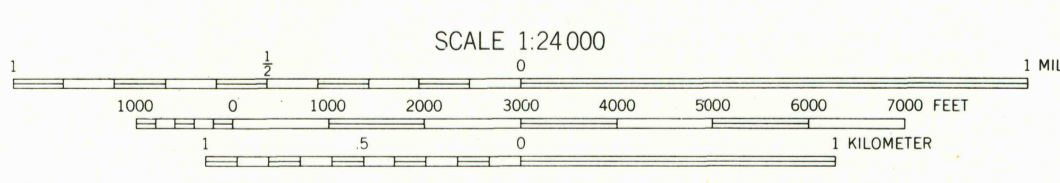
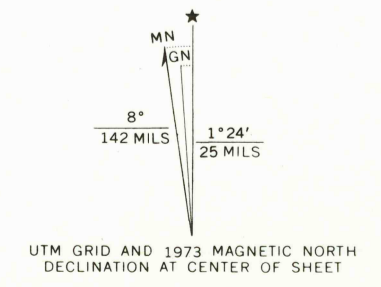


MOUNT HOLLY SPRINGS QUADRANGLE  
PENNSYLVANIA  
7.5 MINUTE SERIES (TOPOGRAPHIC)  
SW/4 CARLISLE 15' QUADRANGLE

589 1/4 NE  
(MERCATOR)



Maped by the Army Map Service  
Published for civil use by the Geological Survey  
Control by USGS, USC&GS, USCE, and USFS  
Topography from aerial photographs by photogrammetric methods  
Aerial photographs taken 1951. Field check 1952  
Polyconic projection. 1927 North American datum  
10,000-foot grid based on Pennsylvania coordinate system, south zone  
1000-meter Universal Transverse Mercator grid ticks,  
zone 18, shown in blue  
Revisions shown in purple compiled by the Geological Survey in  
cooperation with State of Pennsylvania agencies from aerial photographs  
taken 1968 and 1973. This information not field checked



CONTOUR INTERVAL 10 FEET  
NATIONAL GEODETIC VERTICAL DATUM OF 1929



USGS  
Historical File  
Topographic Division

ROAD CLASSIFICATION  
Heavy-duty ——— Light-duty ———  
Medium-duty ——— Unimproved dirt - - - - -  
State Route ○

MOUNT HOLLY SPRINGS, PA.  
SW/4 CARLISLE 15' QUADRANGLE  
N4000-W7707.5/7.5  
1952  
PHOTOREVISED 1968 AND 1973  
AMS 5564 II SW-SERIES V831

APR 10 1978

430

THIS MAP COMPLIES WITH NATIONAL MAP ACCURACY STANDARDS  
FOR SALE BY U. S. GEOLOGICAL SURVEY, RESTON, VIRGINIA 22092  
A FOLDER DESCRIBING TOPOGRAPHIC MAPS AND SYMBOLS IS AVAILABLE ON REQUEST