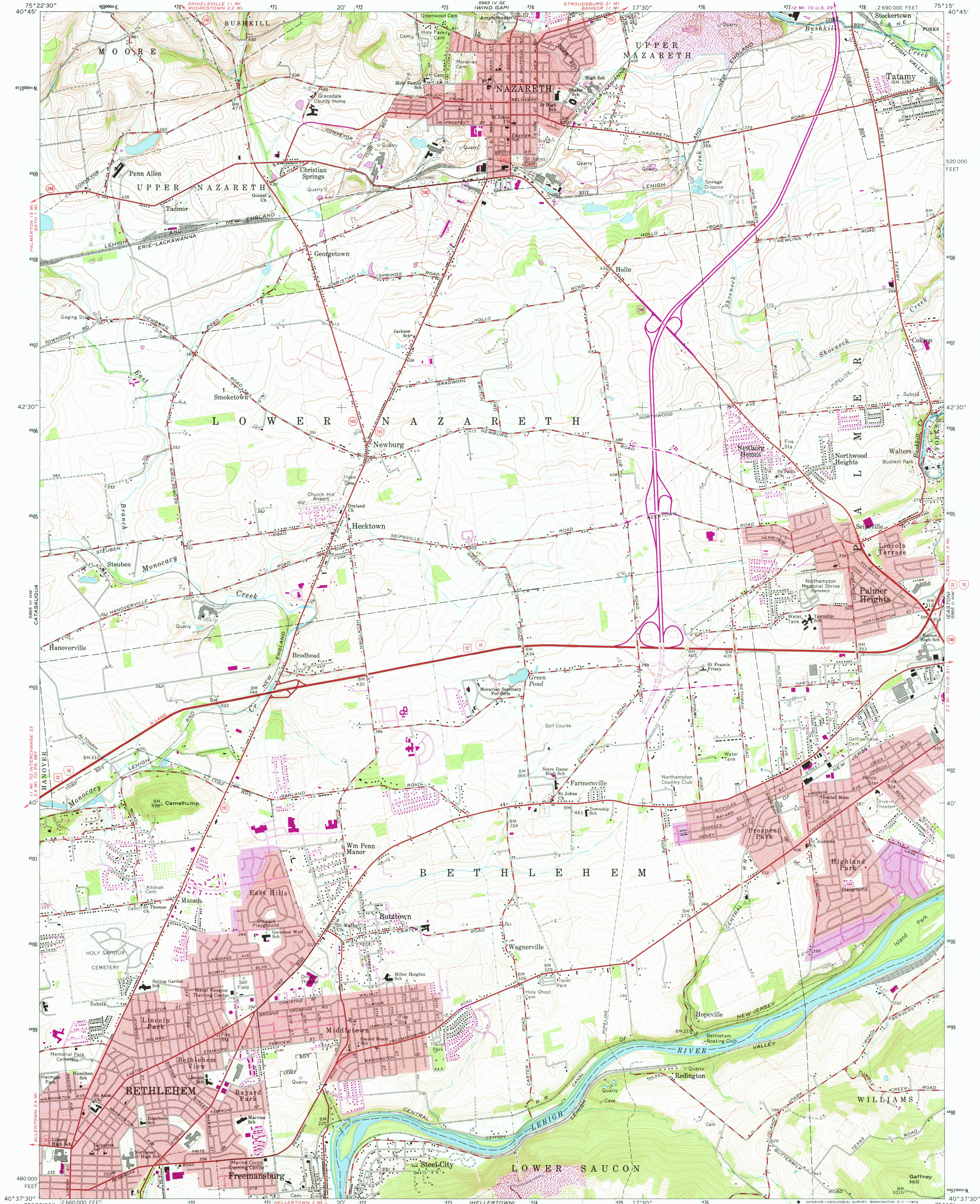


UNITED STATES
DEPARTMENT OF THE INTERIOR
GEOLOGICAL SURVEY

NAZARETH QUADRANGLE
PENNSYLVANIA—NORTHAMPTON CO.
7.5 MINUTE SERIES (TOPOGRAPHIC)
NE/4 ALLENTOWN 15' QUADRANGLE

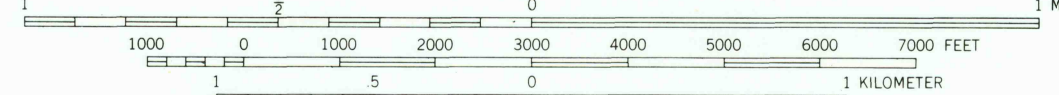
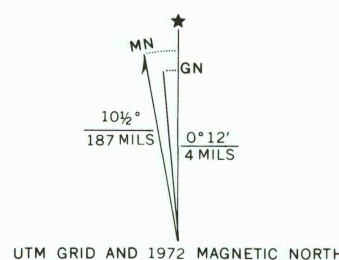


Mapped, edited, and published by the Geological Survey
Control by USGS and USC&GS

Topography by photogrammetric methods from aerial
photographs taken 1962. Field checked 1964

Polyconic projection. 1927 North American datum
10,000-foot grid based on Pennsylvania coordinate system, south zone
1000-meter Universal Transverse Mercator grid ticks,
zone 18, shown in blue

Fine red dashed lines indicate selected fence and field lines where
generally visible on aerial photographs. This information is unchecked
Red tint indicates areas in which only landmark buildings are shown



CONTOUR INTERVAL 10 FEET
DATUM IS MEAN SEA LEVEL

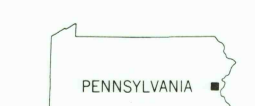
THIS MAP COMPLIES WITH NATIONAL MAP ACCURACY STANDARDS
FOR SALE BY U.S. GEOLOGICAL SURVEY, WASHINGTON, D.C. 20242
A FOLDER DESCRIBING TOPOGRAPHIC MAPS AND SYMBOLS IS AVAILABLE ON REQUEST

ROAD CLASSIFICATION
Heavy-duty ——— Light-duty ———
Medium-duty ——— Unimproved dirt ———
Interstate Route ——— U.S. Route ——— State Route ———

USGS
Historical File
Topographic Division

NAZARETH, PA.
NE/4 ALLENTOWN 15' QUADRANGLE
N4037.5—W7515.7/5

1964
PHOTOREVISED 1972
AMS 5965 III NE—SERIES V831



Revisions shown in purple located in cooperation with
State of Pennsylvania agencies from aerial photographs
taken 1972. This information not field checked
Purple tint indicates extension of urban areas

2625
MAR 15 1978