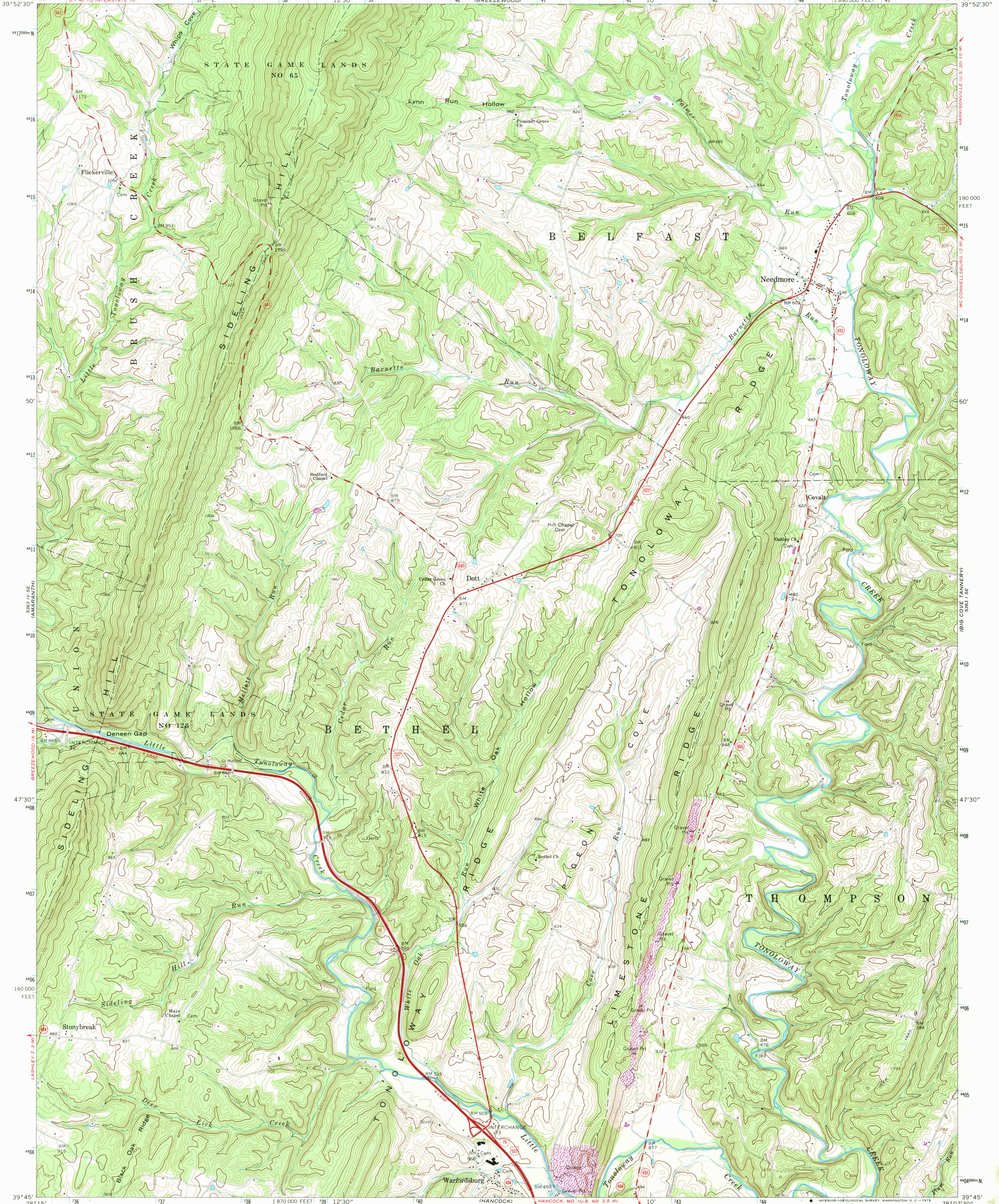
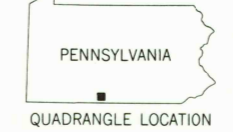
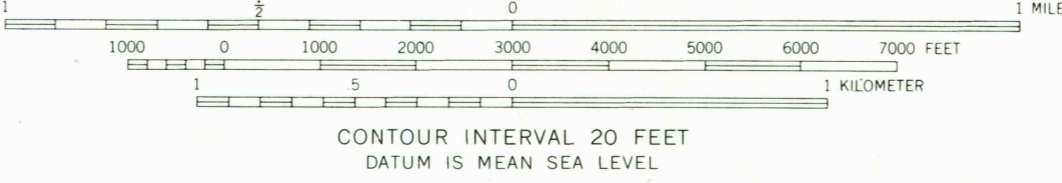
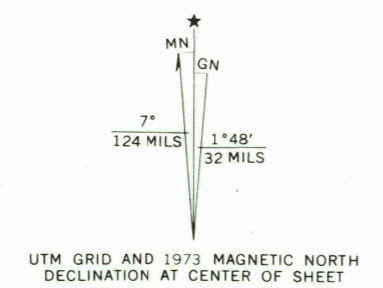


78° 15' 39° 52' 30" 7370000 E 738 12° 30' 739 740 (BREEZEWOOD) 741 742 10' 743 744 1890000 FEET 745 78° 07' 30" 39° 52' 30"



Mapped, edited, and published by the Geological Survey
Control by USGS and USC&GS
Topography by photogrammetric methods from aerial photographs taken 1966. Field checked 1967
Polyconic projection. 1927 North American datum
10,000-foot grid based on Pennsylvania coordinate system, south zone
1000-meter Universal Transverse Mercator grid ticks, zone 17, shown in blue
Fine red dashed lines indicate selected fence and field lines where generally visible on aerial photographs. This information is unchecked
Revisions shown in purple compiled in cooperation with State of Pennsylvania agencies from aerial photographs taken 1973. This information not field checked
Map photoinspected 1977
No major culture or drainage changes observed



ROAD CLASSIFICATION

Primary highway, all weather, hard surface	Light-duty road, all weather, improved surface
Secondary highway, all weather, hard surface	Unimproved road, fair or dry weather

○ Interstate Route □ U. S. Route ○ State Route

NEEDMORE, PA.
N3945—W7807.5/7.5
PHOTOINSPECTED 1977
1967
PHOTOREVISED 1973
AMS 5363 I SW—SERIES V831

THIS MAP COMPLIES WITH NATIONAL MAP ACCURACY STANDARDS
FOR SALE BY U. S. GEOLOGICAL SURVEY, WASHINGTON, D. C. 20242
A FOLDER DESCRIBING TOPOGRAPHIC MAPS AND SYMBOLS IS AVAILABLE ON REQUEST

RETURN TO:
USGS AND HISTORICAL MAP ARCHIVES

SEP 21 1986

CHERRY RUN
5363 I SW