

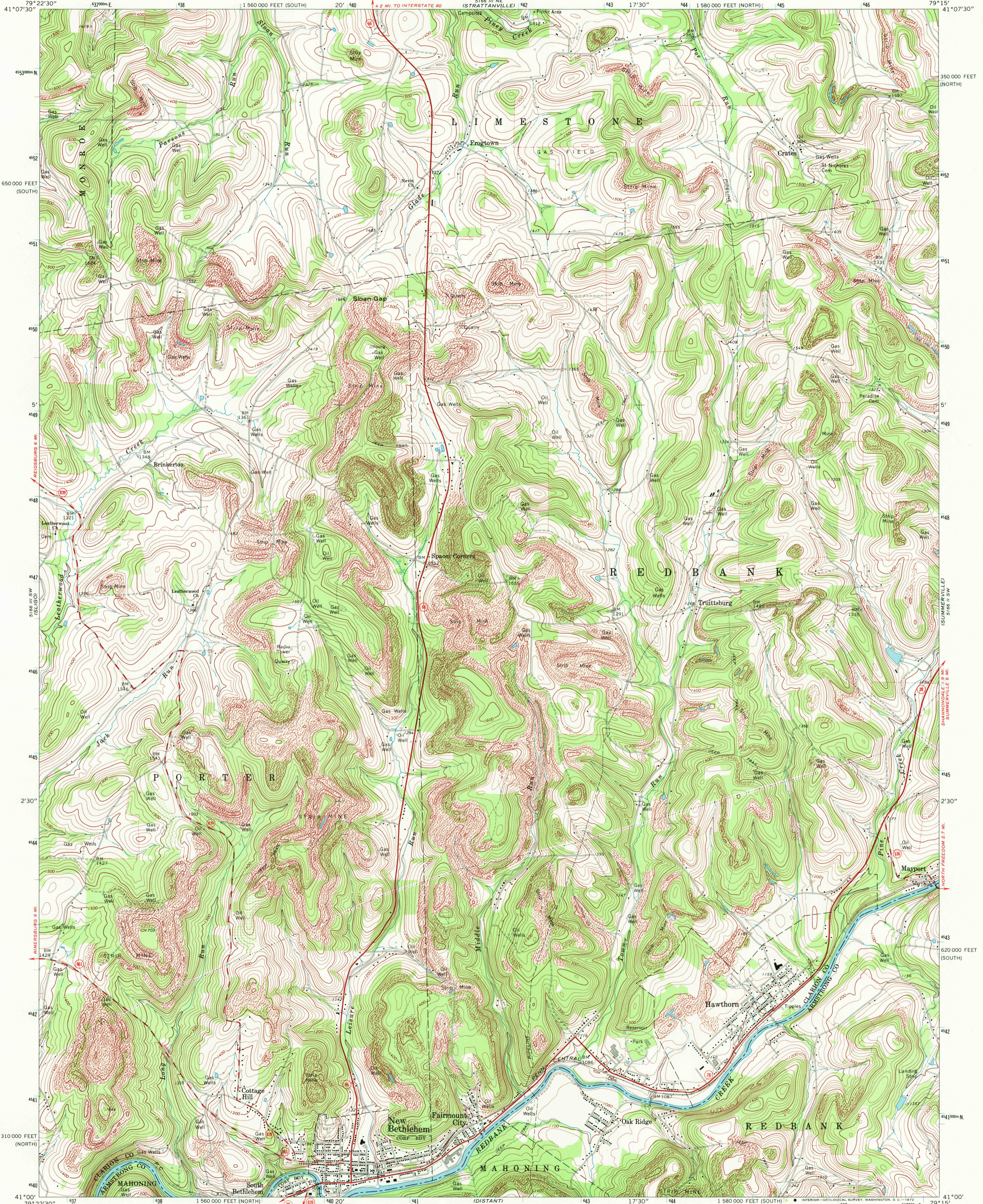
5166 III NW
CLARION
79° 22' 30"

UNITED STATES
DEPARTMENT OF THE INTERIOR
GEOLOGICAL SURVEY

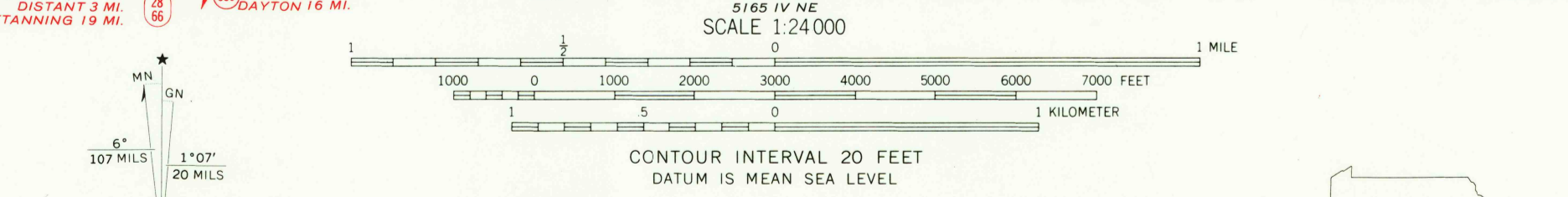
COMMONWEALTH OF PENNSYLVANIA
DEPARTMENT OF ENVIRONMENTAL RESOURCES
TOPOGRAPHIC AND GEOLOGIC SURVEY

NEW BETHEHEM QUADRANGLE
PENNSYLVANIA
7.5 MINUTE SERIES (TOPOGRAPHIC)
SE/4 CLARION 15' QUADRANGLE

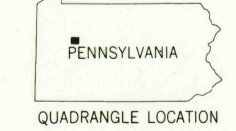
5166 III NW
CORSCA
79° 15'



Mapped, edited, and published by the Geological Survey
Control by USGS and USC&GS
Topography by photogrammetric methods from aerial photographs taken 1967. Field checked 1969
Polyconic projection. 1927 North American datum
10,000-foot grids based on Pennsylvania coordinate system, north and south zones
1000-meter Universal Transverse Mercator grid ticks, zone 17, shown in blue
Fine red dashed lines indicate selected fence and field lines where generally visible on aerial photographs. This information is unchecked



ROAD CLASSIFICATION
Primary highway, hard surface
Secondary highway, hard surface
Light-duty road, hard or improved surface
Unimproved road
Interstate Route
U. S. Route
State Route



NEW BETHEHEM, PA.
SE/4 CLARION 15' QUADRANGLE
N4100—W7915/7.5

THIS MAP COMPLIES WITH NATIONAL MAP ACCURACY STANDARDS
FOR SALE BY U. S. GEOLOGICAL SURVEY, WASHINGTON, D. C. 20242
A FOLDER DESCRIBING TOPOGRAPHIC MAPS AND SYMBOLS IS AVAILABLE ON REQUEST



1969
AMS 5166 III SE—SERIES V831

JUL 24 1972
2750