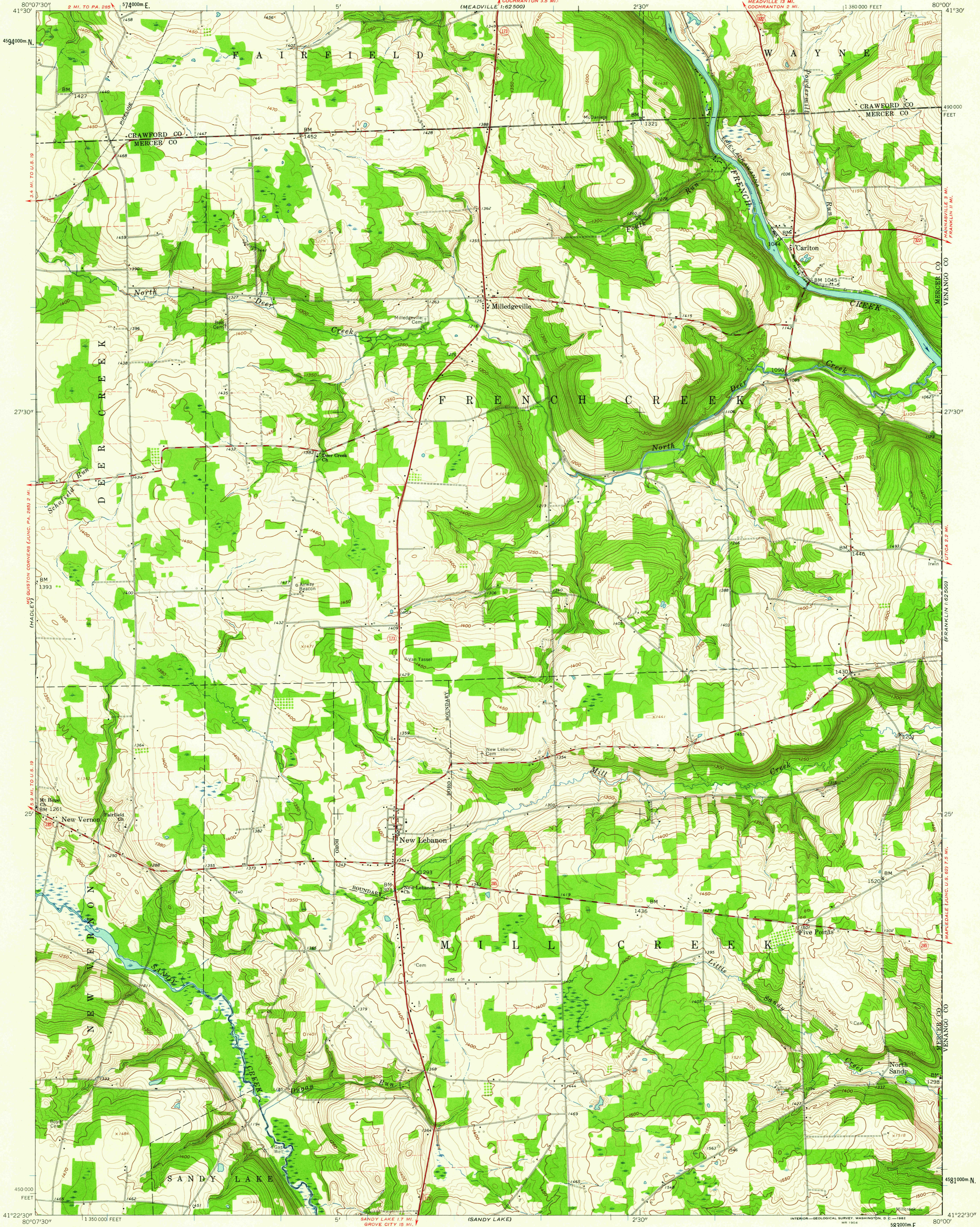
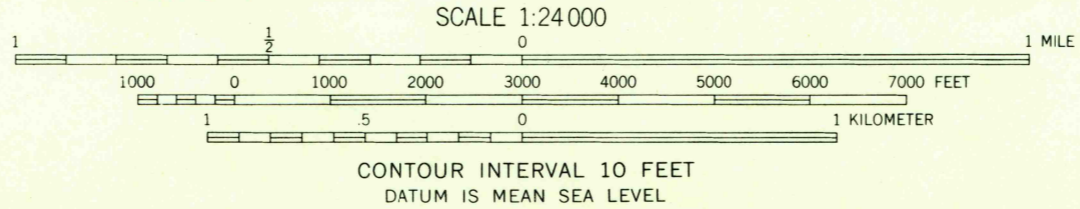


UNITED STATES
DEPARTMENT OF THE INTERIOR
GEOLOGICAL SURVEY

NEW LEBANON QUADRANGLE
PENNSYLVANIA
7.5 MINUTE SERIES (TOPOGRAPHIC)
NE 1/4 STONEBORO 15' QUADRANGLE

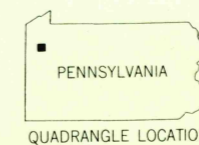


Mapped, edited, and published by the Geological Survey
Control by USGS, USC&GS, USCE, and Pennsylvania Geodetic Survey
Topography from aerial photographs by photogrammetric methods
Aerial photographs taken 1957. Field check 1960
Polyconic projection, 1927 North American datum
10,000-foot grid based on Pennsylvania coordinate system, north zone
1000-meter Universal Transverse Mercator grid ticks,
zone 17, shown in blue
Fine red dashed lines indicate selected fence and field lines where
generally visible on aerial photographs. This information is unchecked



USGS
Historical File
Topographic Division

ROAD CLASSIFICATION
Heavy-duty ——— Light-duty ———
Medium-duty ——— Unimproved dirt ———
U.S. Route ○ State Route ○



NEW LEBANON, PA.
NE 1/4 STONEBORO 15' QUADRANGLE
N 4122.5 - W 8000 (7.5)

1960
FILE COPY
TOPOGRAPHIC DIVISION

THIS MAP COMPLIES WITH NATIONAL MAP ACCURACY STANDARDS
FOR SALE BY U.S. GEOLOGICAL SURVEY, WASHINGTON 25, D. C.
A FOLDER DESCRIBING TOPOGRAPHIC MAPS AND SYMBOLS IS AVAILABLE ON REQUEST

MAY 21 1962

2465