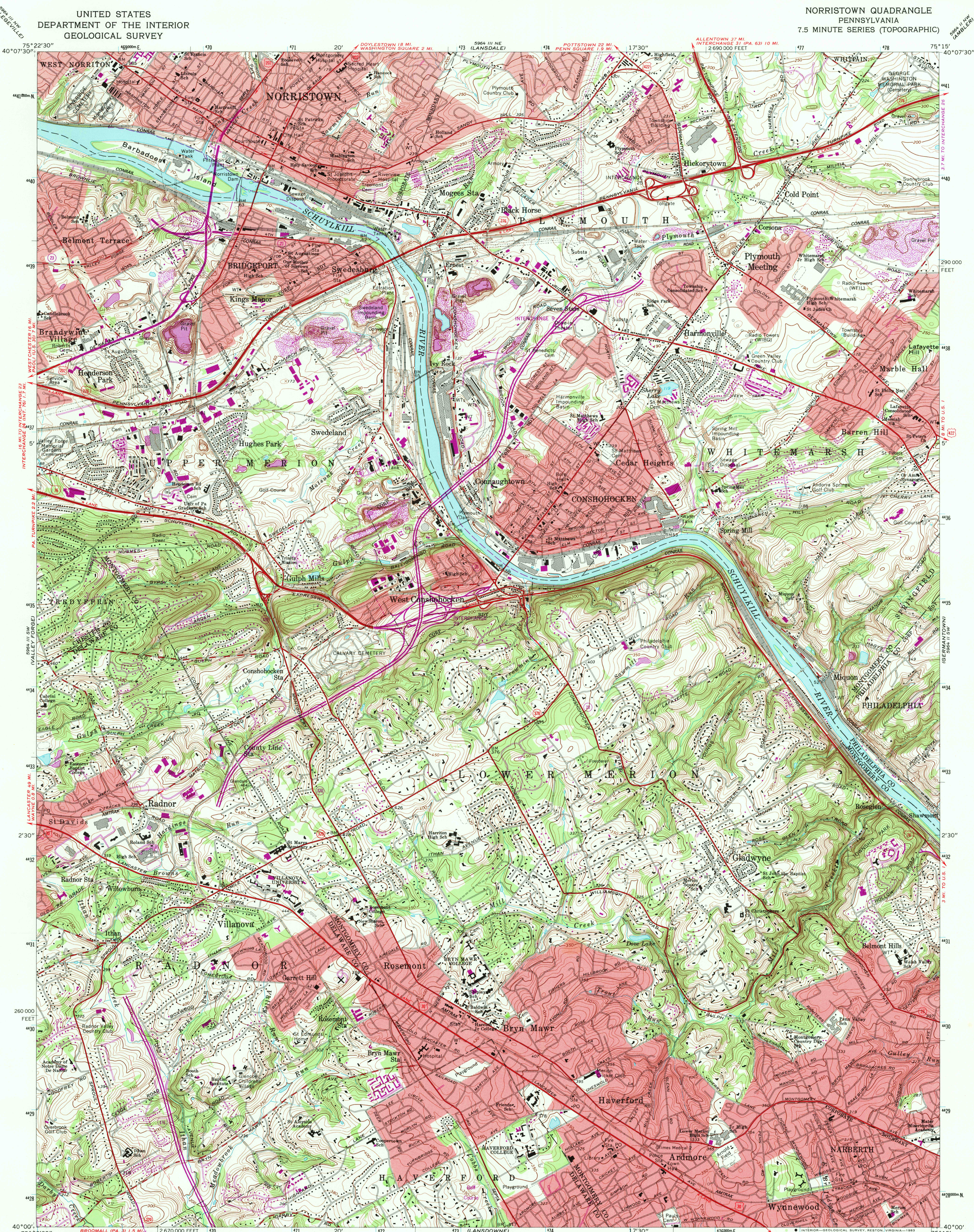


UNITED STATES  
DEPARTMENT OF THE INTERIOR  
GEOLOGICAL SURVEY

NORRISTOWN QUADRANGLE  
PENNSYLVANIA  
7.5 MINUTE SERIES (TOPOGRAPHIC)



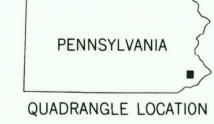
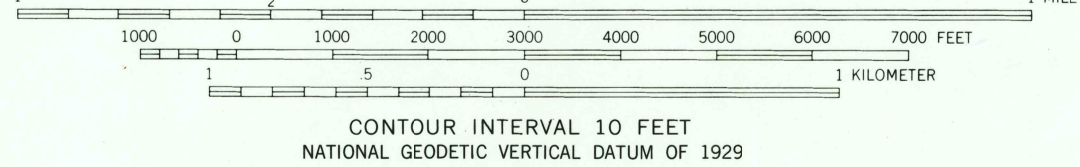
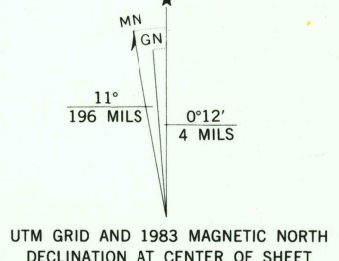
Mapped, edited, and published by the Geological Survey  
in cooperation with Pennsylvania Department of  
Internal Affairs, Topographic and Geologic Survey

Control by USGS, NOS/NOAA, and USCE  
Topography by photogrammetric methods from aerial  
photographs taken 1950. Field checked 1952. Revised  
from aerial photographs taken 1965. Field checked 1966

Polyconic projection. 10,000-foot grid ticks based on Pennsylvania  
coordinate system, south zone. 1000-meter Universal Transverse  
Mercator grid ticks, zone 18, shown in blue  
1927 North American Datum

To place on the predicted North American Datum 1983 move  
the projection lines 6 meters south and 31 meters west as  
shown by dashed corner ticks

Red tint indicates areas in which only landmark buildings are shown



ROAD CLASSIFICATION	
Heavy-duty	Light-duty
Medium-duty	Unimproved dirt
Interstate Route	U.S. Route
	State Route

NORRISTOWN, PA.

40075-A3-TF-024

1966  
PHOTOREVISED 1983  
DMA 5964 III SE-SERIES V831

THIS MAP COMPLIES WITH NATIONAL MAP ACCURACY STANDARDS  
FOR SALE BY U.S. GEOLOGICAL SURVEY, RESTON, VIRGINIA 22092  
A FOLDER DESCRIBING TOPOGRAPHIC MAPS AND SYMBOLS IS AVAILABLE ON REQUEST

Revisions shown in purple and woodland compiled from aerial  
photographs taken 1981 and other sources. This information  
not field checked. Map edited 1983