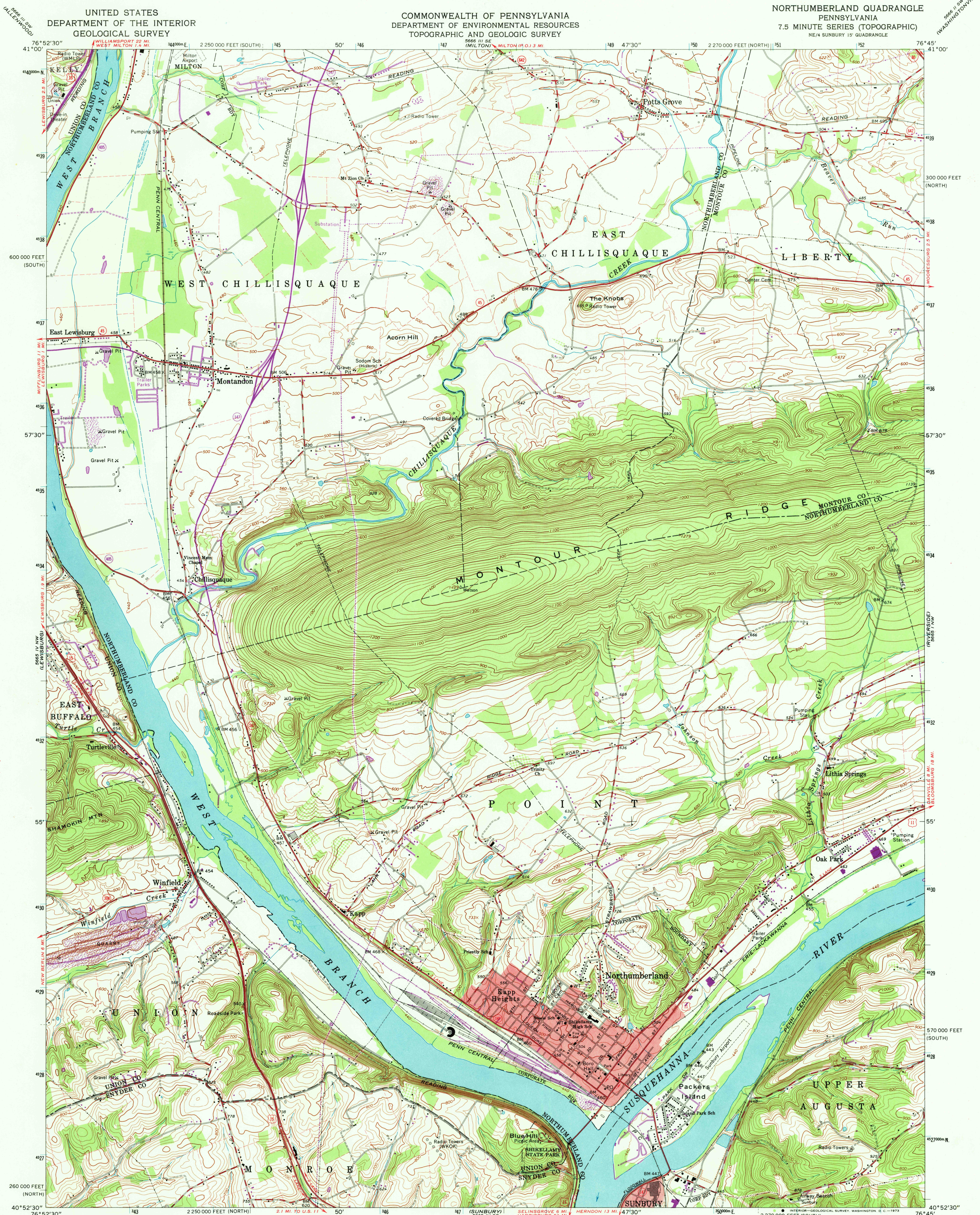


UNITED STATES
DEPARTMENT OF THE INTERIOR
GEOLOGICAL SURVEY

COMMONWEALTH OF PENNSYLVANIA
DEPARTMENT OF ENVIRONMENTAL RESOURCES
TOPOGRAPHIC AND GEOLOGIC SURVEY

NORTHUMBERLAND QUADRANGLE
PENNSYLVANIA
7.5 MINUTE SERIES (TOPOGRAPHIC)
NE/4 SUNBURY 15' QUADRANGLE



Mapped, edited, and published by the Geological Survey

Control by USGS and USC&GS

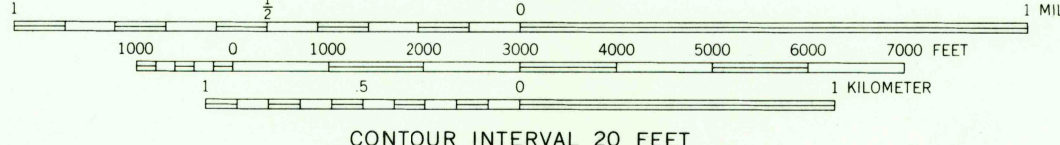
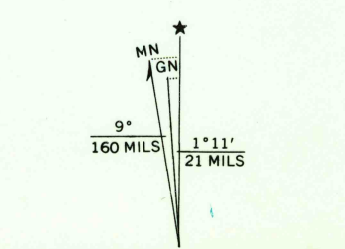
Topography by photogrammetric methods from aerial photographs taken 1962 and 1963. Field checked 1965

Polyconic projection. 1927 North American datum. 10,000-foot grids based on Pennsylvania coordinate system, north and south zones

1000-meter Universal Transverse Mercator grid ticks, zone 18, shown in blue

Fine red dashed lines indicate selected fence and field lines where generally visible on aerial photographs. This information is unchecked

Red tint indicates areas in which only landmark buildings are shown



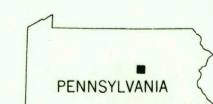
THIS MAP COMPLIES WITH NATIONAL MAP ACCURACY STANDARDS
FOR SALE BY U.S. GEOLOGICAL SURVEY, WASHINGTON, D.C. 20242
A FOLDER DESCRIBING TOPOGRAPHIC MAPS AND SYMBOLS IS AVAILABLE ON REQUEST

ROAD CLASSIFICATION
Heavy-duty ——— Light-duty ———
Medium-duty ——— Unimproved dirt ———
Interstate Route — U.S. Route — State Route

USGS
Historical File
Topographic Division

NORTHUMBERLAND, PA.
NE/4 SUNBURY 15' QUADRANGLE
N4052.5-W7645.7/5

1965
PHOTOREVISED 1973
AMS 5665 IV NE-SERIES V851



Revisions shown in purple compiled in cooperation with
State of Pennsylvania agencies from aerial photographs
taken 1973. This information not field checked