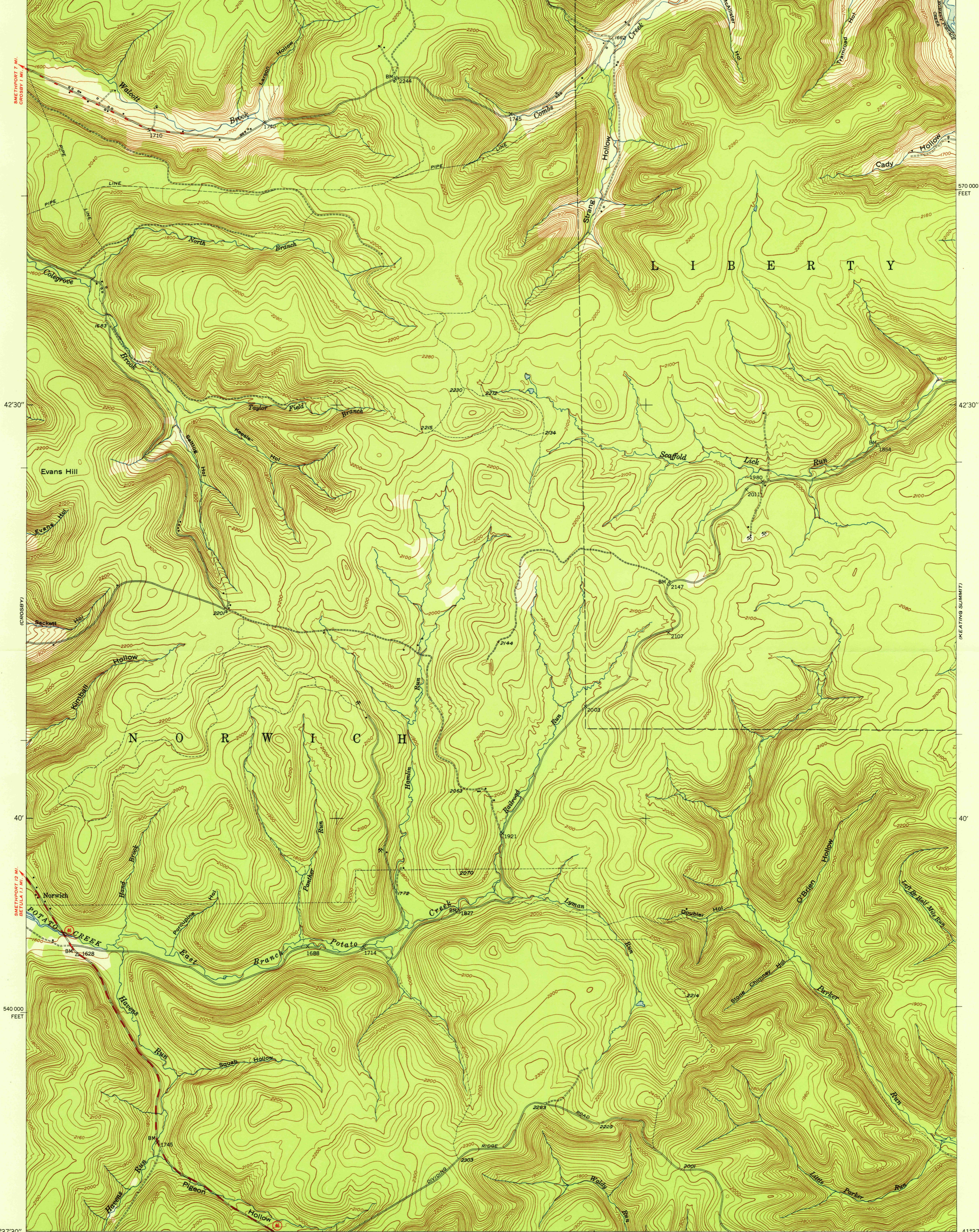
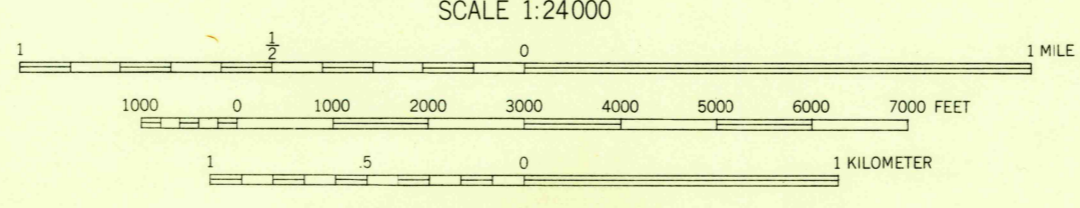


78°22'30" 41°45' 20' 17°30" PORT ALLEGANY 4.9 MI. 1860 000 FEET PORT ALLEGANY 5 MI. 78°15' 41°45'



Mapped, edited, and published by the Geological Survey  
Control by USGS, USC&GS, and Pa. Dept. of Highways  
Topography from aerial photographs by multiplex methods  
Aerial photographs taken 1945. Field check 1948  
Polyconic projection. 1927 North American datum  
10,000-foot grid based on Pennsylvania coordinate system,  
north zone



USGS  
Historical File  
Topographic Division

ROAD CLASSIFICATION  
HARD-SURFACE ALL WEATHER ROADS DRY WEATHER ROADS  
Heavy-duty **LANE IS LANE** Improved dirt  
Medium-duty **LANE IS LANE** Unimproved dirt  
Loose-surface, graded, or narrow hard-surface  
U. S. Route State Route

TRUE NORTH  
MAGNETIC NORTH  
APPROXIMATE MEAN  
DECLINATION, 1948

THIS MAP COMPLIES WITH NATIONAL MAP ACCURACY STANDARDS  
FOR SALE BY U. S. GEOLOGICAL SURVEY, WASHINGTON 25, D. C.  
A FOLDER DESCRIBING TOPOGRAPHIC MAPS AND SYMBOLS IS AVAILABLE ON REQUEST