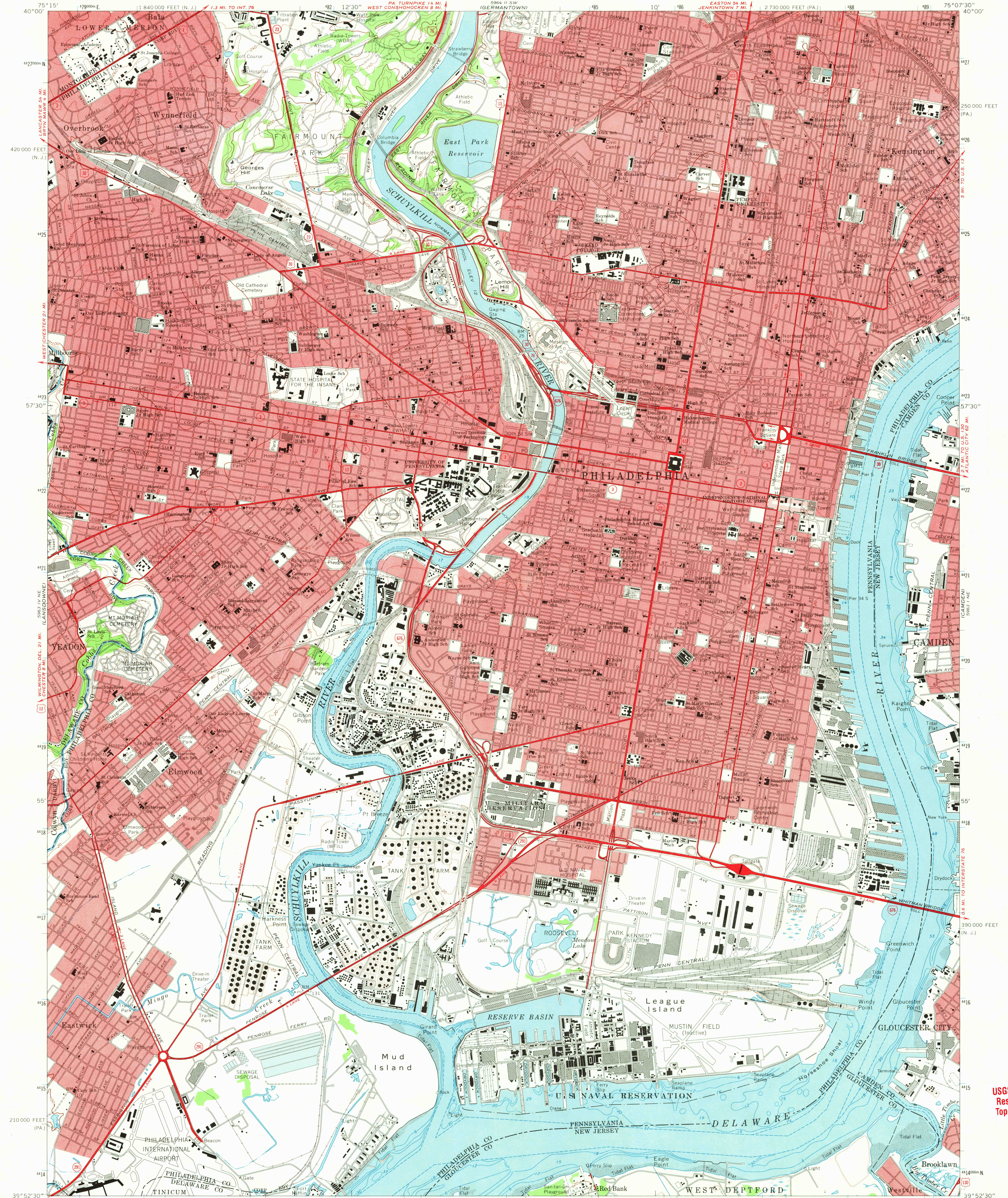


UNITED STATES  
DEPARTMENT OF THE INTERIOR  
GEOLOGICAL SURVEY

PHILADELPHIA QUADRANGLE  
PENNSYLVANIA-NEW JERSEY  
7.5 MINUTE SERIES (TOPOGRAPHIC)



Map by the U. S. Coast & Geodetic Survey  
Edited and published by the Geological Survey  
Control by USGS, USC&GS, and USCE  
Planimetry by photogrammetric methods from aerial photographs  
taken 1946. Topography by planimetric surveys 1947. Revised by the  
Geological Survey from aerial photographs taken 1965. Field  
checked 1967  
Selected hydrographic data compiled from USC&GS Chart 280 (1967)  
This information is not intended for navigational purposes  
Polyconic projection. 1927 North American datum  
10,000-foot grids based on Pennsylvania coordinate system, south zone,  
and New Jersey coordinate system  
1000-meter Universal Transverse Mercator grid ticks, zone 18,  
shown in blue  
Red tint indicates areas in which only landmark buildings are shown

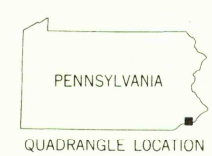
UTM GRID AND 1967 MAGNETIC NORTH  
DECLINATION AT CENTER OF SHEET



CONTOUR INTERVAL 20 FEET  
DATUM IS MEAN SEA LEVEL  
DEPTH CURVES AND SOUNDINGS IN FEET—DATUM IS MEAN LOW WATER  
SHORELINE SHOWN REPRESENTS THE APPROXIMATE LINE OF MEAN HIGH WATER  
THE MEAN RANGE OF TIDE IS APPROXIMATELY 5.8 FEET

THIS MAP COMPLIES WITH NATIONAL MAP ACCURACY STANDARDS  
FOR SALE BY U. S. GEOLOGICAL SURVEY, WASHINGTON, D. C. 20242  
A FOLDER DESCRIBING TOPOGRAPHIC MAPS AND SYMBOLS IS AVAILABLE ON REQUEST

USGS  
HISTORICAL FILE  
TOPOGRAPHIC DIVISION



U.S.G.S.  
FINE COPY  
TOPOGRAPHIC DIVISION

ROAD CLASSIFICATION  
Heavy-duty ——— Light-duty ———  
Medium-duty ——— Unimproved dirt ———  
Interstate Route U. S. Route State Route

PHILADELPHIA, PA. — N. J.  
N 3952.5 — W 7507.5 / 7.5

1967  
AMS 5963 1 NW—SERIES V831

USGS Library  
Reston, VA.  
Topo Archive

JUN 11 1970