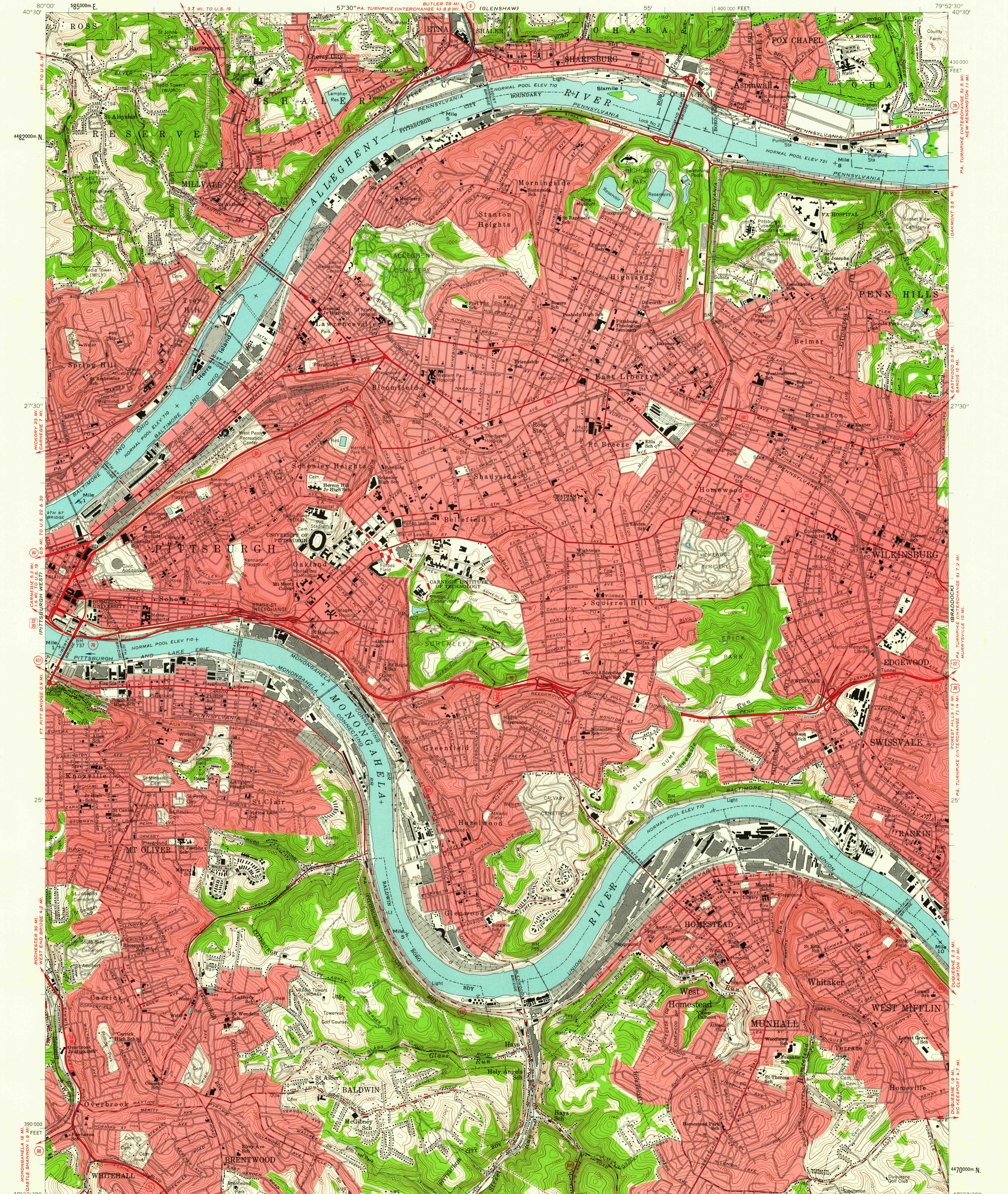
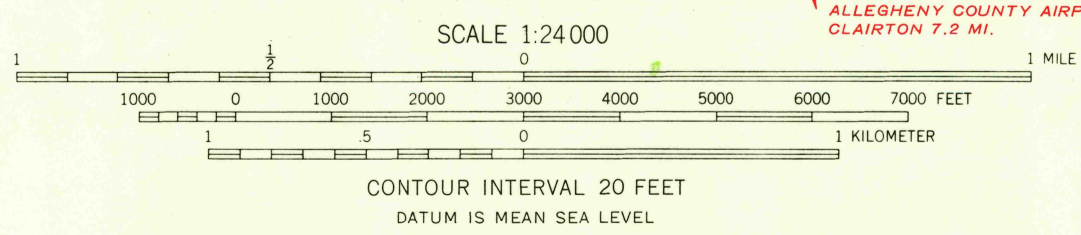


UNITED STATES  
DEPARTMENT OF THE INTERIOR  
GEOLOGICAL SURVEY

PITTSBURGH EAST QUADRANGLE  
PENNSYLVANIA—ALLEGHENY CO.  
7.5 MINUTE SERIES (TOPOGRAPHIC)  
NW 1/4 PITTSBURGH 15' QUADRANGLE

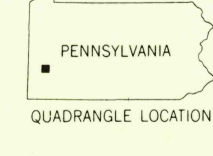


Mapped, edited, and published by the Geological Survey  
Control by USGS, USC&GS, USCE, and the City of Pittsburgh  
Topography by planetable surveys 1925-1941, and 1948  
Culture revised by photogrammetric methods from aerial  
photographs taken 1959. Field check 1960  
Polyconic projection. 1927 North American datum  
10,000-foot grid based on Pennsylvania coordinate system, south zone  
1000-meter Universal Transverse Mercator grid ticks,  
zone 17, shown in blue  
Red tint indicates areas in which only landmark buildings are shown



USGS  
HISTORICAL FILE  
TOPOGRAPHIC DIVISION

ROAD CLASSIFICATION	
Heavy-duty	Light-duty
Medium-duty	Unimproved dirt
Interstate Route	U.S. Route
	State Route



PITTSBURGH EAST, PA.  
NW 1/4 PITTSBURGH 15' QUADRANGLE  
N 4022.5-W 7952.5/7.5

1960

THIS MAP COMPLIES WITH NATIONAL MAP ACCURACY STANDARDS  
FOR SALE BY U. S. GEOLOGICAL SURVEY, WASHINGTON 25, D. C.  
A FOLDER DESCRIBING TOPOGRAPHIC MAPS AND SYMBOLS IS AVAILABLE ON REQUEST

4045  
MAY - 8 1961