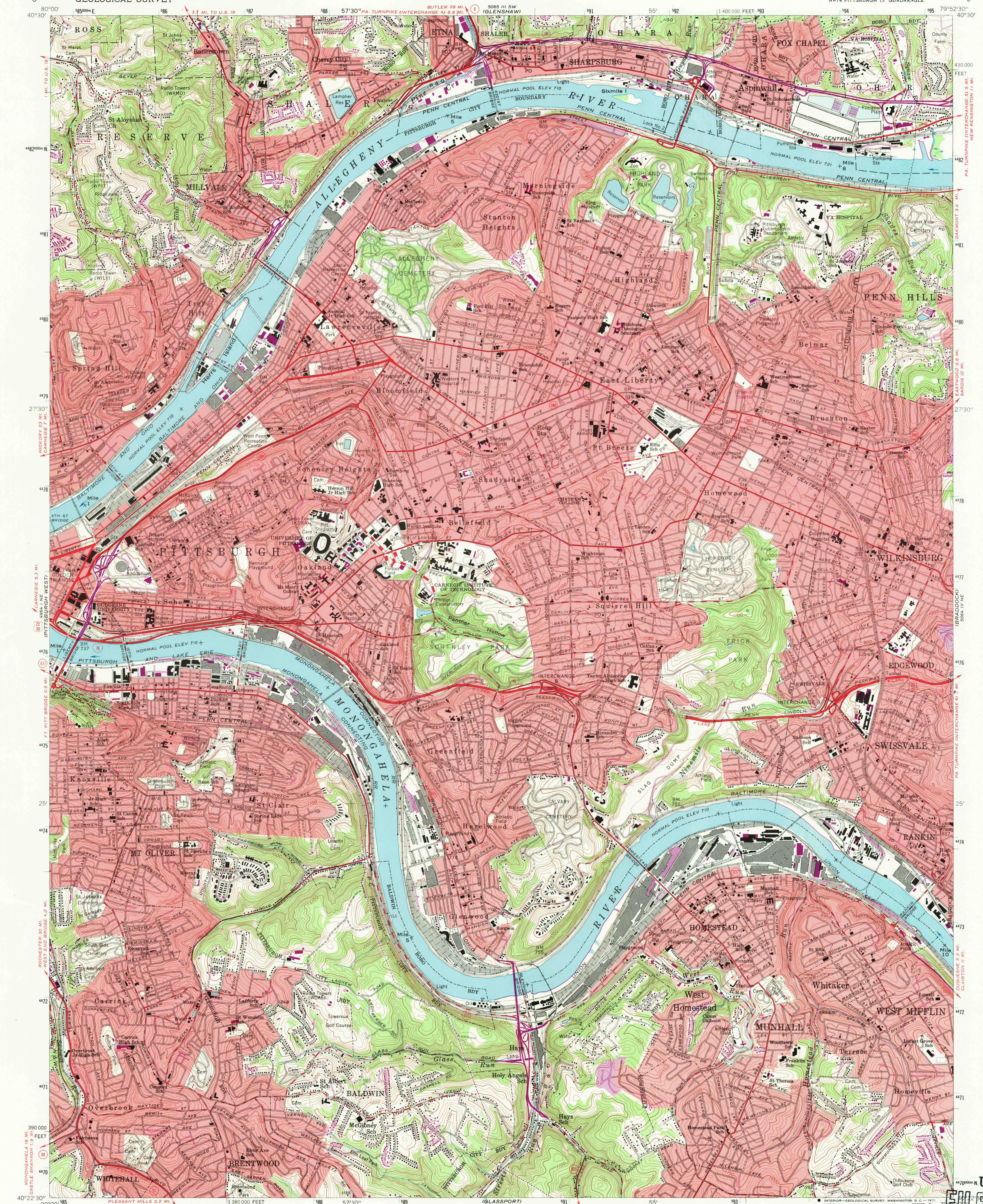
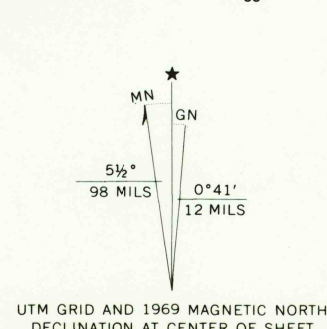


UNITED STATES
DEPARTMENT OF THE INTERIOR
GEOLOGICAL SURVEY

PITTSBURGH EAST QUADRANGLE
PENNSYLVANIA—ALLEGHENY CO.
7.5 MINUTE SERIES (TOPOGRAPHIC)
NW/4 PITTSBURGH 15' QUADRANGLE

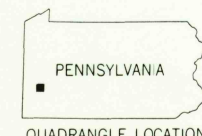


Mapped, edited, and published by the Geological Survey
Control by USGS, USC&GS, USCE, and the City of Pittsburgh
Topography by planetable surveys 1925-1941, and 1948
Culture revised by photogrammetric methods from aerial
photographs taken 1959. Field check 1960
Polyconic projection. 1927 North American datum
10,000-foot grid based on Pennsylvania coordinate system, south zone
1000-meter Universal Transverse Mercator grid ticks,
zone 17, shown in blue
Red tint indicates areas in which only landmark buildings are shown
Revisions shown in purple compiled from aerial
photographs taken 1969. This information not
field checked
Purple tint indicates extension of urban areas



SCALE 1:24,000
CONTOUR INTERVAL 20 FEET
DATUM IS MEAN SEA LEVEL

USGS
HISTORICAL FILE
TOPOGRAPHIC DIVISION



ROAD CLASSIFICATION
Heavy-duty ——— Light-duty ———
Medium-duty ——— Unimproved dirt ———
Interstate Route U.S. Route State Route

PITTSBURGH EAST, PA.
NW/4 PITTSBURGH 15' QUADRANGLE
N 4022.5-W 7952.5/7.5
1960
PHOTOREVISED 1969
AMS 5064 IV NW-SERIES V831

JUN 15 1971