

2007 1 NE
COLUMBUS

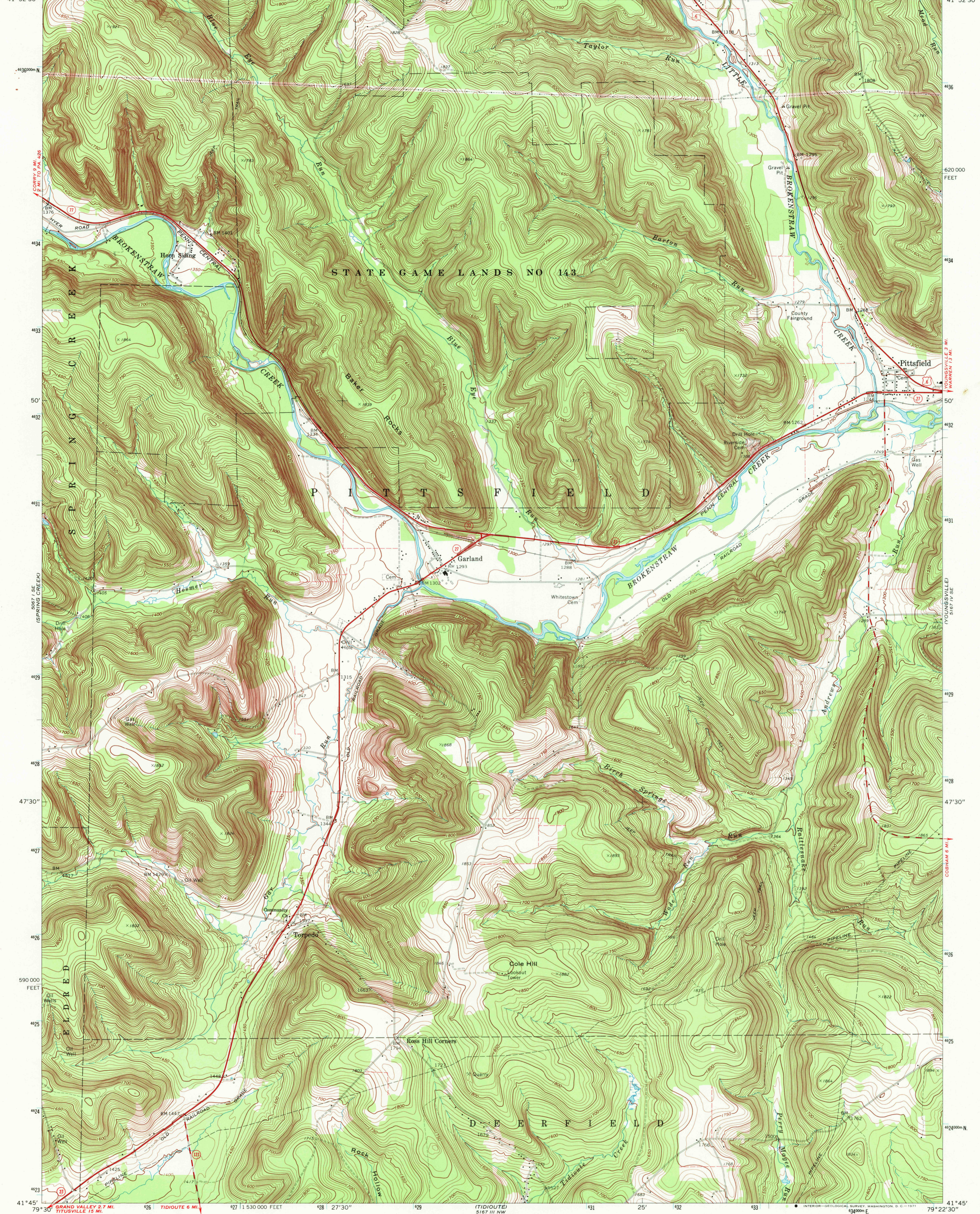
UNITED STATES
DEPARTMENT OF THE INTERIOR
GEOLOGICAL SURVEY

COMMONWEALTH OF PENNSYLVANIA
STATE PLANNING BOARD
TOPOGRAPHIC AND GEOLOGIC SURVEY

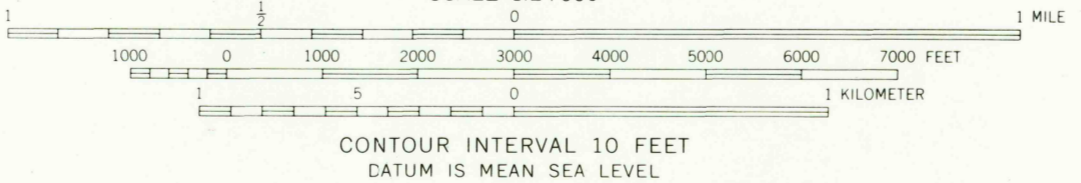
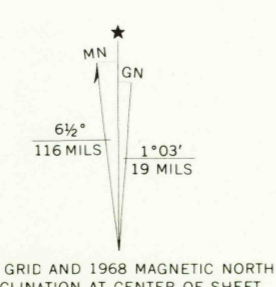
PITTSFIELD QUADRANGLE
PENNSYLVANIA—WARREN CO.
7.5 MINUTE SERIES (TOPOGRAPHIC)
SW/4 YOUNGVILLE 15' QUADRANGLE

2007 1 NE
COLUMBUS

79° 30' 15" W 79° 22' 30" W 79° 15' 00" W 79° 7' 30" W 79° 0' 00" W
41° 52' 30" N 41° 45' 00" N 41° 37' 30" N 41° 30' 00" N 41° 22' 30" N 41° 15' 00" N 41° 7' 30" N 41° 0' 00" N



Mapped, edited, and published by the Geological Survey
Control by USGS and USC&GS
Topography by photogrammetric methods from aerial
photographs taken 1966. Field checked 1968
Polyconic projection. 1927 North American datum
10,000-foot grid based on Pennsylvania coordinate system, north zone
1000-meter Universal Transverse Mercator grid ticks,
zone 17, shown in blue
Fine red dashed lines indicate selected fence and field lines where
generally visible on aerial photographs. This information is unchecked



USGS
HISTORICAL FILE
TOPOGRAPHIC DIVISION

ROAD CLASSIFICATION	
Primary highway, all weather, hard surface	Light duty road, all weather, improved surface
Secondary highway, all weather, hard surface	Unimproved road, fair or dry weather
U. S. Route	State Route



PITTSFIELD, PA.
SW/4 YOUNGVILLE 15' QUADRANGLE
N4145—W7922.5/7.5
1968

NOV 11 1971

2830

THIS MAP COMPLIES WITH NATIONAL MAP ACCURACY STANDARDS
FOR SALE BY U. S. GEOLOGICAL SURVEY, WASHINGTON, D. C. 20242
A FOLDER DESCRIBING TOPOGRAPHIC MAPS AND SYMBOLS IS AVAILABLE ON REQUEST

AMS 5167 IV SW—SERIES V831
USGS
HISTORICAL FILE
TOPOGRAPHIC DIVISION