

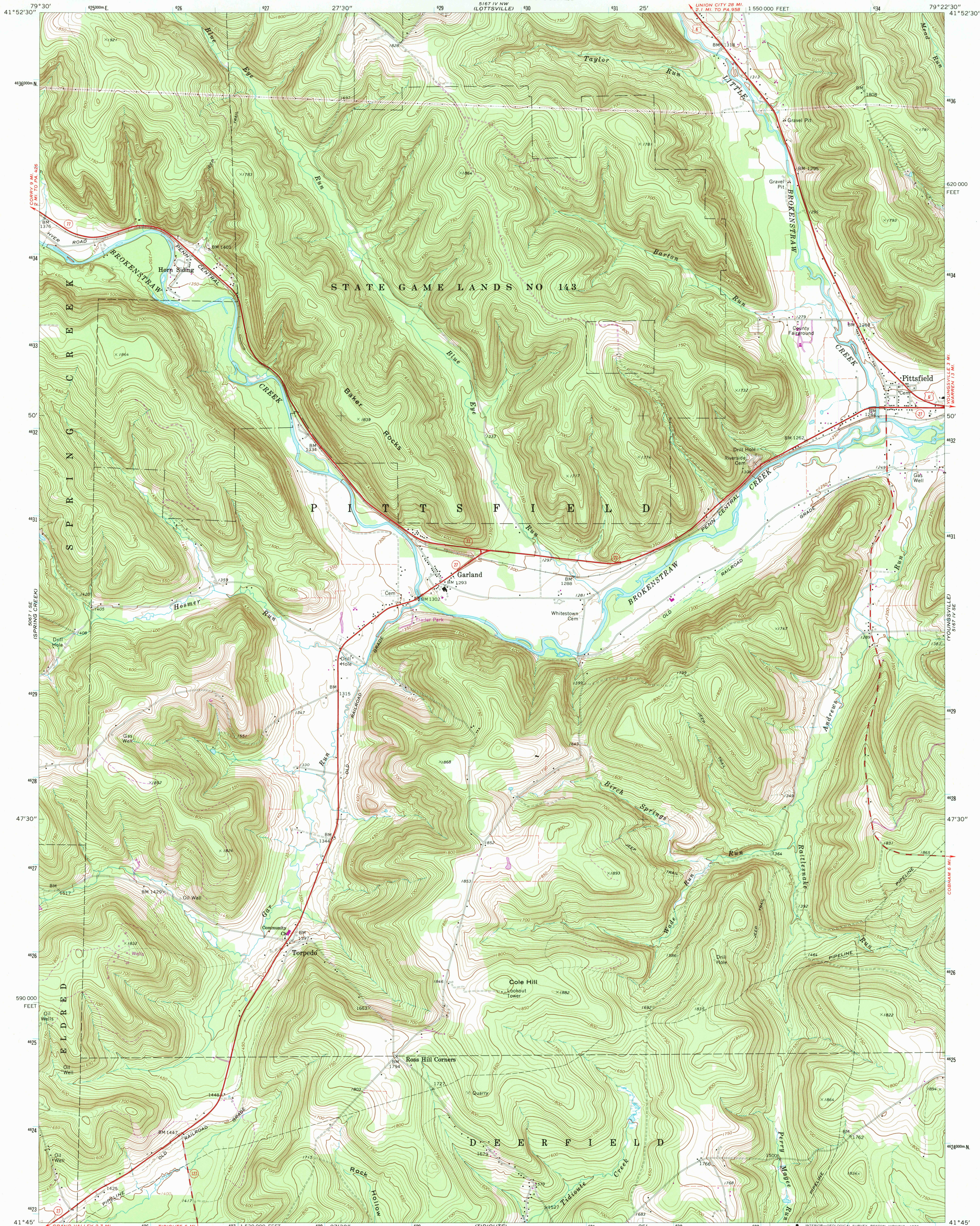
5897.1 NE  
COLUMBUS

UNITED STATES  
DEPARTMENT OF THE INTERIOR  
GEOLOGICAL SURVEY

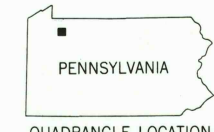
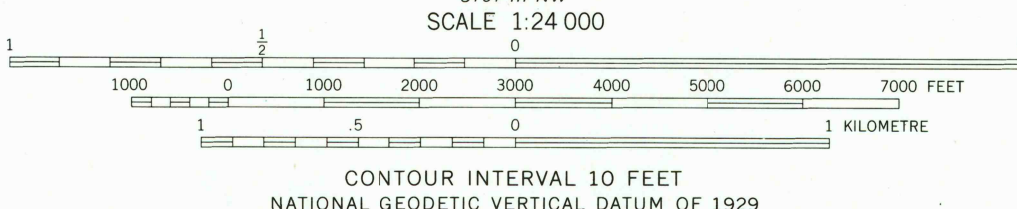
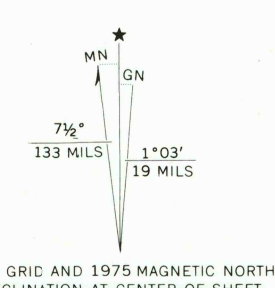
COMMONWEALTH OF PENNSYLVANIA  
DEPARTMENT OF ENVIRONMENTAL RESOURCES  
TOPOGRAPHIC AND GEOLOGIC SURVEY

PITTSFIELD QUADRANGLE  
PENNSYLVANIA—WARREN CO.  
7.5 MINUTE SERIES (TOPOGRAPHIC)

5827.1 NE  
BUBER GROVE



Mapped, edited, and published by the Geological Survey  
Control by USGS and USC&GS  
Topography by photogrammetric methods from aerial  
photographs taken 1966. Field checked 1968  
Polyconic projection. 1927 North American datum  
10,000-foot grid based on Pennsylvania coordinate system, north zone  
1000-metre Universal Transverse Mercator grid ticks,  
zone 17, shown in blue  
Fine red dashed lines indicate selected fence and field lines where  
generally visible on aerial photographs. This information is unchecked



ROAD CLASSIFICATION

Primary highway, all weather, hard surface	Light-duty road, all weather, improved surface
Secondary highway, all weather, hard surface	Unimproved road, fair or dry weather
U. S. Route	State Route

PITTSFIELD, PA.  
N4145—W7922.5/7.5  
1968  
PHOTOREVISED 1975  
AMS 5167 IV SW—SERIES V831

THIS MAP COMPLIES WITH NATIONAL MAP ACCURACY STANDARDS  
FOR SALE BY U. S. GEOLOGICAL SURVEY, RESTON, VIRGINIA 22092  
A FOLDER DESCRIBING TOPOGRAPHIC MAPS AND SYMBOLS IS AVAILABLE ON REQUEST

Revisions shown in purple compiled in cooperation with  
State of Pennsylvania agencies from aerial photographs  
taken 1975. This information not field checked.

PITTSFIELD  
0-607-46516-6 PA 024  
TF  
9 788697485167