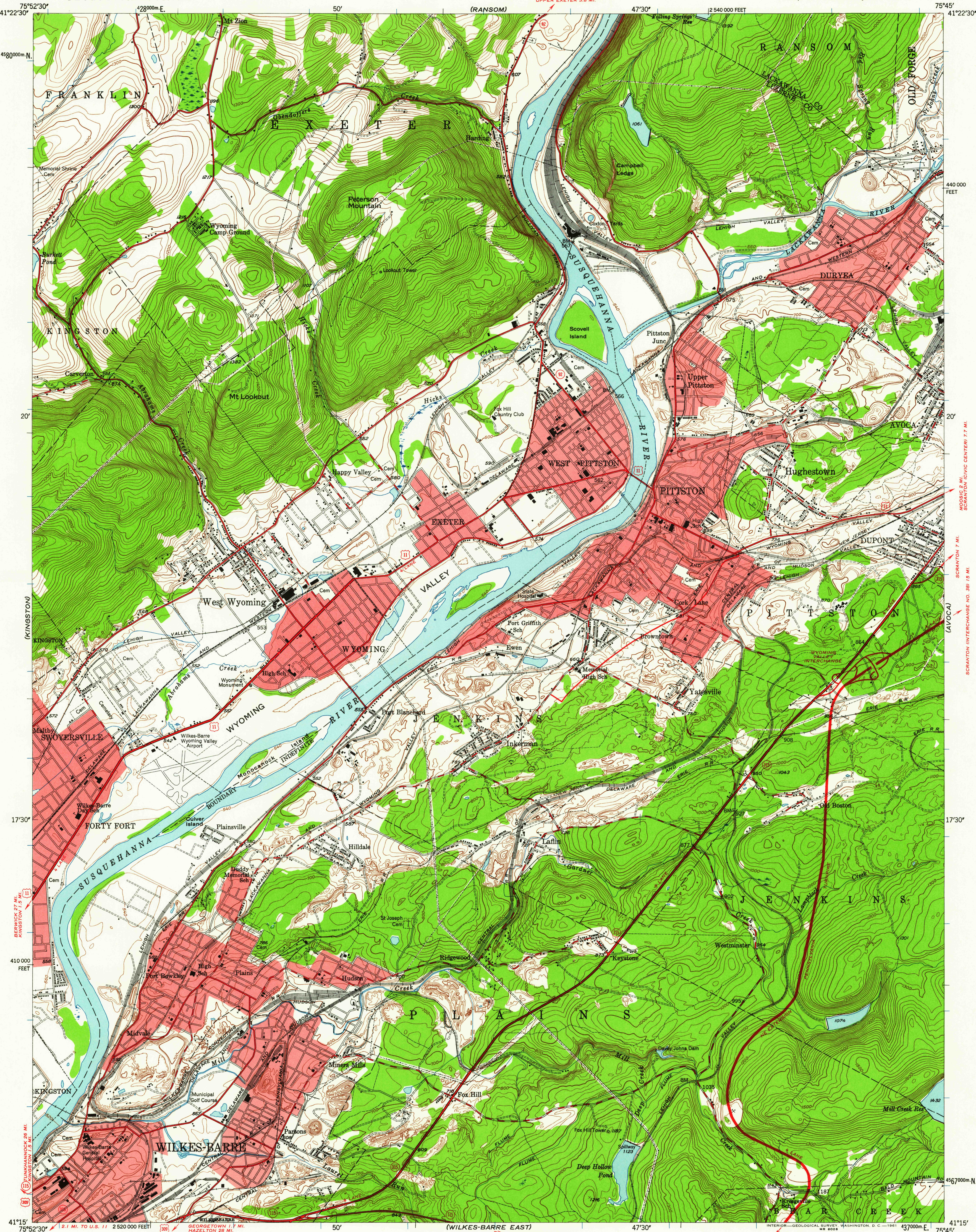


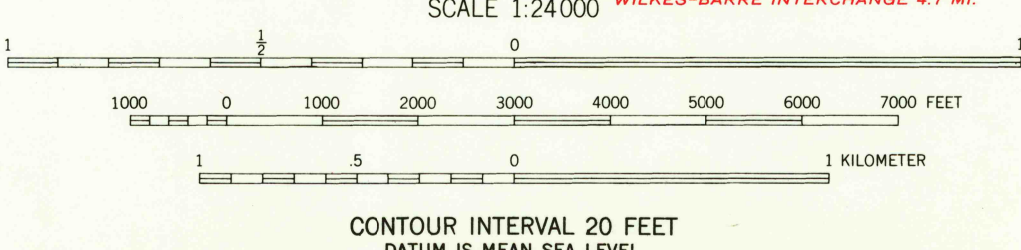
UNITED STATES
DEPARTMENT OF THE INTERIOR
GEOLOGICAL SURVEY

PITTSSTON QUADRANGLE
PENNSYLVANIA
7.5 MINUTE SERIES (TOPOGRAPHIC)
SE 1/4 15' PITTSSTON QUADRANGLE

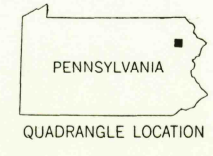


Mapped, edited, and published by the Geological Survey
Control by USGS, USC&GS, and USED
Topography from aerial photographs by multiplex methods
Aerial photographs taken 1942. Field check 1947
Polyconic projection, 1927 North American datum
10,000-foot grid based on Pennsylvania coordinate system,
north zone
Red tint indicates areas in which only
landmark buildings are shown
Contours in strip mine areas compiled from 1942 photography
1000-meter Universal Transverse Mercator grid ticks,
zone 18, shown in blue

APPROXIMATE MEAN
DECLINATION, 1947



USGS
HISTORICAL FILE
TOPOGRAPHIC DIVISION



ROAD CLASSIFICATION
Heavy-duty ——— Light-duty ———
Medium-duty ——— Unimproved dirt ———
U.S. Route ——— State Route ———

PITTSSTON, PA.
SE 1/4 15' PITTSSTON QUADRANGLE
N4115-W7545/7.5

1947

THIS MAP COMPLIES WITH NATIONAL MAP ACCURACY STANDARDS
FOR SALE BY U. S. GEOLOGICAL SURVEY, WASHINGTON 25, D. C.
A FOLDER DESCRIBING TOPOGRAPHIC MAPS AND SYMBOLS IS AVAILABLE ON REQUEST

USGS
FILE COPY
TOPOGRAPHIC DIVISION

JUL 26 1961

3545