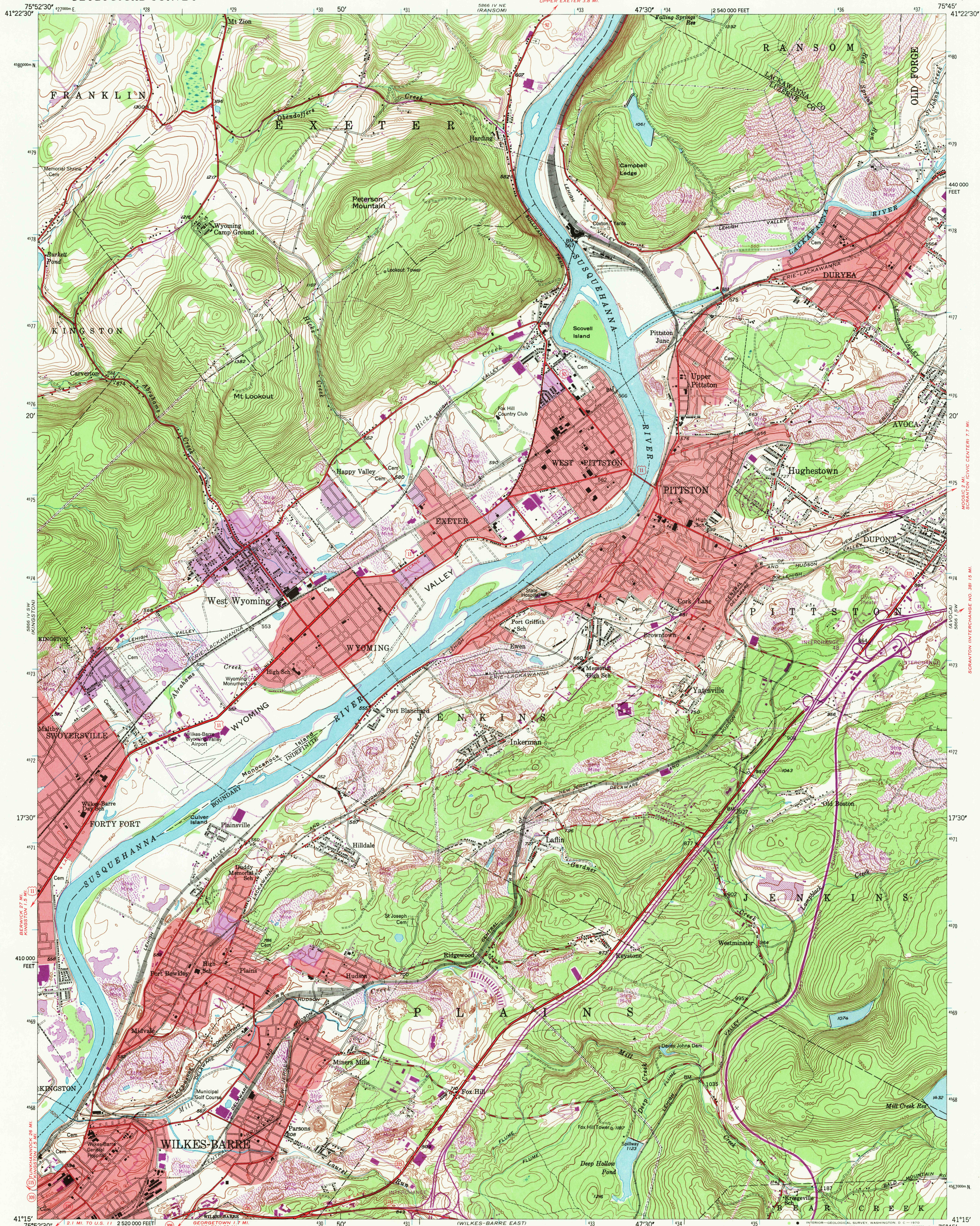


UNITED STATES  
DEPARTMENT OF THE INTERIOR  
GEOLOGICAL SURVEY

PITTSBURGH QUADRANGLE  
PENNSYLVANIA  
7.5 MINUTE SERIES (TOPOGRAPHIC)



Mapped, edited, and published by the Geological Survey

Control by USGS, USC&GS, and USCE

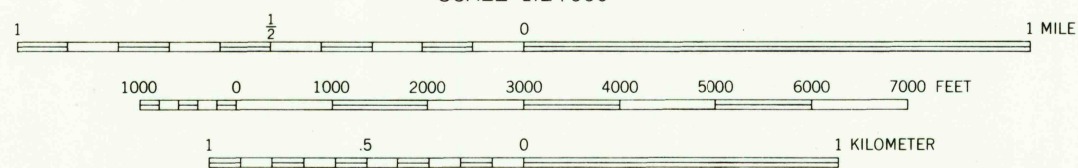
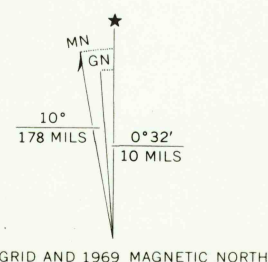
Topography by photogrammetric methods from aerial photographs taken 1942. Field checked 1947

Polyconic projection, 1927 North American datum  
10,000-foot grid based on Pennsylvania coordinate system, north zone  
1000-meter Universal Transverse Mercator grid ticks, zone 18, shown in blue

Red tint indicates areas in which only landmark buildings are shown

Revisions shown in purple compiled in cooperation with  
State of Pennsylvania agencies, from aerial photographs taken 1969  
This information not field checked

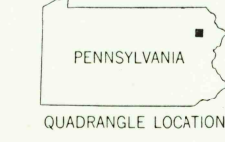
Purple tint indicates extension of urban areas



CONTOUR INTERVAL 20 FEET  
DATUM IS MEAN SEA LEVEL

THIS MAP COMPLIES WITH NATIONAL MAP ACCURACY STANDARDS  
FOR SALE BY U.S. GEOLOGICAL SURVEY, WASHINGTON, D. C. 20242  
A FOLDER DESCRIBING TOPOGRAPHIC MAPS AND SYMBOLS IS AVAILABLE ON REQUEST

USGS  
HISTORICAL FILE  
TOPOGRAPHIC DIVISION



QUADRANGLE LOCATION

ROAD CLASSIFICATION  
Heavy-duty ——— Light-duty ———  
Medium-duty ——— Unimproved dirt ———  
Interstate Route ——— U.S. Route ——— State Route ———

U.S.G.S.

FILE COPY  
TOPOGRAPHIC DIVISION

PITTSBURGH, PA.

N4115-W7545/7.5

1947  
PHOTOREVISED 1969  
AMS 5866 IV SE-SERIES V831

MAR 12 1970