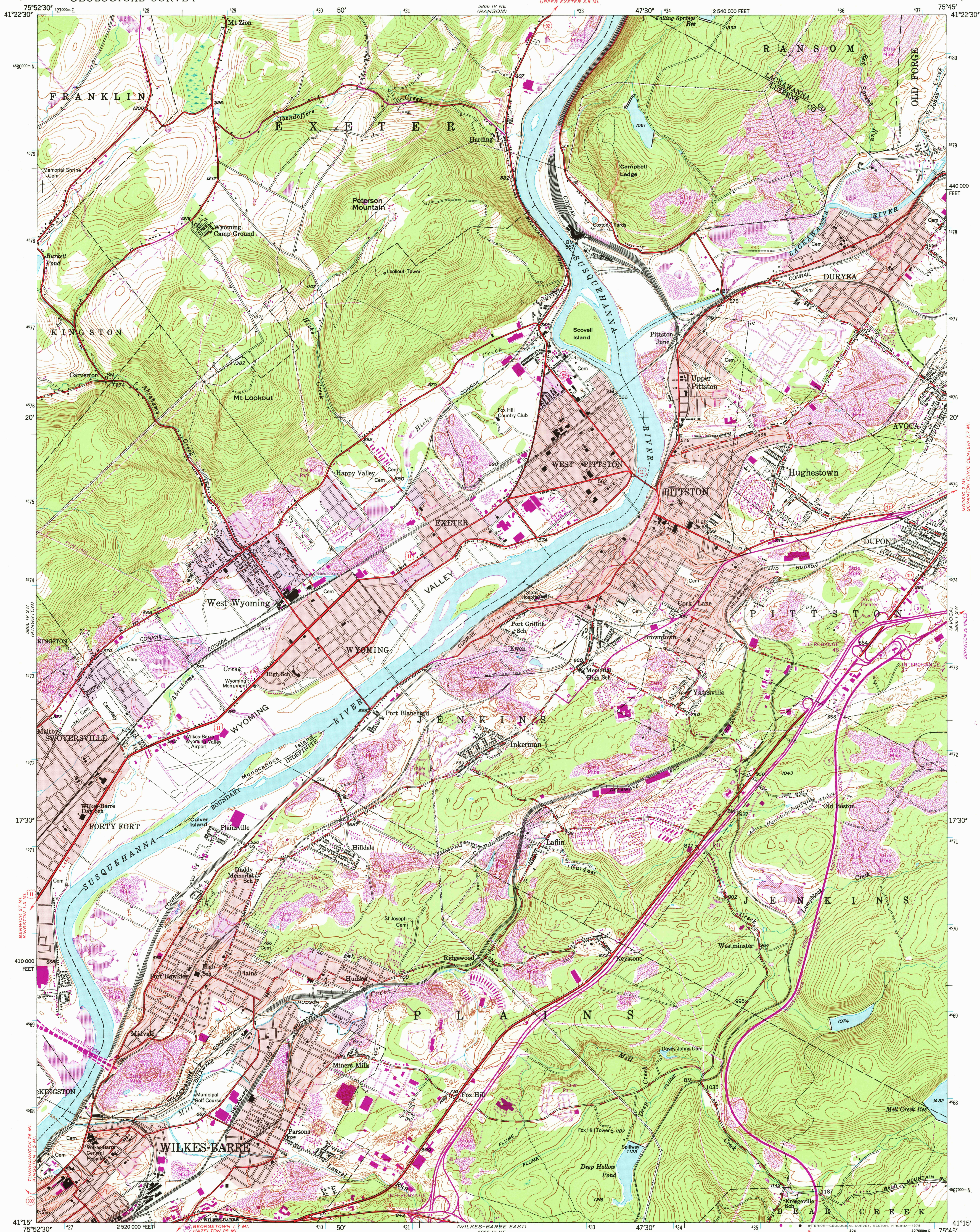


UNITED STATES
DEPARTMENT OF THE INTERIOR
GEOLOGICAL SURVEY

PITTSBURGH QUADRANGLE
PENNSYLVANIA
7.5 MINUTE SERIES (TOPOGRAPHIC)



Maped, edited, and published by the Geological Survey
Control by USGS, USC&GS, and USCE

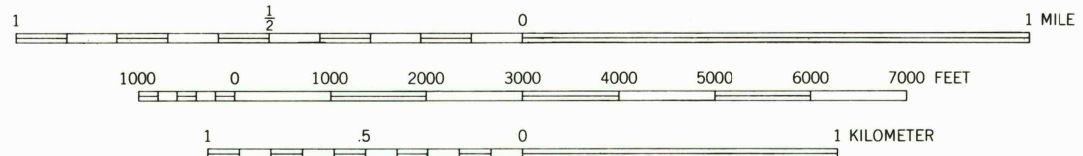
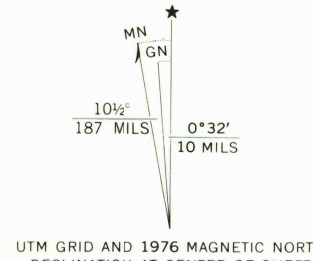
Topography by photogrammetric methods from aerial photographs
taken 1942. Field checked 1947

Polyconic projection. 1927 North American datum
10,000-foot grid based on Pennsylvania coordinate system, north zone
1000-meter Universal Transverse Mercator grid ticks, zone 18,
shown in blue

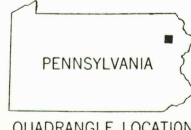
Red tint indicates areas in which only landmark buildings are shown

Revisions shown in purple compiled in cooperation with
State of Pennsylvania agencies, from aerial photographs
taken 1969 and 1976. This information not field checked

Purple tint indicates extension of urban areas



CONTOUR INTERVAL 20 FEET
NATIONAL GEODETIC VERTICAL DATUM OF 1929
THIS MAP COMPLIES WITH NATIONAL MAP ACCURACY STANDARDS
FOR SALE BY U.S. GEOLOGICAL SURVEY, RESTON, VIRGINIA 22092
A FOLDER DESCRIBING TOPOGRAPHIC MAPS AND SYMBOLS IS AVAILABLE ON REQUEST



ROAD CLASSIFICATION
Heavy-duty ——— Light-duty ———
Medium-duty ——— Unimproved dirt ———
Interstate Route ——— U.S. Route ——— State Route ———

USGS
Historical File
Topographic Division

PITTSBURGH, PA. AUG 17 1978

N4115-W7545/7.5

1947
PHOTOREVISED 1969 AND 1976
AMS 5866 IV SE—SERIES V831