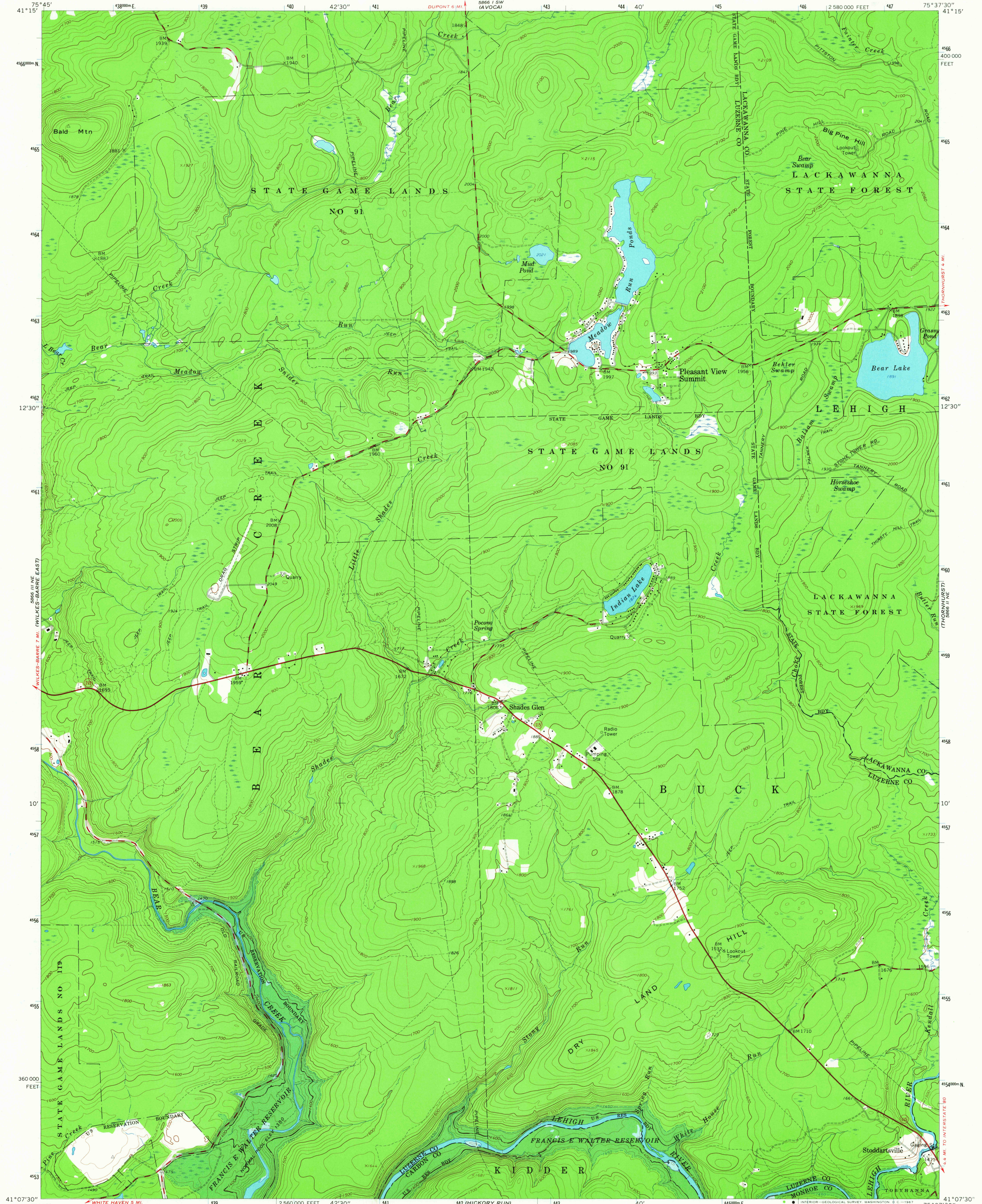
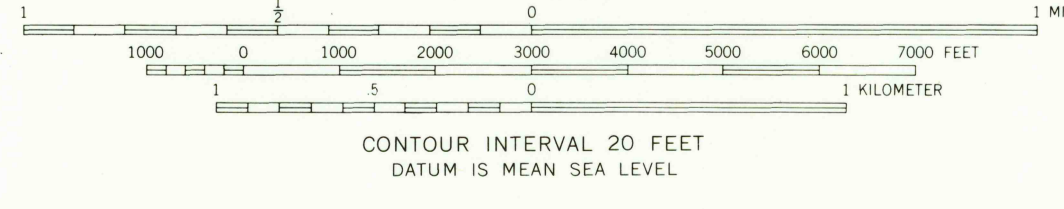
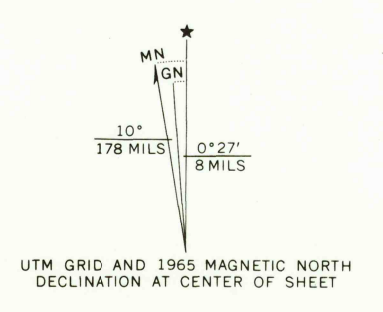


5866 III SE
WILKES-BAHRE
7.5 MI.

5866 I SW
WILKES-BAHRE
7.5 MI.



Mapped, edited, and published by the Geological Survey
Control by USGS and USC&GS
Topography by photogrammetric methods from aerial photographs
taken 1963. Field checked 1965
Polyconic projection, 1927 North American datum
10,000-foot grid based on Pennsylvania coordinate system, north zone
1000-meter Universal Transverse Mercator grid ticks,
zone 18, shown in blue
Fine red dashed lines indicate selected fence and field lines where
generally visible on aerial photographs. This information is unchecked
U.S. reservation boundary from maps by U.S. Corps of Engineers
Areas covered by cashed light-blue pattern
are subject to controlled inundation



THIS MAP COMPLIES WITH NATIONAL MAP ACCURACY STANDARDS
FOR SALE BY U.S. GEOLOGICAL SURVEY, WASHINGTON, D. C. 20242
A FOLDER DESCRIBING TOPOGRAPHIC MAPS AND SYMBOLS IS AVAILABLE ON REQUEST

U.S.G.S.
TOPOGRAPHIC DIVISION
FILE COPY

ROAD CLASSIFICATION
Heavy-duty ——— Light-duty ———
Medium-duty ——— Unimproved dirt - - - - -
○ State Route

PLEASANT VIEW SUMMIT, PA.
NW/4 STODDARTSVILLE 15' QUADRANGLE
N4107.5—W7537.5/7.5
1965
AMS 5866 II NW—SERIES V831

4005
DEC 17 1967