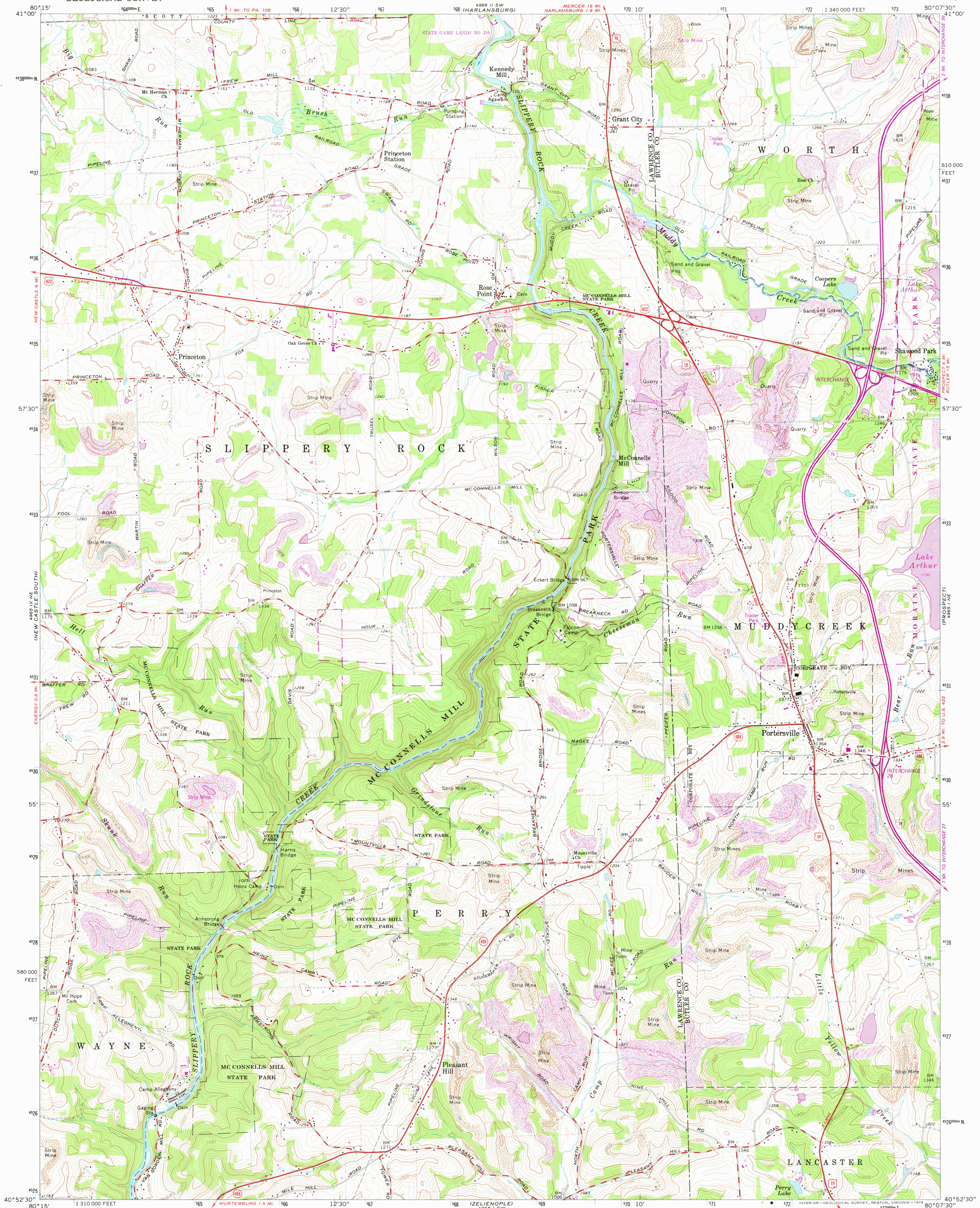
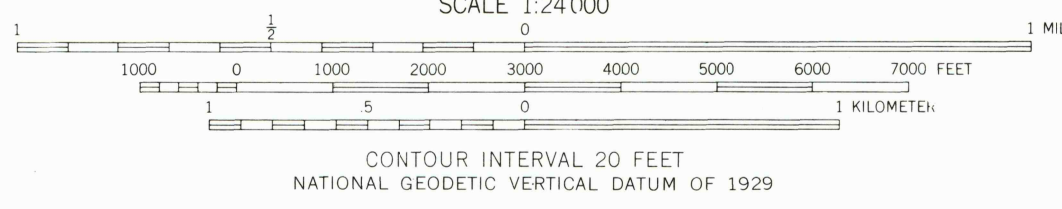
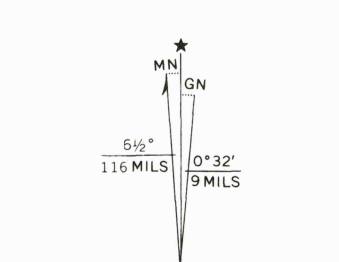


UNITED STATES
DEPARTMENT OF THE INTERIOR
GEOLOGICAL SURVEY

PORTERSVILLE QUADRANGLE
PENNSYLVANIA
7.5 MINUTE SERIES (TOPOGRAPHIC)



Mapped, edited, and published by the Geological Survey
Control by USGS and USC&GS
Topography by photogrammetric methods from aerial
photographs taken 1958. Field checked 1961
Polyconic projection. 1927 North American datum
10,000-foot grid based on Pennsylvania coordinate system, south zone
1000-meter Universal Transverse Mercator grid ticks,
zone 17, shown in blue
Fine red dashed lines indicate selected fence and field lines where
generally visible on aerial photographs. This information is unchecked
There may be private inholdings within the boundaries of
the National or State reservations shown on this map
Revisions shown in purple compiled in cooperation with State of
Pennsylvania agencies from aerial photographs taken 1977 and other
source data. This information not field checked. Map edited 1979



ROAD CLASSIFICATION

Heavy-duty	Light-duty
Medium-duty	Unimproved dirt

U.S. Route State Route
Interstate Route

PORTERSVILLE, PA.
N4052.5—W8007.5/7.5
1961
PHOTOREVISED 1979
AMS 4965 1 NW—SERIES V851

APR 18 1982
3250