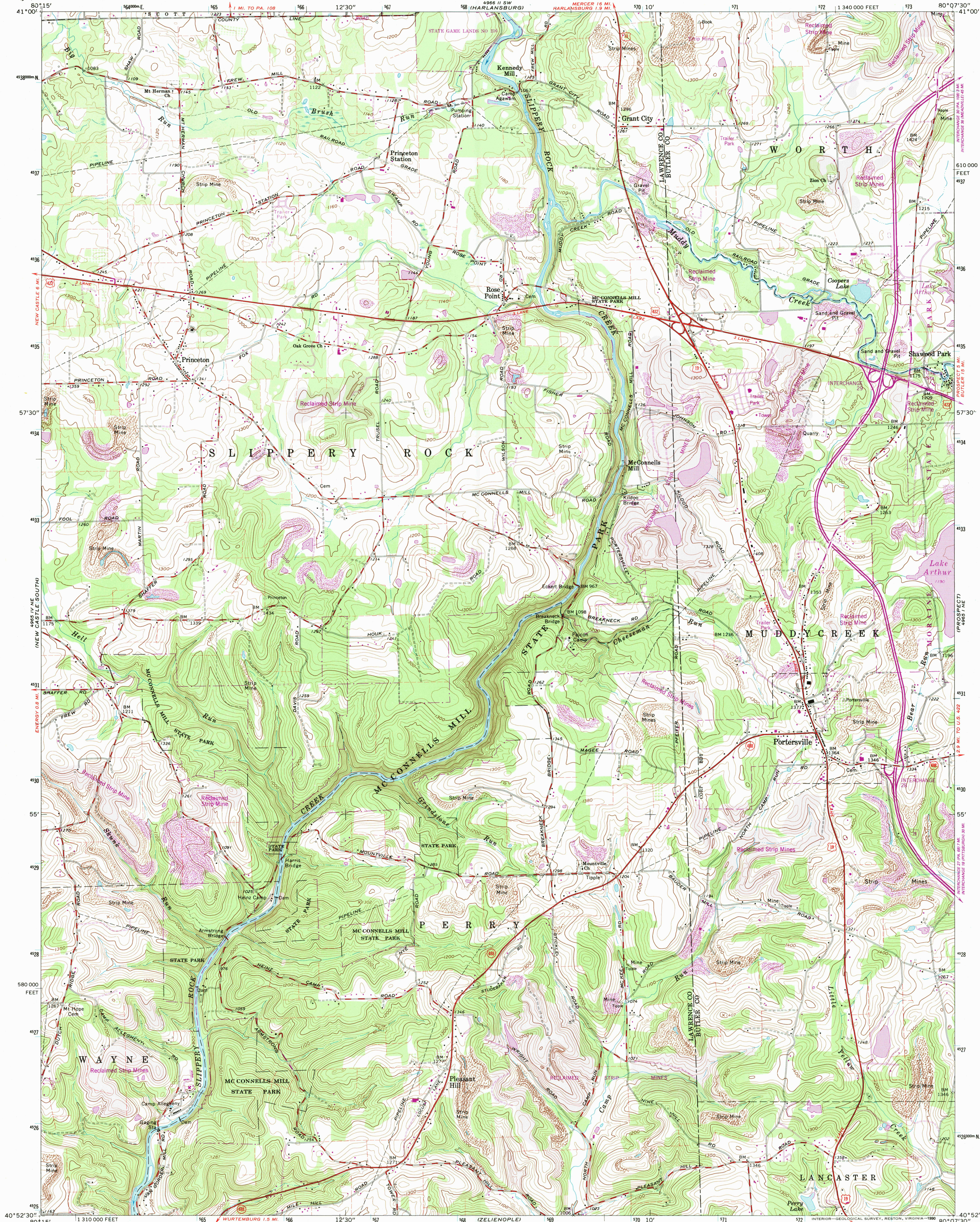


4986 11 SE
(NEW CASTLE NORTH)

UNITED STATES
DEPARTMENT OF THE INTERIOR
GEOLOGICAL SURVEY

PORTERSVILLE QUADRANGLE
PENNSYLVANIA
7.5 MINUTE SERIES (TOPOGRAPHIC)

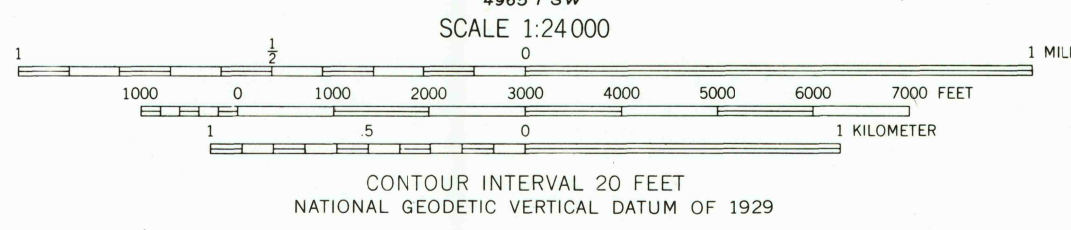
4986 11 SE
(SLIPPERY ROCK)



U.S. GEOLOGICAL SURVEY
FEB 28 1990
REC'D FILE COPY

Mapped, edited, and published by the Geological Survey
Control by USGS and USC&GS
Topography by photogrammetric methods from aerial
photographs taken 1958. Field checked 1961
Polyconic projection. 1927 North American datum
10,000-foot grid based on Pennsylvania coordinate system, south zone
1000-meter Universal Transverse Mercator grid ticks,
zone 17, shown in blue
To place on the predicted North American Datum 1983
move the projection lines 3 meters south
and 18 meters west as shown by dashed corner ticks
Fine red dashed lines indicate selected fence and field lines where
generally visible on aerial photographs. This information is unchecked
There may be private inholdings within the boundaries of
the National or State reservations shown on this map

UTM GRID AND 1990 MAGNETIC NORTH
DECLINATION AT CENTER OF SHEET
Contours in strip mine areas may not
accurately represent present topography



THIS MAP COMPLIES WITH NATIONAL MAP ACCURACY STANDARDS
FOR SALE BY U.S. GEOLOGICAL SURVEY
DENVER, COLORADO 80225 OR RESTON, VIRGINIA 22092
A FOLDER DESCRIBING TOPOGRAPHIC MAPS AND SYMBOLS IS AVAILABLE ON REQUEST

Revisions shown in purple and woodland compiled in cooperation
with Commonwealth of Pennsylvania agencies from aerial photographs
taken 1988 and other sources. This information not field checked
Map edited 1990
Light purple tint indicates reclaimed strip mine areas

ROAD CLASSIFICATION
Heavy-duty ——— Light-duty ———
Medium-duty ——— Unimproved dirt ———
U.S. Route ——— State Route ———
Interstate Route ———

PORTERSVILLE, PA.
40080-H2-TF-024

1961
PHOTOREVISED 1990
DMA 4985 11 NW—SERIES V831

ISBN 0-607-46526-1
9 780607 465261