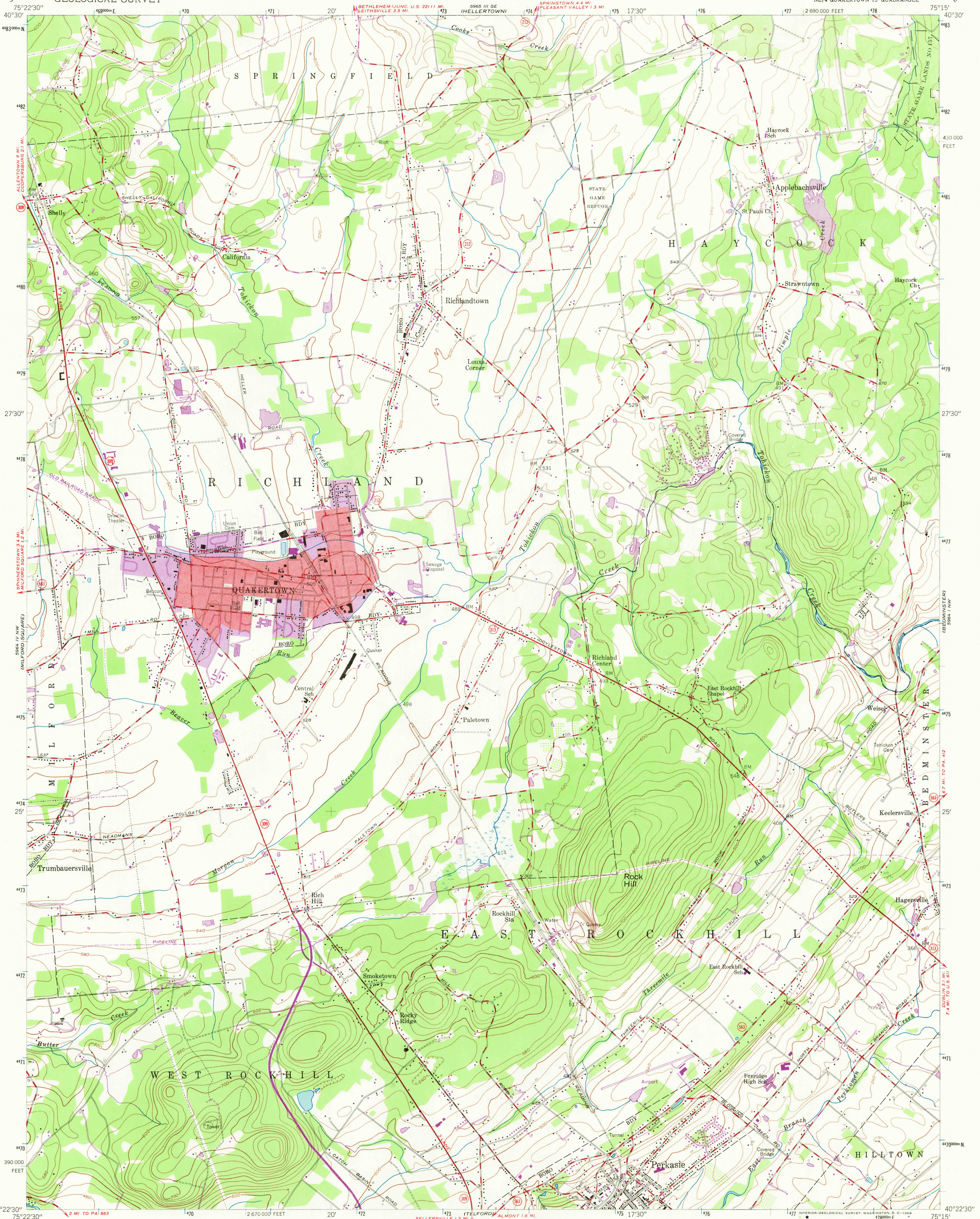


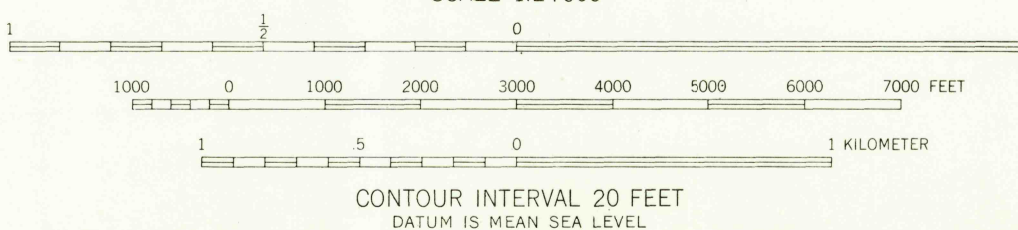
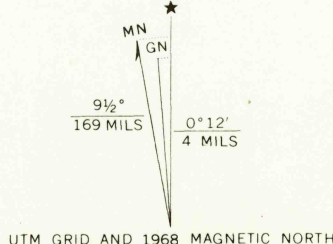
UNITED STATES
DEPARTMENT OF THE INTERIOR
GEOLOGICAL SURVEY

QUAKERTOWN QUADRANGLE
PENNSYLVANIA—BUCKS CO.
7.5 MINUTE SERIES (TOPOGRAPHIC)
NE/4 QUAKERTOWN 15' QUADRANGLE



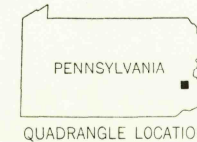
Mapped by the Army Map Service
Edited and published by the Geological Survey
Control by USGS and USC&GS

Topography from aerial photographs by photogrammetric methods. Field check 1943
Culture revised by the Geological Survey 1957
Polyconic projection. 1927 North American datum
10,000-foot grid based on Pennsylvania coordinate system,
south zone
1000-meter Universal Transverse Mercator grid ticks,
zone 18, shown in blue
Red tint indicates area in which only
landmark buildings are shown



THIS MAP COMPLIES WITH NATIONAL MAP ACCURACY STANDARDS
FOR SALE BY U.S. GEOLOGICAL SURVEY, WASHINGTON, D.C. 20242
A FOLDER DESCRIBING TOPOGRAPHIC MAPS AND SYMBOLS IS AVAILABLE ON REQUEST

USGS
HISTORICAL FILE
TOPOGRAPHIC DIVISION



ROAD CLASSIFICATION
Heavy-duty ——— Light-duty ———
Unimproved dirt ———
State Route

FILE COPY
TOPOGRAPHIC DIVISION

QUAKERTOWN, PA.
NE/4 QUAKERTOWN 15' QUADRANGLE
N4022.5—W7515/7.5

Revisions shown in purple compiled by Geological Survey in
cooperation with State of Pennsylvania agencies, from aerial
photographs taken 1968. This information not field checked
Purple tint indicates extension of urban areas

1957
PHOTOGRAPHED 1968
AMS 5964 IV NE—SERIES V-851