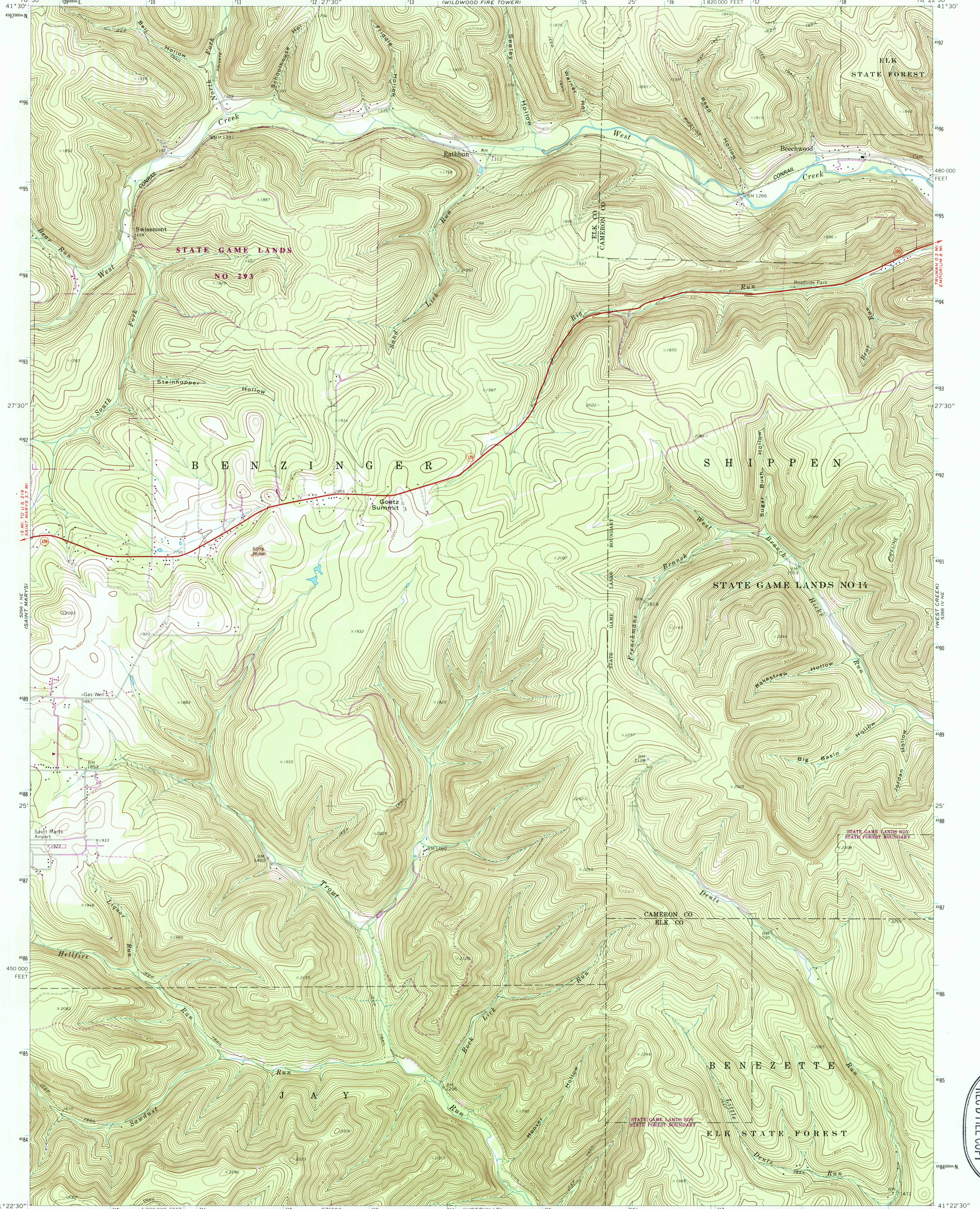


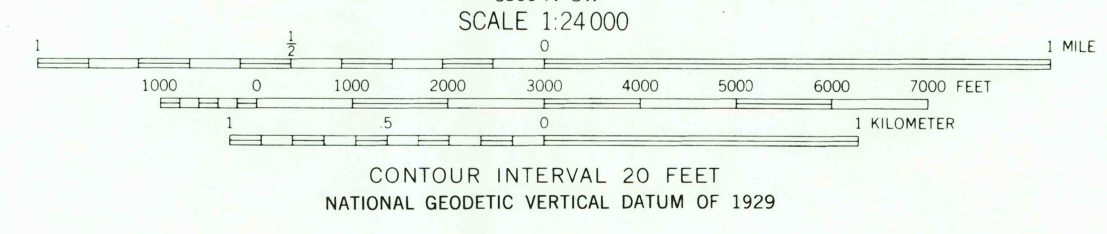
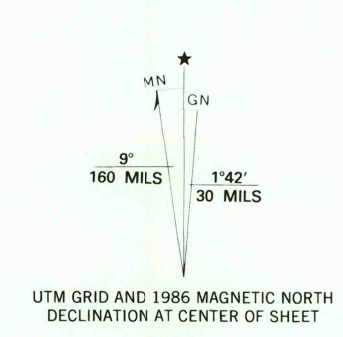


5367 1/4 SW
WILDWOOD FIRE TOWER



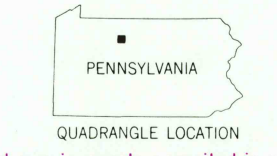
78° 30' 41° 30' 4970000 N
78° 27' 30" 710 711 712 27' 30" 713 714 715 25' 716 1:820 000 FEET 717 718 78° 22' 30" 41° 30' 4970000 N
41° 30' 27' 30" 492
491
490
489
488
25' 487
486
485
484
41° 22' 30" 78° 30' 710 1:800 000 FEET 711 712 27' 30" 713 714 (WEEDVILLE) 5366 1/4 SW 1990000 E 715 25' 716 717 718 41° 22' 30" 78° 22' 30"

Mapped, edited, and published by the Geological Survey
Control by USGS and USC&GS
Topography by photogrammetric methods from aerial photographs taken 1968. Field checked 1969
Polyconic projection. 1927 North American datum
10,000-foot grid based on Pennsylvania coordinate system, north zone
1000-meter Universal Transverse Mercator grid ticks, zone 17, shown in blue
To place on the predicted North American Datum 1983, move the projection lines 3 meters south and 22 meters west as shown by dashed corner ticks
There may be private inholdings within the boundaries of the National or State reservations shown on this map



ROAD CLASSIFICATION

Primary highway, hard surface	Light-duty road, hard or improved surface
Secondary highway, hard surface	Unimproved road
Interstate Route	U. S. Route
	State Route



THIS MAP COMPLIES WITH NATIONAL MAP ACCURACY STANDARDS
FOR SALE BY U. S. GEOLOGICAL SURVEY, RESTON, VIRGINIA 22092
A FOLDER DESCRIBING TOPOGRAPHIC MAPS AND SYMBOLS IS AVAILABLE ON REQUEST

Revisions shown in purple compiled in cooperation with Commonwealth of Pennsylvania agencies from aerial photographs taken 1983 and other sources. This information not field checked. Map edited 1986

RATHBUN, PA.
41078-D4-TF-024
1969
PHOTOREVISED 1986
DMA 5366 1/4 NW-SERIES V831

USGS NAD HISTORICAL MAP
SEP 22 1986
REC'D FILE COPY