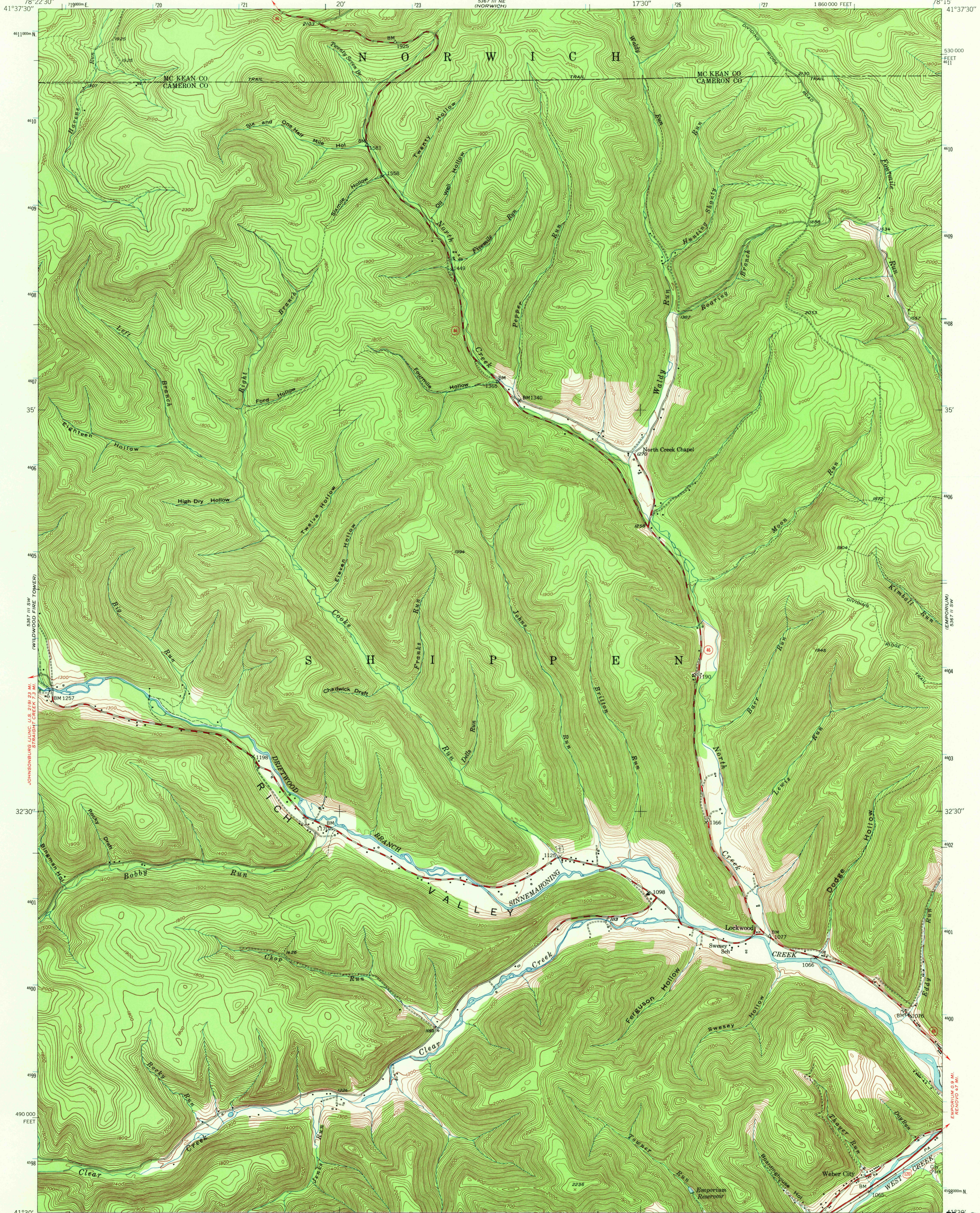
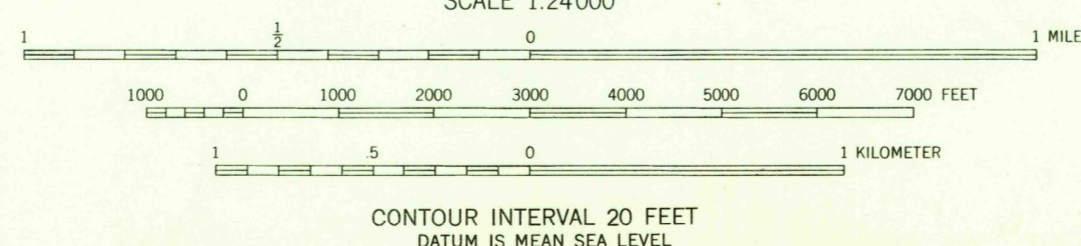
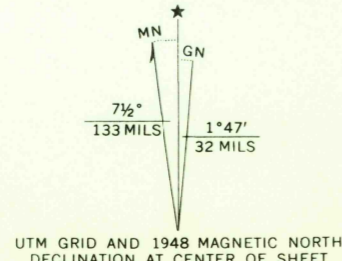


5367 III SW  
(CROSBY)

5367 III NE  
(CROSBY)

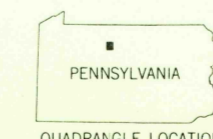


Mapped, edited, and published by the Geological Survey  
Control by USGS, USC&GS, and Pa. Dept. of Highways  
Topography from aerial photographs by multiplex methods  
Aerial photographs taken 1945. Field check 1948  
Polyconic projection. 1927 North American datum  
10,000-foot grid based on Pennsylvania coordinate system,  
north zone  
1000-meter Universal Transverse Mercator grid ticks,  
zone 17, shown in blue



USGS  
HISTORICAL FILE  
TOPOGRAPHIC DIVISION

ROAD CLASSIFICATION  
Heavy-duty — Light-duty  
Medium-duty — Unimproved dirt  
U.S. Route — State Route



RICH VALLEY, PA.  
SE/4 CROSBY 15' QUADRANGLE  
N4130-W7815/7.5

U.S.G.S.  
FILE COPY  
TOPOGRAPHIC DIVISION

THIS MAP COMPLIES WITH NATIONAL MAP ACCURACY STANDARDS  
FOR SALE BY U.S. GEOLOGICAL SURVEY, WASHINGTON, D.C. 20242  
A FOLDER DESCRIBING TOPOGRAPHIC MAPS AND SYMBOLS IS AVAILABLE ON REQUEST

1948

AMS 5367 III SE-SERIES V831

DEC 11 1970

945