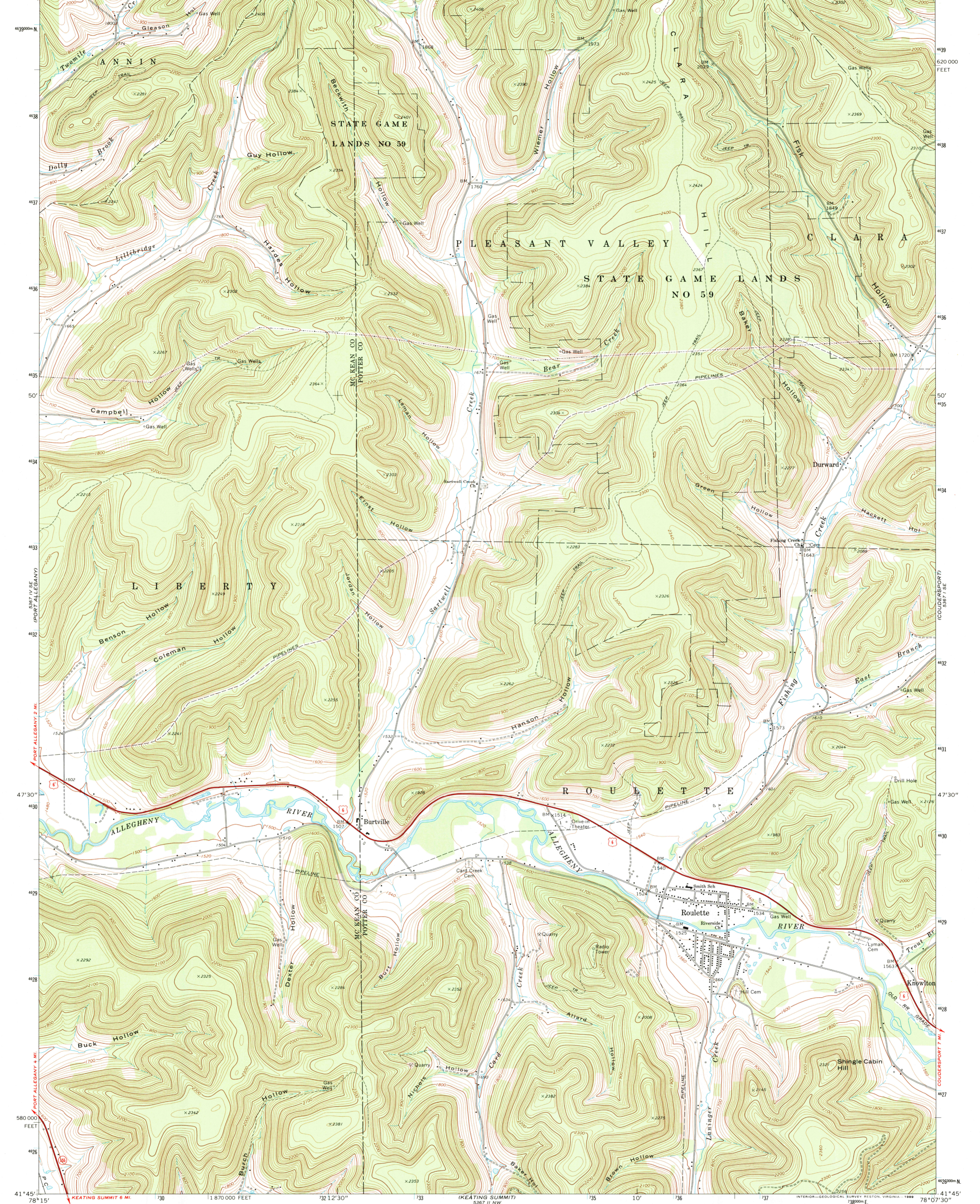
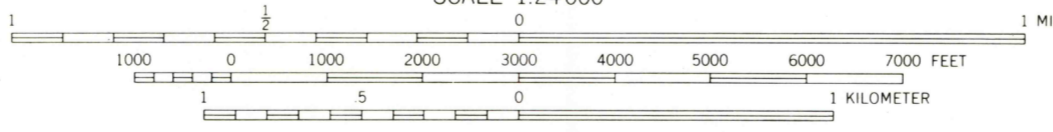
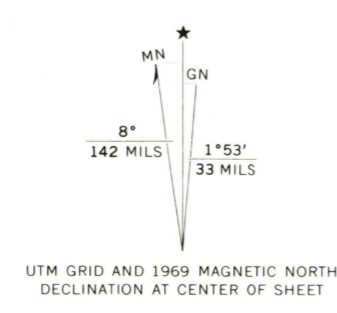


41°52'30" 78°15' 729000 E 730 731 12'30" 732 733 (SHINGLEHOUSE) 734 735 10' 736 1890000 FEET 737 738 78°07'30" 41°52'30"



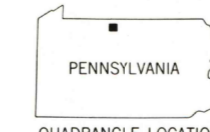
Mapped, edited, and published by the Geological Survey
Control by USGS and USC&GS
Topography by photogrammetric methods from aerial
photographs taken 1969. Field checked 1969.
Polyconic projection. 1927 North American Datum
10,000-foot grid based on Pennsylvania coordinate system,
north zone
1000-meter Universal Transverse Mercator grid ticks,
zone 17, shown in blue
To place on the predicted North American Datum 1983
move the projection lines 3 meters south and
22 meters west as shown by dashed corner ticks
There may be private inholdings within the boundaries of
the National or State reservations shown on this map



CONTOUR INTERVAL 20 FEET
NATIONAL GEODETIC VERTICAL DATUM OF 1988



THIS MAP COMPLIES WITH NATIONAL MAP ACCURACY STANDARDS
FOR SALE BY U.S. GEOLOGICAL SURVEY
DENVER, COLORADO 80225, OR RESTON, VIRGINIA 20192
A FOLDER DESCRIBING TOPOGRAPHIC MAPS AND SYMBOLS IS AVAILABLE ON REQUEST



Map photosinspected 1977 and 1983
No major culture or drainage changes observed

ROAD CLASSIFICATION

Primary highway, hard surface	Light-duty road, hard or improved surface
Secondary highway, hard surface	Unimproved road
Interstate Route	U. S. Route
	State Route

ROULETTE, PA.
SW/4 COUDERSPORT 15' QUADRANGLE
41078 G2-TF-024
1969
PHOTOINSPECTED 1977 AND 1983
DMA 5367 1 SW-SERIES V831

