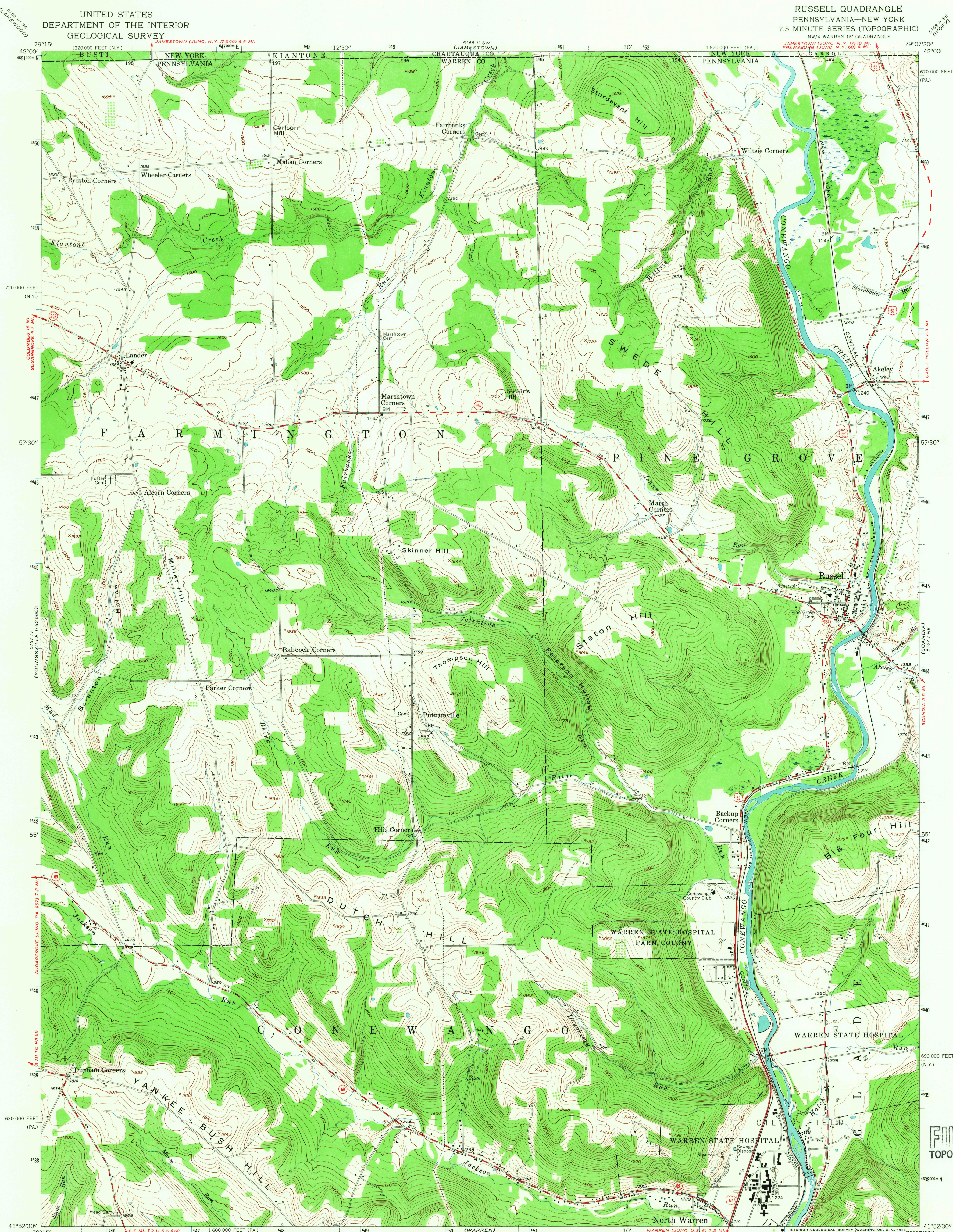


UNITED STATES
DEPARTMENT OF THE INTERIOR
GEOLOGICAL SURVEY

RUSSELL QUADRANGLE
PENNSYLVANIA-NEW YORK
7.5 MINUTE SERIES (TOPOGRAPHIC)
NW/4 WARREN 15' QUADRANGLE



Mapped, edited, and published by the Geological Survey

Control by USGS and USC&GS

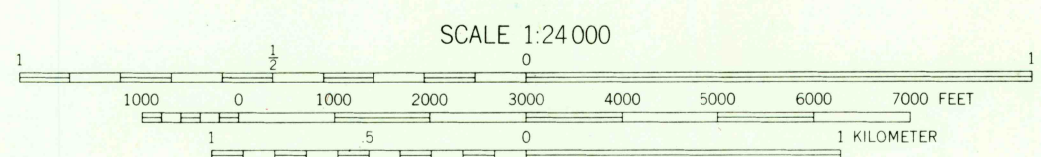
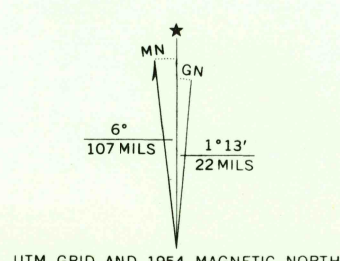
Topography from aerial photographs by photogrammetric methods. Aerial photographs taken 1953. Field check 1954

Polyconic projection. 1927 North American datum

10,000-foot grids based on Pennsylvania coordinate system, north zone, and New York coordinate system, west zone

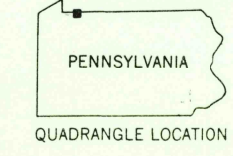
Unchecked elevations are shown in brown

1000-meter Universal Transverse Mercator grid ticks, zone 17, shown in blue



CONTOUR INTERVAL 20 FEET
DATUM IS MEAN SEA LEVEL

USGS
HISTORICAL FILE
TOPOGRAPHIC DIVISION



ROAD CLASSIFICATION
Heavy-duty ——— Light-duty ———
Medium-duty ——— Unimproved dirt ———
U.S. Route ——— State Route ———

RUSSELL, PA.—N. Y.
NW/4 WARREN 15' QUADRANGLE
N 4152.5—W 7907.5/7.5

1954

AMS 5167.1 NW—SERIES V831

THIS MAP COMPLIES WITH NATIONAL MAP ACCURACY STANDARDS
FOR SALE BY U.S. GEOLOGICAL SURVEY, WASHINGTON, D. C. 20242
A FOLDER DESCRIBING TOPOGRAPHIC MAPS AND SYMBOLS IS AVAILABLE ON REQUEST

U.S.G.S.
FILE COPY
TOPOGRAPHIC DIVISION

2430