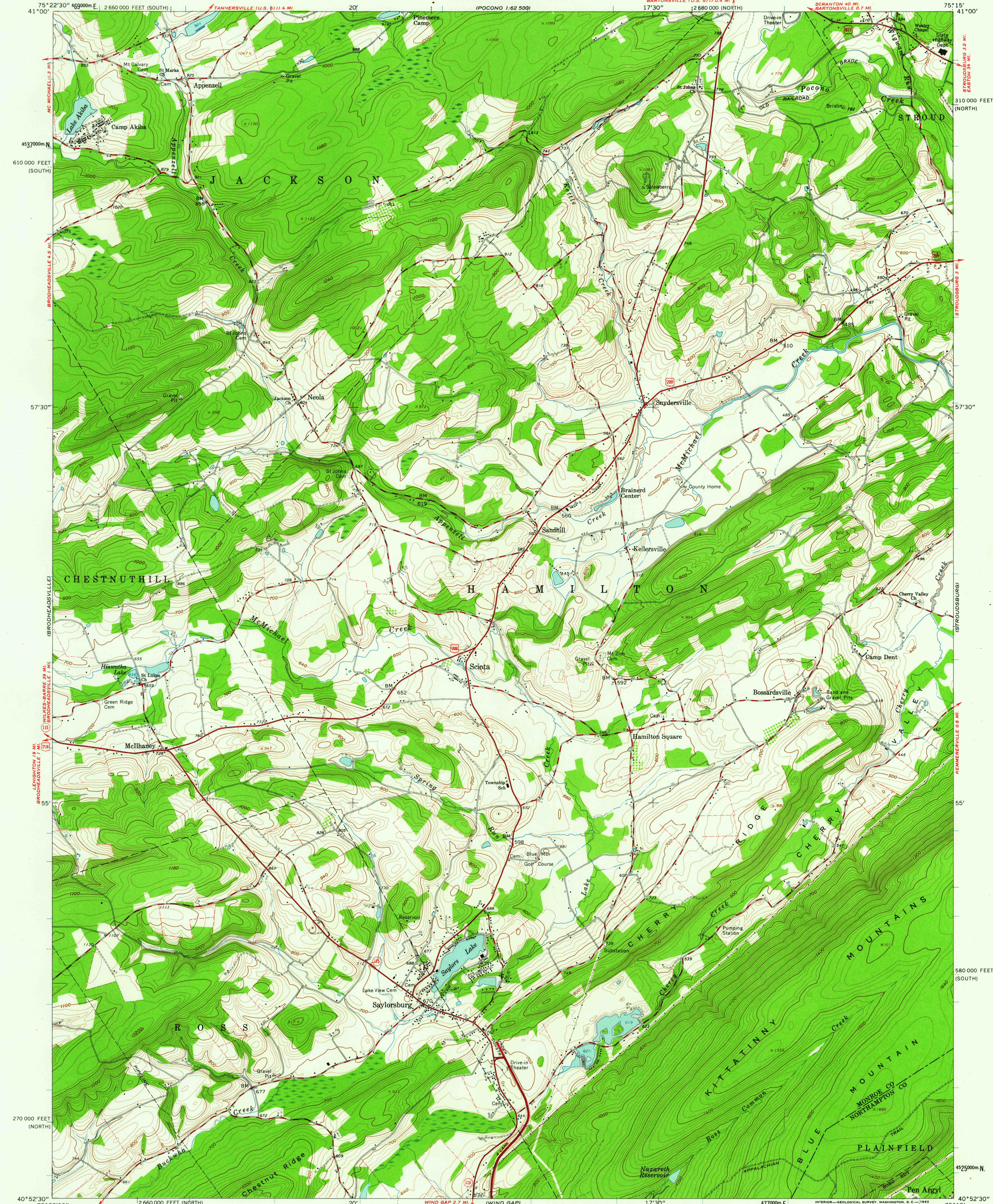


UNITED STATES
DEPARTMENT OF THE INTERIOR
GEOLOGICAL SURVEY

STATE OF PENNSYLVANIA
DEPARTMENT OF INTERNAL AFFAIRS
TOPOGRAPHIC AND GEOLOGIC SURVEY

SAYLORSBURG QUADRANGLE
PENNSYLVANIA
7.5 MINUTE SERIES (TOPOGRAPHIC)
NE 1/4 WIND GAP 15' QUADRANGLE

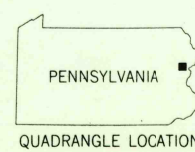


Mapped, edited, and published by the Geological Survey
Control by USGS and USC&GS
Topography by photogrammetric methods from aerial photographs
taken 1951. Field checked 1960
Polyconic projection, 1927 North American datum
10,000-foot grids based on Pennsylvania coordinate system,
north and south zones
1000-meter Universal Transverse Mercator grid ticks,
zone 18, shown in blue
Fine red dashed lines indicate selected fence and field lines where
generally visible on aerial photographs. This information is unchecked

APPROXIMATE MEAN
DECLINATION, 1960

SCALE 1:24,000
1 0 1000 2000 3000 4000 5000 6000 7000 FEET
0 5 10 KILOMETER
CONTOUR INTERVAL 20 FEET
DATUM IS MEAN SEA LEVEL

USGS
HISTORICAL FILE
TOPOGRAPHIC DIVISION



ROAD CLASSIFICATION
Heavy-duty ——— Light-duty ———
Medium-duty ——— Unimproved dirt ———
U.S. Route ——— State Route ———

SAYLORSBURG, PA.
NE 1/4 WIND GAP 15' QUADRANGLE
N4052.5—W7515.7.5

1960

AUG - 9 1962

AUG - 9 1962

2085