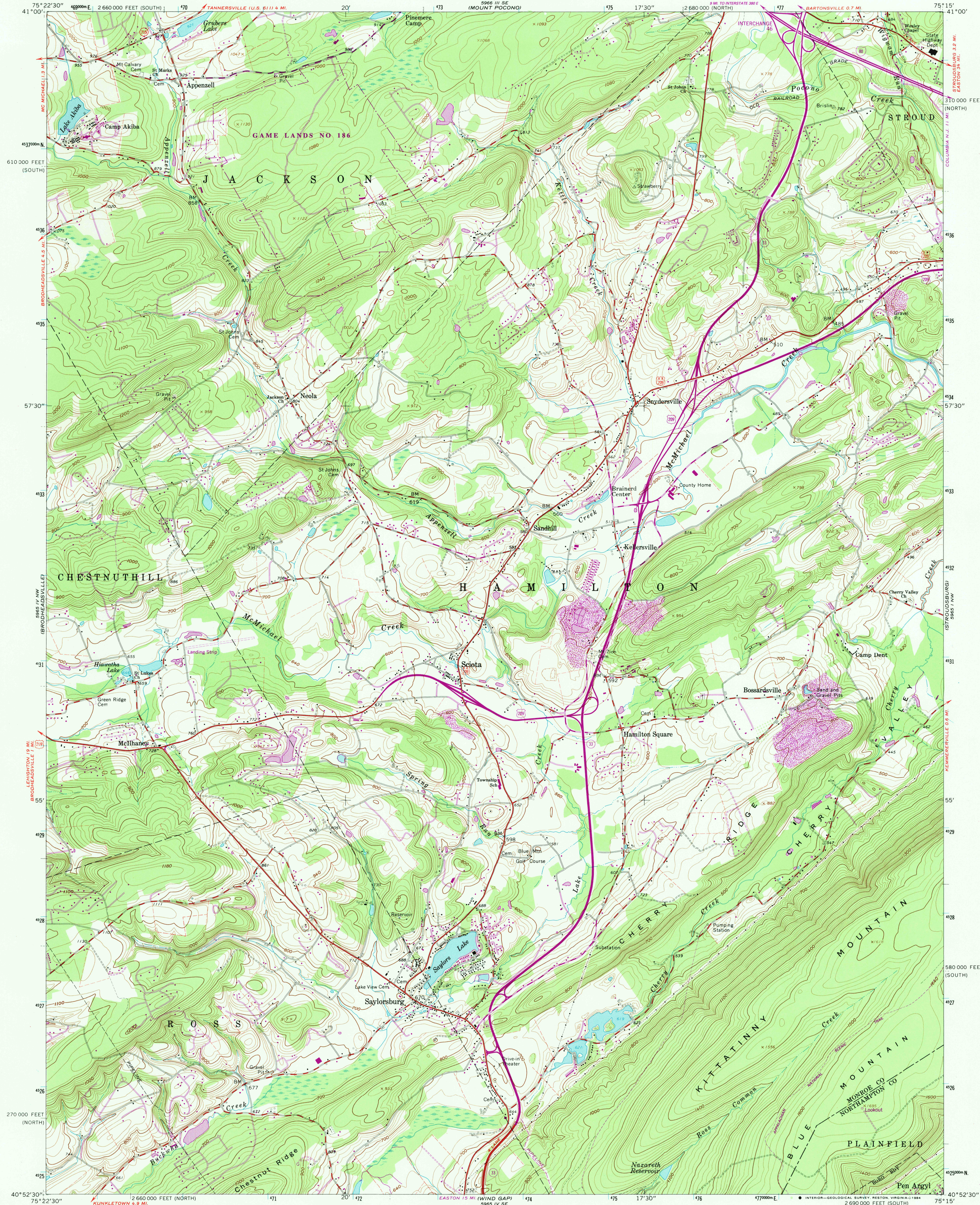


UNITED STATES  
DEPARTMENT OF THE INTERIOR  
GEOLOGICAL SURVEY

STATE OF PENNSYLVANIA  
DEPARTMENT OF INTERNAL AFFAIRS  
TOPOGRAPHIC AND GEOLOGIC SURVEY

SAYLORSBURG QUADRANGLE  
PENNSYLVANIA  
7.5 MINUTE SERIES (TOPOGRAPHIC)



Mapped, edited, and published by the Geological Survey  
Control by USGS and NOS/NOAA

Topography by photogrammetric methods from aerial  
photographs taken 1951. Field checked 1960

Polyconic Projection. 10,000-foot grid ticks based on  
Pennsylvania coordinate system, north and south zones

1000-meter Universal Transverse Mercator grid  
ticks, zone 18, shown in blue

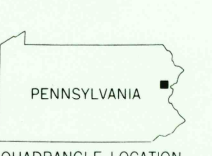
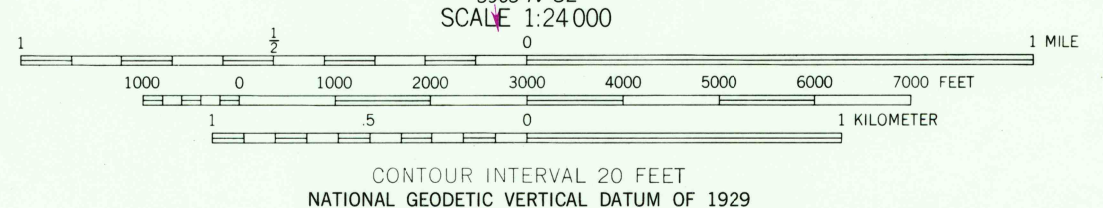
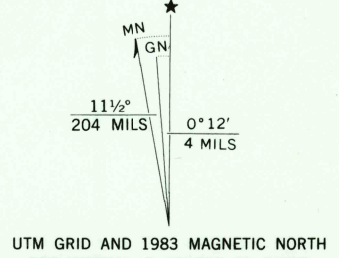
1927 North American Datum  
To place on the predicted North American Datum 1983

move the projection lines 6 meters south and 31 meters  
west as shown by dashed corner ticks

Fine red dashed lines indicate selected fence and field lines where  
generally visible on aerial photographs. This information is unchecked

There may be private inholdings within the boundaries of  
the National or State reservations shown on this map

Revisions shown in purple and woodland compiled in  
cooperation with Commonwealth of Pennsylvania agencies  
from aerial photographs taken 1981 and other sources  
This information not field checked. Map edited 1983



ROAD CLASSIFICATION  
Heavy-duty ——— Light-duty ———  
Medium-duty ——— Unimproved dirt ———  
U.S. Route ——— State Route ———  
Interstate Route ———

SAYLORSBURG, PA.

40075-H3-TF-024

1960  
PHOTOREVISED 1983  
DMA 5965 IV NE—SERIES V831

THIS MAP COMPLIES WITH NATIONAL MAP ACCURACY STANDARDS  
FOR SALE BY U. S. GEOLOGICAL SURVEY, RESTON, VIRGINIA 22092  
A FOLDER DESCRIBING TOPOGRAPHIC MAPS AND SYMBOLS IS AVAILABLE ON REQUEST

RETURN TO:  
USGS AND HISTORICAL MAP ARCHIVES