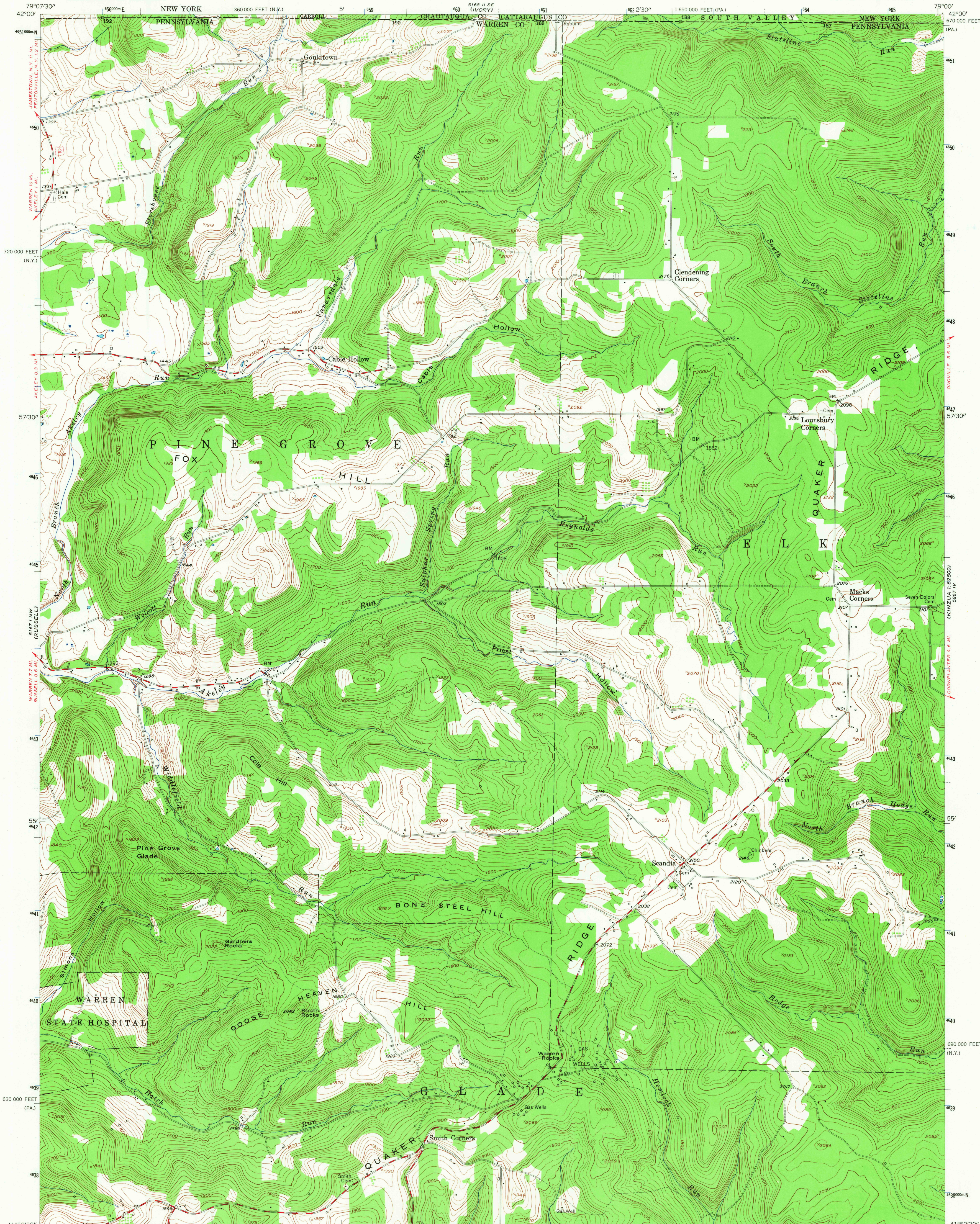
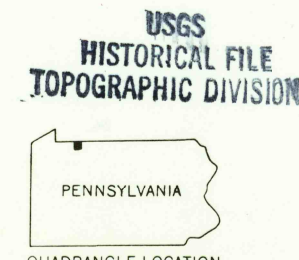
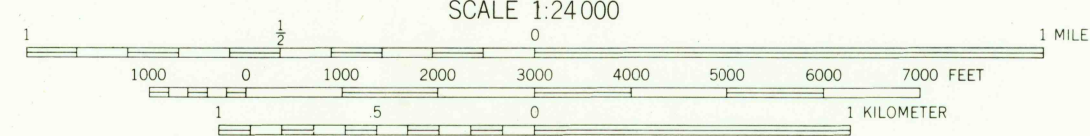
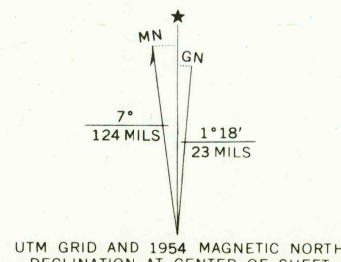


UNITED STATES
DEPARTMENT OF THE INTERIOR
GEOLOGICAL SURVEY

SCANDIA QUADRANGLE
PENNSYLVANIA-NEW YORK
7.5 MINUTE SERIES (TOPOGRAPHIC)
NE/4 WARREN 15' QUADRANGLE



Mapped, edited, and published by the Geological Survey
Control by USGS and USC&GS
Topography from aerial photographs by multiplex methods
Aerial photographs taken 1953. Field check 1954
Polyconic projection. 1927 North American datum
10,000-foot grids based on Pennsylvania coordinate system,
north zone, and New York coordinate system, west zone
Unlabelled wells are oil wells
Unchecked elevations are shown in brown
1000-meter Universal Transverse Mercator grid ticks,
zone 17, shown in blue



ROAD CLASSIFICATION	
Heavy-duty	Light-duty
Medium-duty	Unimproved dirt
U. S. Route	State Route

SCANDIA, PA.-N. Y.
NE/4 WARREN 15' QUADRANGLE
N4152.5-W7900/7.5
1954
AMS 5167 1 NE-SERIES V831

THIS MAP COMPLIES WITH NATIONAL MAP ACCURACY STANDARDS
FOR SALE BY U. S. GEOLOGICAL SURVEY, WASHINGTON, D. C. 20242
A FOLDER DESCRIBING TOPOGRAPHIC MAPS AND SYMBOLS IS AVAILABLE ON REQUEST