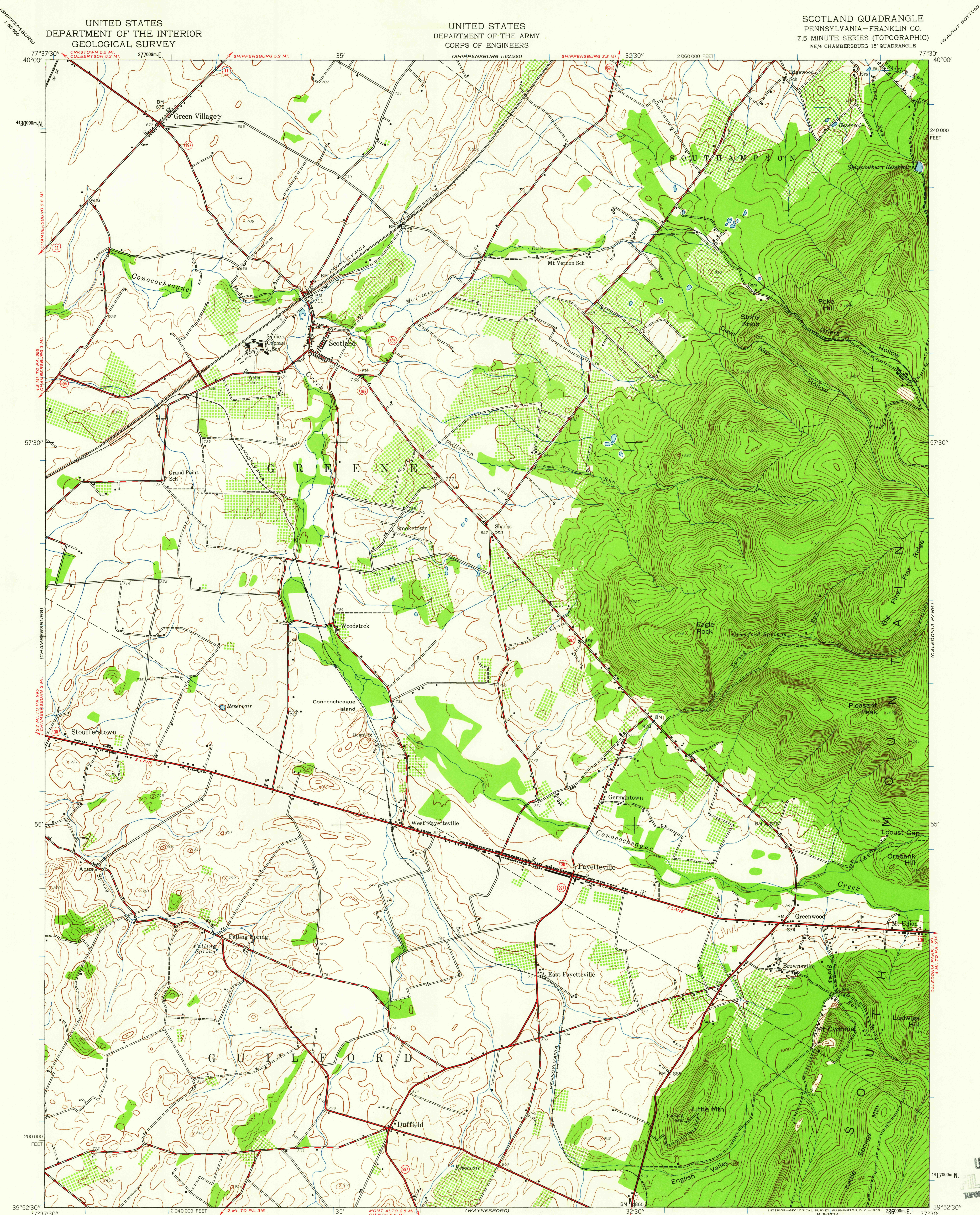
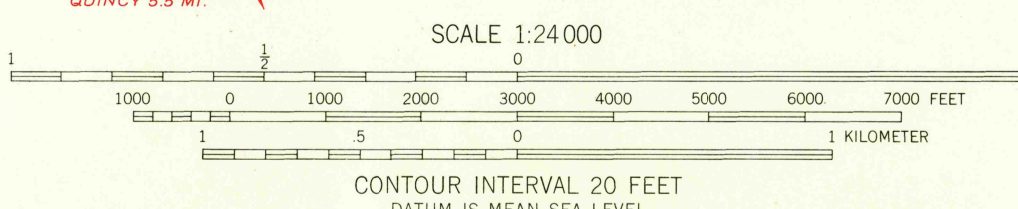


(WALNUT BOTTOM)



Mapped by the Army Map Service  
Published for civil use by the Geological Survey  
Control by USGS, USC&GS, and USFS  
Topography from aerial photographs by photogrammetric methods  
Aerial photographs taken 1943. Field check 1944  
Polyconic projection. 1927 North American datum  
10,000-foot grid based on Pennsylvania coordinate system, south zone  
1000-meter Universal Transverse Mercator grid ticks,  
zone 18, shown in blue

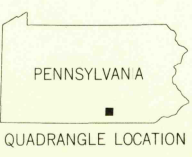
TRUE NORTH  
MAGNETIC NORTH  
APPROXIMATE MEAN  
DECLINATION, 1944



THIS MAP COMPLIES WITH NATIONAL MAP ACCURACY STANDARDS  
FOR SALE BY U. S. GEOLOGICAL SURVEY, WASHINGTON 25, D. C.  
A FOLDER DESCRIBING TOPOGRAPHIC MAPS AND SYMBOLS IS AVAILABLE ON REQUEST

USGS  
HISTORICAL FILE  
TOPOGRAPHIC DIVISION

ROAD CLASSIFICATION  
Heavy-duty ——— Light-duty ———  
Medium-duty ——— Unimproved dirt ———  
U. S. Route ——— State Route ———



SCOTLAND, PA.  
NE/4 CHAMBERSBURG 15' QUADRANGLE  
N3952.5—W7730/7.5

1944

USGS  
FILE COPY  
TOPOGRAPHIC DIVISION

SEP 27 1960

2540