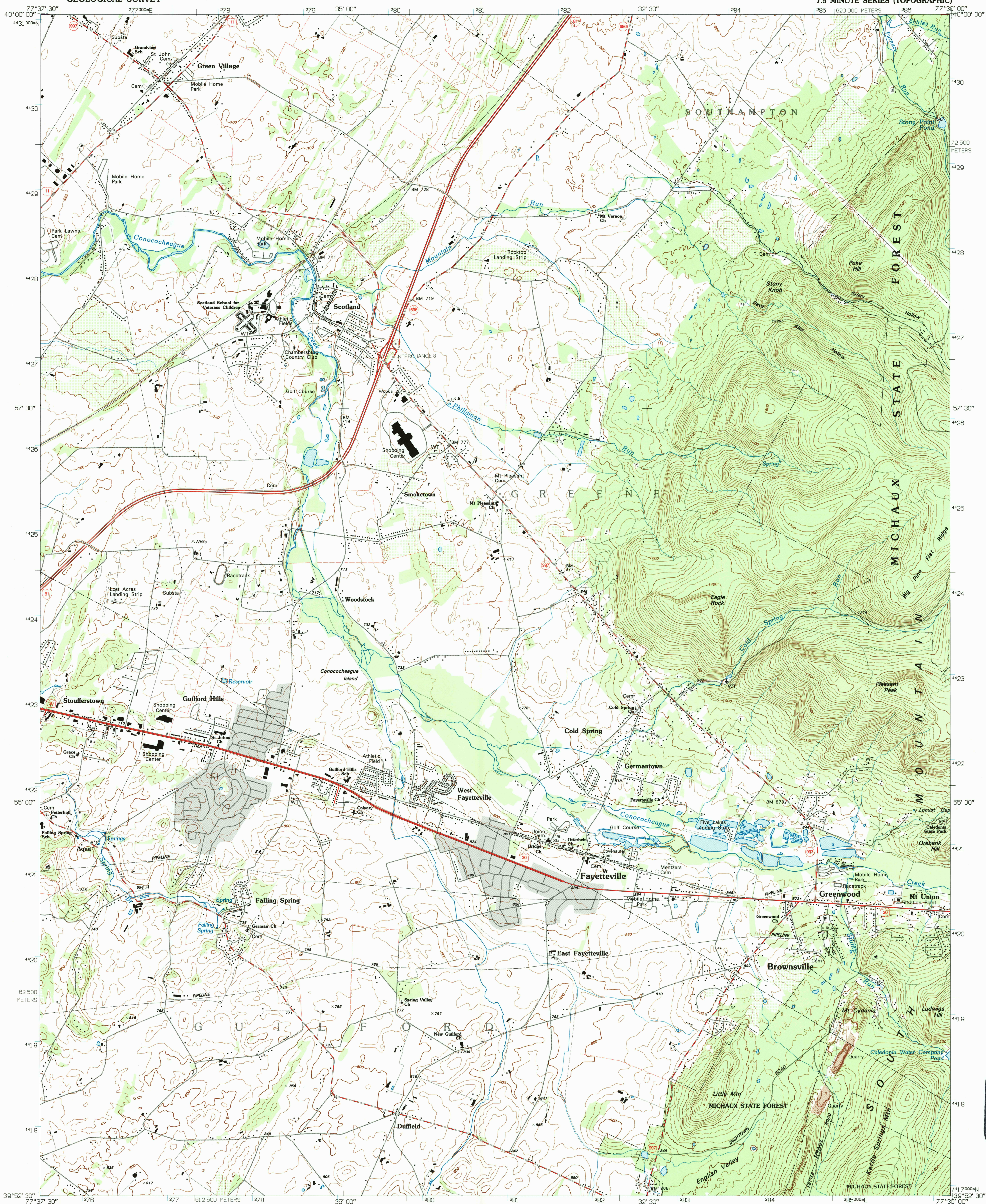
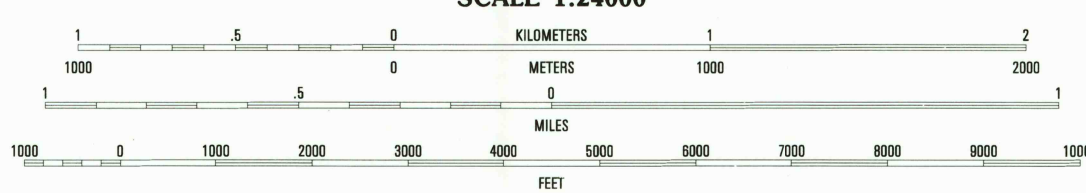
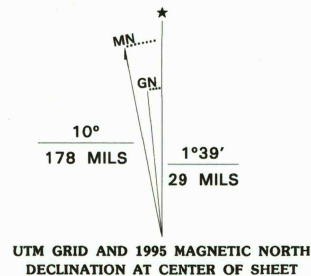


UNITED STATES
DEPARTMENT OF THE INTERIOR
GEOLOGICAL SURVEY

SCOTLAND QUADRANGLE
PENNSYLVANIA-FRANKLIN CO.
7.5 MINUTE SERIES (TOPOGRAPHIC)



Produced by the United States Geological Survey
Compiled from imagery dated 1988-89 and other sources
Field checked 1990. Map edited 1995.
North American Datum of 1983 (NAD 83). Projection and
blue 1000-meter ticks: Universal Transverse Mercator, zone 18
2 500-meter ticks: Pennsylvania Coordinate System of 1983 (south zone)
North American Datum of 1927 (NAD 27) is shown by dashed
corner ticks. The values of the shift between NAD 83 and NAD 27
for 7.5-minute intersections are obtainable from National Geodetic
Survey NADCON software.
There may be private inholdings within the boundaries of
the National or State reservations shown on this map.



QUADRANGLE LOCATION

1	2	3	1 Roxbury
4	5	2 Shippensburg	3 Walnut Bottom
6	7	4 Chambersburg	5 Caledonia Park
		6 Greencastle	7 Waynesboro
		8 Iron Springs	

ADJOINING 7.5' QUADRANGLE NAMES

ROAD CLASSIFICATION
Primary highway
hard surface
Secondary highway
hard surface
Light-duty road, hard or
improved surface
Unimproved road

Interstate Route U.S. Route State Route

SCOTLAND, PA
39077-H5-TF-024

1990

DMA 5463 I NE - SERIES V831

U.S. GEOLOGICAL SURVEY
JUL 14 1995
REC'D FILE COPY

