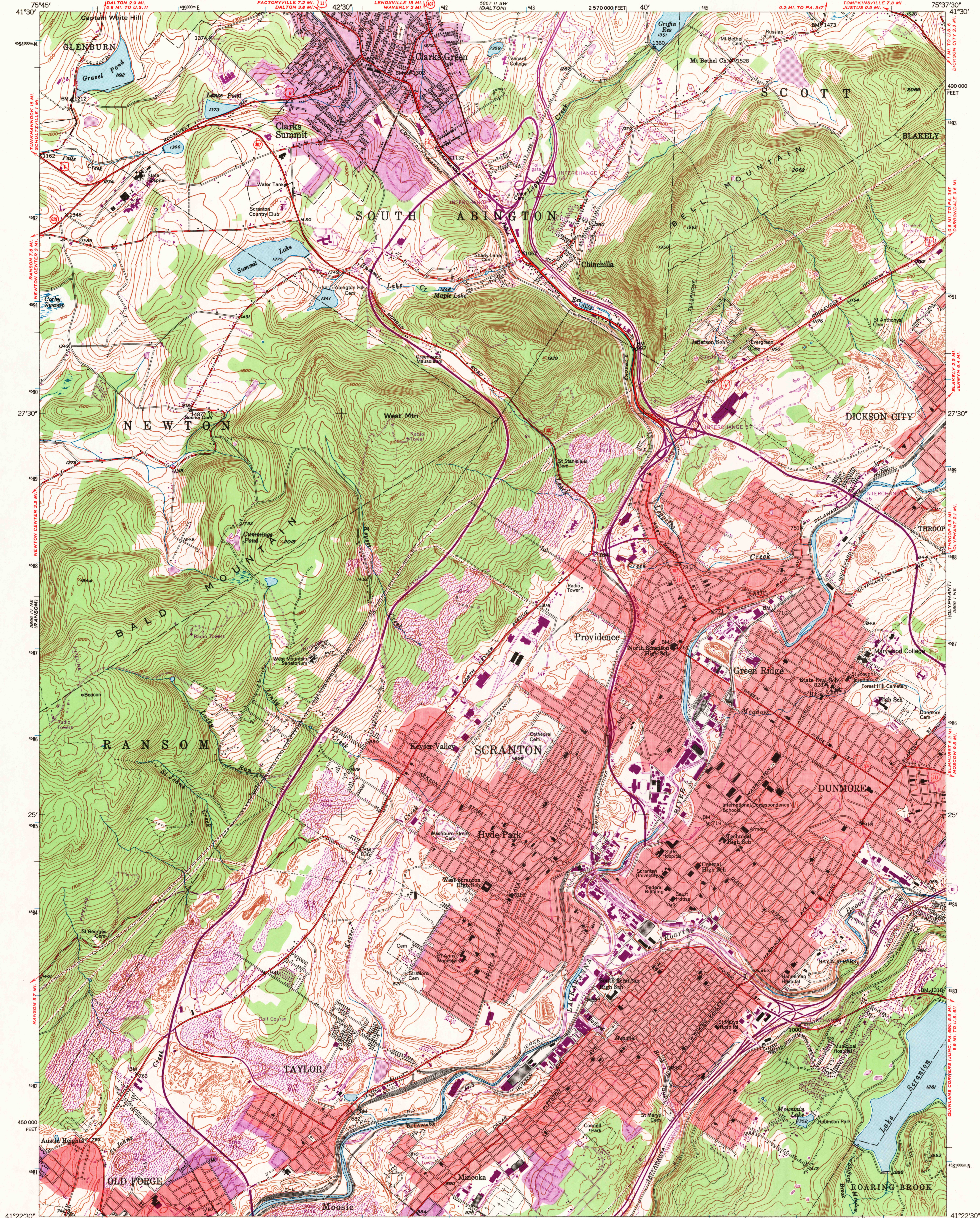
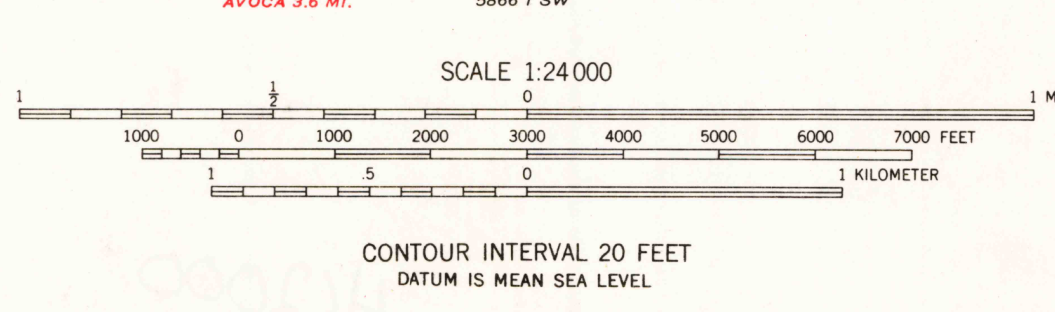
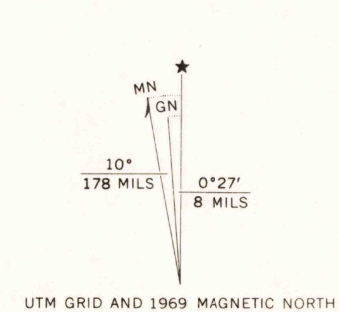


UNITED STATES  
DEPARTMENT OF THE INTERIOR  
GEOLOGICAL SURVEY

SCRANTON QUADRANGLE  
PENNSYLVANIA-LACKAWANNA CO.  
7.5 MINUTE SERIES (TOPOGRAPHIC)

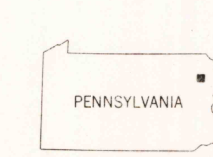


Mapped, edited, and published by the Geological Survey  
Control by USGS and USC&GS  
Topography by photogrammetric methods from aerial photographs  
taken 1942. Field checked 1947  
Polyconic projection. 1927 North American datum  
10,000-foot grid based on Pennsylvania coordinate system, north zone  
1000-meter Universal Transverse Mercator grid ticks, zone 18,  
shown in blue  
Red tint indicates areas in which only landmark buildings are shown  
Revisions shown in purple compiled in cooperation with  
State of Pennsylvania agencies, from aerial photographs taken 1969  
This information not field checked  
Purple tint indicates extension of urban areas



USGS  
HISTORICAL FILE  
TOPOGRAPHIC DIVISION

ROAD CLASSIFICATION  
Heavy-duty ——— Light-duty ———  
Medium-duty ——— Unimproved dirt ———  
Interstate Route U.S. Route State Route



THIS MAP COMPLIES WITH NATIONAL MAP ACCURACY STANDARDS  
FOR SALE BY U.S. GEOLOGICAL SURVEY, WASHINGTON, D.C. 20242  
A FOLDER DESCRIBING TOPOGRAPHIC MAPS AND SYMBOLS IS AVAILABLE ON REQUEST

U.S.G.S.  
FILE COPY  
TOPOGRAPHIC DIVISION

SCRANTON, PA.  
N4122.5-W7537.5/7.5  
1947  
PHOTO-REVISED 1969  
AMS 5866 1 NW-SERIES V831  
FEB 2 1970 3800