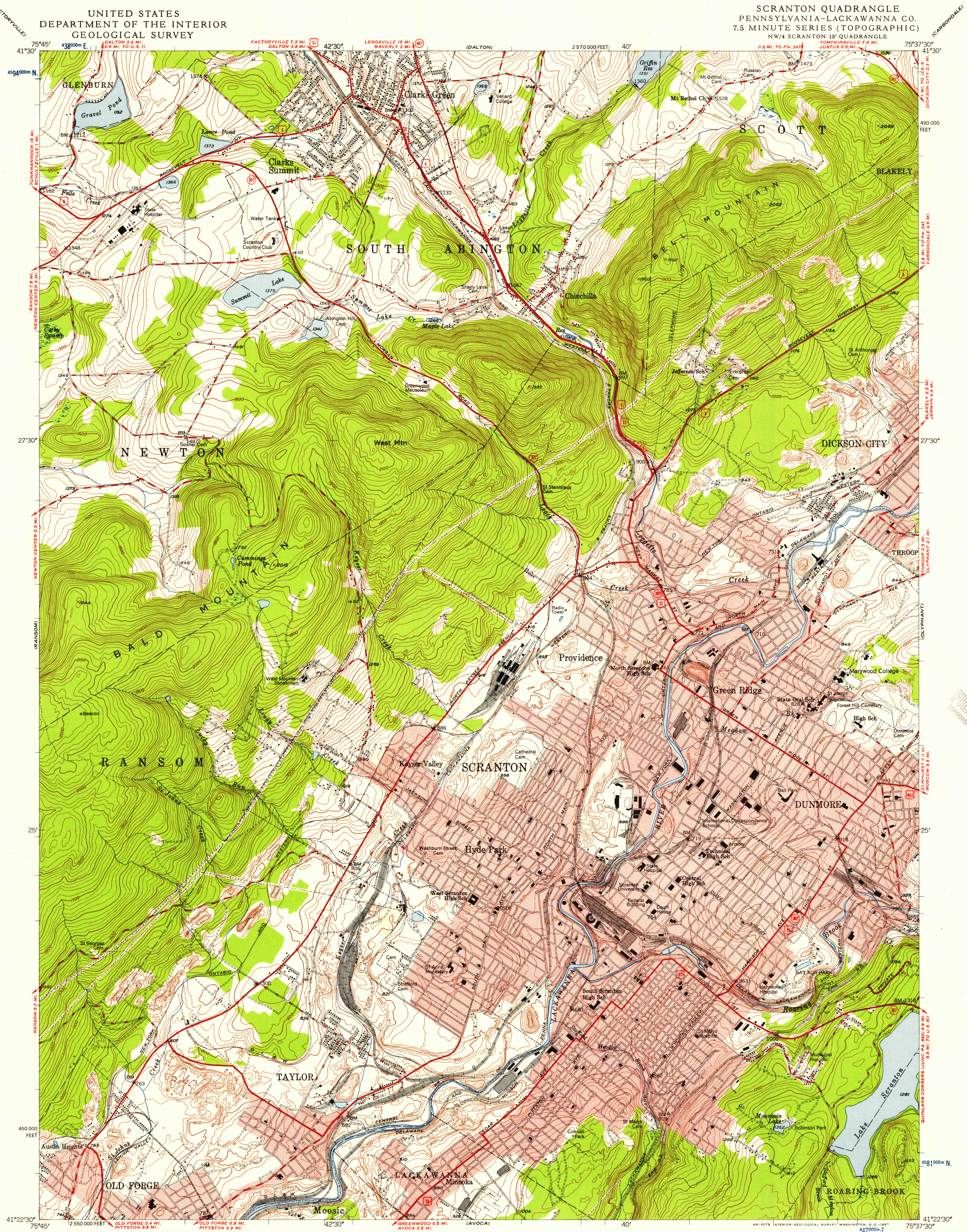


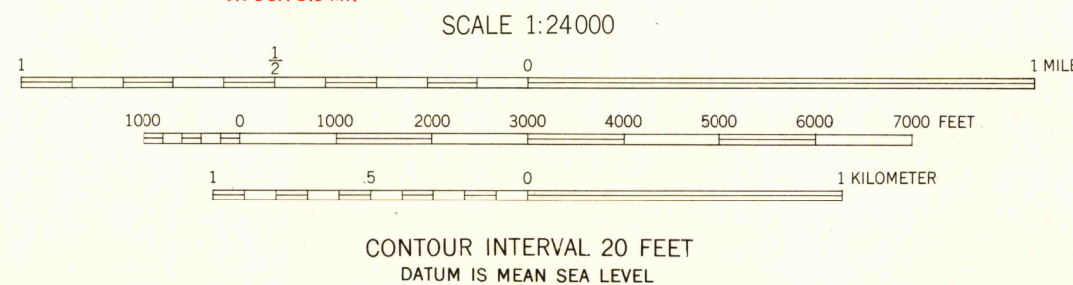
UNITED STATES
DEPARTMENT OF THE INTERIOR
GEOLOGICAL SURVEY

SCRANTON QUADRANGLE
PENNSYLVANIA-LACKAWANNA CO.
7.5 MINUTE SERIES (TOPOGRAPHIC)
NW/4 SCRANTON 15' QUADRANGLE
N41225-W7537.5/7.5



Maped, edited, and published by the Geological Survey
Control by USGS and USC&GS
Topography from aerial photographs by multiplex methods
Aerial photographs taken 1942. Field check 1947
Polyconic projection, 1927 North American datum
10,000-foot grid based on Pennsylvania coordinate system,
north zone
Red tint indicates areas in which only
landmark buildings are shown
Contours in strip mine areas compiled from 1942 photography
1000-meter Universal Transverse Mercator grid ticks,
zone 18, shown in blue

10°
MAGNETIC NORTH
APPROXIMATE MEAN
DECLINATION, 1947



SCALE 1:24000
CONTOUR INTERVAL 20 FEET
DATUM IS MEAN SEA LEVEL

THIS MAP COMPLIES WITH NATIONAL MAP ACCURACY STANDARDS
FOR SALE BY U. S. GEOLOGICAL SURVEY, WASHINGTON 25, D. C.
A FOLDER DESCRIBING TOPOGRAPHIC MAPS AND SYMBOLS IS AVAILABLE ON REQUEST

USGS
HISTORICAL FILE
TOPOGRAPHIC DIVISION

U.S.G.S.
FILE COPY
TOPOGRAPHIC DIVISION

ROAD CLASSIFICATION
HARD-SURFACE ALL WEATHER ROADS
Heavy-duty ——— LANE 16 LANE Improved dirt
Medium-duty ——— LANE 16 LANE Unimproved dirt
Loose-surface, graded, or narrow hard-surface ———
U. S. Route State Route

SCRANTON, PA.
NW/4 SCRANTON 15' QUADRANGLE
N41225-W7537.5/7.5

1947

U.S.G.S.
FILE COPY
TOPOGRAPHIC DIVISION

MAY 3 1957
3710