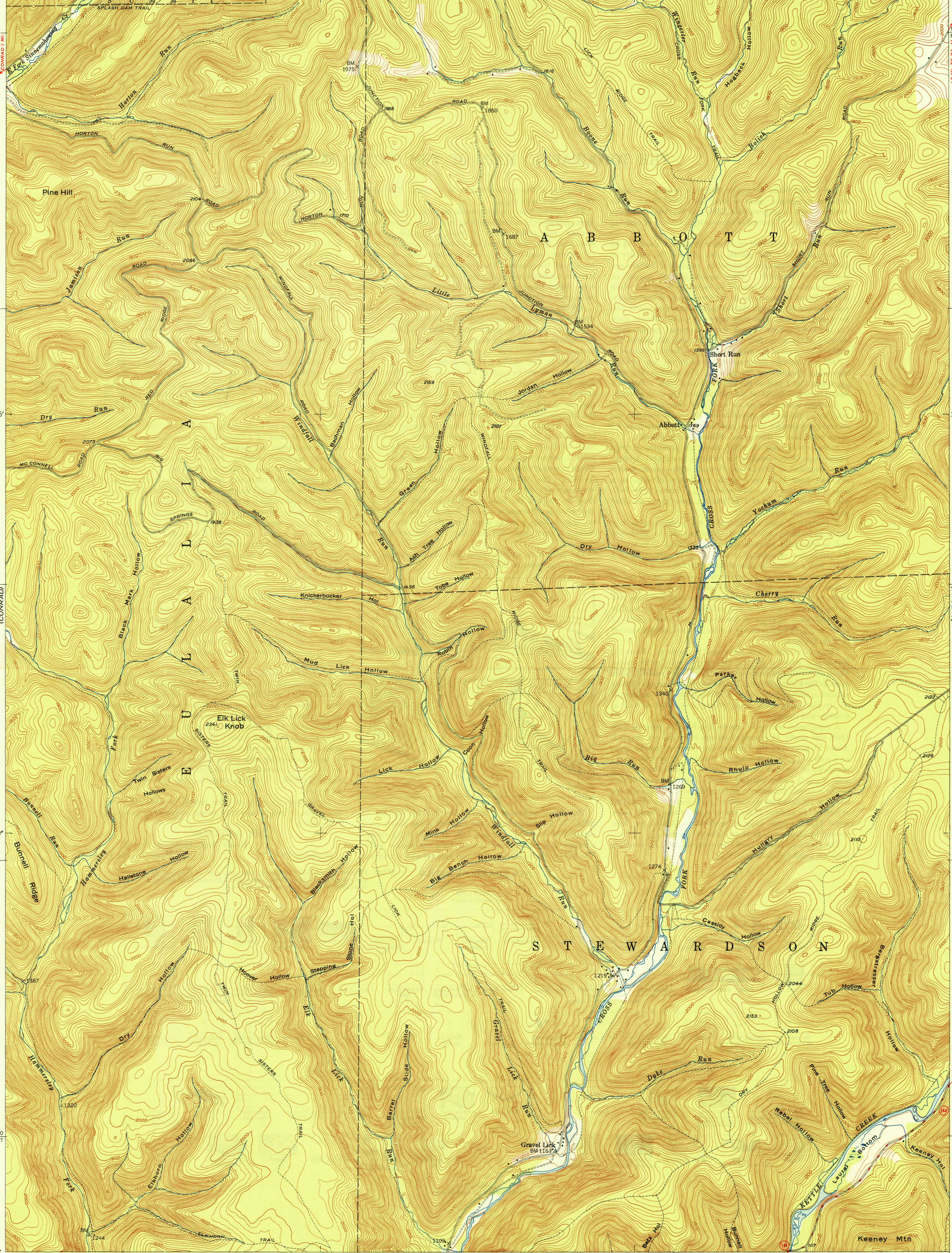


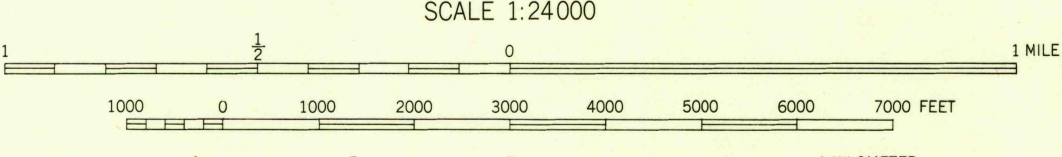
77°52'30" 50' 47'30" 77°45' 41°37'30" 2000000 FEET 41°37'30"



U.S.G.S.
FILE COPY
Inspection and Editing

U.S.G.S.
FILE COPY
Inspection and Editing

Mapped, edited, and published by the Geological Survey
Control by USGS and USC&GS
Topography from aerial photographs by multiplex methods
Aerial photographs taken 1945. Field check 1947
Polyconic projection. 1927 North American datum
10,000-foot grid based on Pennsylvania coordinate system,
north zone.



CONTOUR INTERVAL 20 FEET
DATUM IS MEAN SEA LEVEL

USGS
HISTORICAL FILE
TOPOGRAPHIC DIVISION

ROAD CLASSIFICATION
 HARD-SURFACE ALL WEATHER ROADS DRY WEATHER ROADS
 Heavy-duty, 4 LANE 16 LANE Improved dirt
 Medium-duty, 4 LANE 16 LANE Unimproved dirt
 Loose-surface, graded, or narrow hard-surface
 U. S. Route State Route

SHORT RUN, PA.
N4130-W7745/7.5
EDITION OF 1949

U.S.G.S.
FILE COPY
Inspection and Editing

THIS MAP COMPLIES WITH NATIONAL MAP ACCURACY STANDARDS
FOR SALE BY U. S. GEOLOGICAL SURVEY, WASHINGTON 25, D. C.

JUL 15 1949 3190